

# 2016 Exhibition of School Planning and Architecture

## One Heart Children's Village - Primary School & Children's Home

Category: New Construction

Turbo

Vasin Gisju County, Kenya

# One Heart Children's Village





# One Heart Children's Village



## Students enjoying recreation space

**Community Environment:** The One Heart Children's Village project was conceived by ClarkeHopkinsClarke Partner, Dean Landy, as an initiative to break the cycle of poverty through education. Operated and funded by One Heart Foundation, a not-for-profit organisation who, through fundraising, volunteers and donations aspired to create an educational environment for children living in poverty in Kenya, the project was conceived from the belief that education can improve the lives of disadvantaged children and strengthen communities through providing hope, building key skills and knowledge, and addressing key social issues.





## A community of avid learners

**Community Environment:** The new school was part of an overall masterplan for the village, which also incorporates the homestead and village farm, with the aim of become completely self-sustainable. The school facilities, together with the Children's Village as a whole, provide a holistic environment that supports children with a safe and stable living environment, teaches students how to create an environmentally, financially and socially sustainable way of life, and also provides students with the opportunity to learn in a traditional school setting, giving them hope for a brighter future.



# Destiny House Children's Home

**Learning Environment:** The first stage of the One Heart Children's Village was the primary school and children's housing, which were built to accommodate and educate 71 orphaned and abandoned children and the local community. The school was designed to provide an accessible, high standard education in small class sizes to maximize the children's education.

The design of the learning spaces included careful consideration of the customs and traditions of the local tribes as well as the requirements of the teaching staff, in order to provide teachers with a typically traditional setting to be able to teach comfortably and effectively, and to shape a welcoming environment for students who may be wholly unfamiliar with this type of facility.





## Classes underway

**Learning Environment:** The masterplan incorporates thoughtful positioning of future buildings to ensure unity within the campus whilst offering spaces that can be utilised for different activities by both the school and local community groups. Through the use of an operable wall between two classroom spaces, the school has the opportunity to bring together large groups and offer a multi-purpose room to the community, with a local church group already utilising the space on weekends.

The design also features outdoor story pits which offer alternate learning environments for students and can cater for a full class as well as providing a more intimate space for group work or small discussions. The School provides a supportive learning environment for students as well as a platform for teachers to develop their teaching skills and create new programs for students.



Dean Landy

## Local hand made brick school building

**Physical Environment:** The One Heart School presents modestly within the site, remaining true to its materials. The location and funding greatly impacted on the ability to utilise a variety of materials for this project, but also provided a unique opportunity to incorporate locally made and sourced materials into the design. As it was crucial for this facility to be embraced as a valuable resource by the local community, it was important to create an aesthetic that was familiar and welcoming.





## Typical classroom

**Physical Environment:** Supporting the local community was important during the project with one of the key building materials being a local hand-made brick. The porous nature of the brick resulted in the interior walls being rendered, providing a blank canvas to be covered with student's works of art. Interior spaces are pared back and have been laid out as a typical classroom set up, with the goal to be able to contribute and further develop these spaces in the future as more funds are raised.





## Pathway to the School buildings

**Planning Process:** The project underwent a very unique planning process due to its location and the traditions of the local community with the ClarkeHopkinsClarke team working with various groups within the community as well as consulting with the parents of the Children's Housing and local social worker to determine the needs of children and students.

During the early days of the project, meetings with the tribal village chief and village elders were held to discuss the project and gain approval from them as the success of the project depended on their acceptance.





# Primary School Building

**Planning Process:** The design concept was continually reviewed to ensure the specific needs of the students and local communities were being met. The final design outcomes were greatly influenced by the strict budget and generous donations of goods and services; however our team and project collaborators were committed to ensuring that the tight budget did not compromise the final design outcomes and that the facility would provide the desired high quality education for these increasingly passionate students.



# Floor Plan

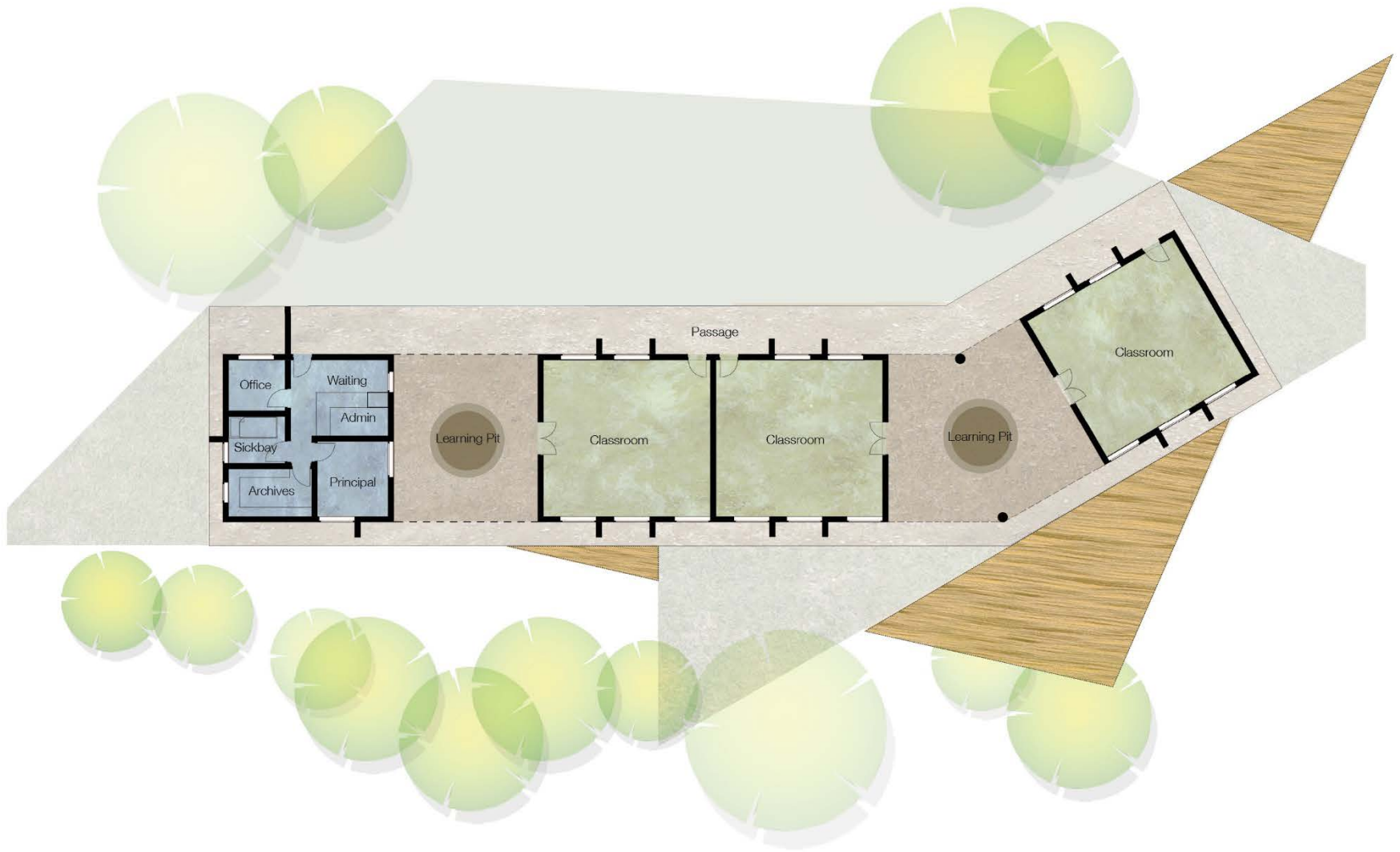
## Children's Home





# Floor Plan

## Primary School



# Exhibition of School Planning and Architecture

## Project Data

Submitting Firm :	Clarke Hopkins Clarke Architects
Project Role	Architect
Project Contact	Dean Landy
Title	Partner
Address	115 Sackville Street
City, State or Province, Country	Collingwood, Victoria, Australia
Phone	+61 3 9419 4340

Construction Firm:	YuYa Builders
Project Role	Builder & Engineer
Project Contact	Ben Koech
Title	Manager
Address	-
City, State or Province, Country	Turbo, Kenya
Phone	+254 721 161 019



# Exhibition of School Planning and Architecture

## Project Details

<b>Project Name</b>	One Heart Children's Village - Primary School & Children's Home
<b>City</b>	Turbo
<b>State</b>	Vasin Gisju County
<b>District Name</b>	Kenya
<b>Supt/President</b>	Ben Koech (School Principal / Manager)
<b>Occupancy Date</b>	January 2015
<b>Grades Housed</b>	Prep – Grade 5
<b>Capacity(Students)</b>	Primary School – 270, Future Secondary School - 400
<b>Site Size (acres)</b>	9.9 acres
<b>Gross Area (sq. ft.)</b>	Primary School: 6460 sq.ft, Children's House: 895 sq.ft
<b>Per Occupant(pupil)</b>	23.9 sq.ft (gross)
<b>Design and Build?</b>	No
<b>If yes, Total Cost:</b>	
<b>Includes:</b>	
<b>If no,</b>	
<b>Site Development:</b>	-
<b>Building Construction:</b>	Primary School AUD\$80,000 Children's House AUD\$40,000
<b>Fixed Equipment:</b>	AUD\$15,000
<b>Other:</b>	-
<b>Total:</b>	AUD\$135,000

# Supporting Images

## Concept View of One Heart Village Site

