

2016 Exhibition of School Planning and Architecture

Leslie Shankman School Corporation, Orthogenic and Hyde Park Day Schools, New Facility

Category: New Construction

Chicago, IL

Leslie Shankman School Corporation, Orthogenic and Hyde Park Day Schools, New Facility



Leslie Shankman School Corporation, Orthogenic and Hyde Park Day Schools, New Facility



Community environment

The Leslie Shankman School Corporation (LSSC) and its parent organization, the University of Chicago Foundation for Emotionally Disturbed Children, are committed to providing educational programs for Chicago-area children with special learning and emotional needs. LSSC has sponsored two schools on the University of Chicago campus: the Sonia Shankman Orthogenic School (O-School), founded in 1915, for bright students with emotional challenges, and the Hyde Park Day School (HPDS), founded in 2000, for bright students with moderate to severe learning disabilities. These schools have guided many young people to productive and satisfying lives.



Community environment

In 2014, LSSC realized a long-considered vision to relocate both schools to a combined, LSSC-owned facility. The new three-story, 75,000 sf building, occupying a 3.2-acre site a few blocks southwest, houses both schools and provides living spaces for 32 O-School residential students and 10 O-School transitional students. The two schools share a gymnasium, an exercise room, multipurpose rooms, and an art studio. The building incorporates an array of sustainable features, including a green roof, a rain garden, plentiful daylighting, and low-emitting and recycled-content materials.

Occupying a C-shaped site, the facility is positioned close to the sidewalk to achieve the Chicago planning department's goal of creating an urban edge along 63rd Street. The L-shaped building is anchored on both ends by the two schools, with shared spaces between. Side street entrances provide privacy and security.



Learning environment

Both schools highly value individuality. Congruent with this philosophy, all spaces — classrooms, residences, dining, and even circulation — are unique in configuration, materials, colors, and furnishings. Learning distractions are minimized through flexible and ample-sized classroom layouts, private reflection areas, daylighting through clerestories to reduce the distraction of outdoor views, and rigorously controlled acoustics. Because safety measures are critical, interiors are designed with three different security levels according to anticipated occupancy and supervision.



Learning environment

Spaces provide specialized support for students' special learning needs.

Help staying on task and avoiding distractions.

- Ability to “talk things out” and work intensively with a teacher one on-one.
- Teacher can see all students.
- Frequently used materials and supplies are easily accessible.
- All students can see whole-class presentations.
- Structured instructional program includes daily routines and expectations, clear rules, and organized, sequential presentation of curriculum.
- Flexibility for different grouping options, including one-on-one, small-group, whole-class, and peer tutoring.



Physical environment

The Leslie Shankman School Corporation envisioned combining their two learning institutions, the Sonia Shankman Orthogenic School (O-School) and Hyde Park Day School (HPDS), into one building to better serve Chicago-area children with behavioral and learning disabilities. Because these students are often hypersensitive to environmental stimuli, creating the right physical surroundings for learning and healing was the client's primary goal.



Physical environment

A key element in the safety strategy was the school's courtyard. Emotionally disturbed children sometimes need to flee when overwhelmed, and the courtyard provides a secure area and safe haven to which students can escape. All exit doors open to the courtyard rather than to the street. Shielded from the busy urban streets by the L-shaped building, the courtyard provides a protected and visible outdoor space for learning and play. As a calm, natural environment, the courtyard functions as the campus's internal compass, inspiring tranquility and reflection in the interior spaces that surround it.



Planning process

The client desired a building which felt more like a home than an institution. Elements of traditional Chicago greystones — tiered horizontal banding, strong space conditioning, bay windows, and protective entryways — inspired the exterior. Soft materials, cozy furnishings, and a bright, uplifting color palette in interior spaces further this goal. Landmark elements meaningful to students, including an iconic yellow door and a mural symbolizing the journey through rehabilitation, were relocated to bridge the old school to the new. Instead of numbers and letters, distinctive colors and other visual cues help students navigate.



Planning process

The new home of the Sonia Shankman Orthogenic School and the Hyde Park Day School is a LEED Gold building designed to nurture students with emotional disturbances and learning disabilities. With diagnoses ranging from attention deficit disorder to autism, bipolar disorder, depression, and schizophrenia, these students are often hypersensitive to environmental stimuli, making the physical environment crucially important in their learning and healing process.

In the new building, daylighting is plentiful. In classrooms and other spaces where avoiding outdoor distractions is a priority, daylight enters through clerestories. To ensure high indoor air quality, large quantities of fresh outdoor air are brought into the building, and materials are free of substances that could offgas and trigger students with chemical sensitivities. Best practices for air quality were followed during construction and prior to occupancy. A rain garden in the school's courtyard further improves outdoor air quality in the urban neighborhood, helps manage stormwater, and supports the school's environmental responsibility curriculum.

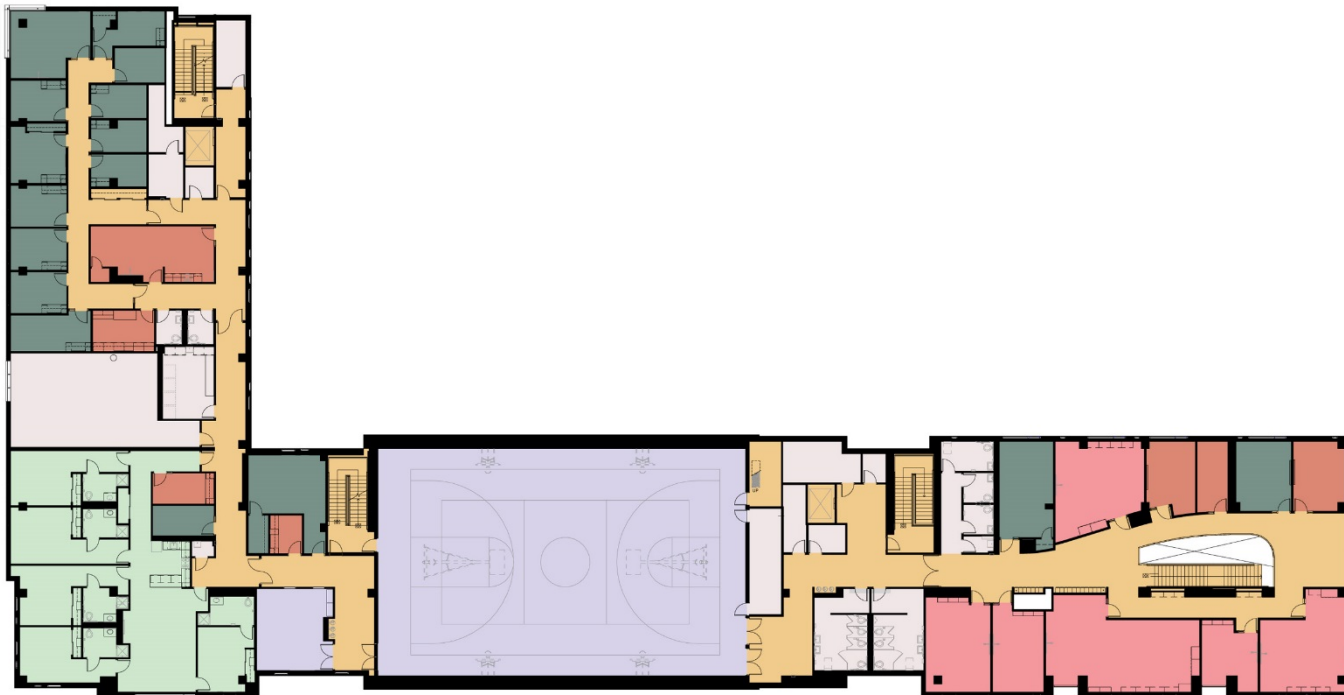


Floor plan: first floor



Floor plan: second floor

- CLASSROOMS
- CORRIDOR
- THERAPY
- RESIDENTIAL
- ADMINISTRATION
- GATHERING
- SUPPORT



Floor plan: third floor

- CLASSROOMS
- CORRIDOR
- THERAPY
- RESIDENTIAL
- ADMINISTRATION
- GATHERING
- SUPPORT



Exhibition of School Planning and Architecture

Project Data

Submitting Firm :	CannonDesign
Project Role	Architect, engineering, interior design, construction administration, commissioning, lighting, design-build
Project Contact	Mary Cavanaugh, AIA, LEED AP
Title	Associate vice president
Address	225 North Michigan Ave., Suite 1100
City, State or Province, Country	Chicago, IL 60601
Phone	312/960-8037
Joint Partner Firm:	
Project Role	
Project Contact	
Title	
Address	
City, State or Province, Country	
Phone	
Other Firm:	Mackie Consultants, LLC
Project Role	Civil, survey, SWPP compliance
Project Contact	Brett McQueen
Title	
Address	9575 West Higgins Road, Suite 500
City, State or Province, Country	Rosemont, IL 60018
Phone	847/696-1400
Construction Firm:	Berglund Construction
Project Role	Contractor
Project Contact	Fred Berglund
Title	President
Address	111 E. Wacker Drive, Suite 2450
City, State or Province, Country	Chicago, IL 60601
Phone	312/726-6624

Exhibition of School Planning and Architecture

Project Details

Project Name	Leslie Shankman School Corporation, Orthogenic and Hyde Park Day Schools, New Facility
City	Chicago
State	Illinois
District Name	n/a
Supt/President	Diana Kon and Pete Myers (Orthogenic school); Walter Crnich (HPDS)
Occupancy Date	March 2014
Grades Housed	Sonia Shankman Orthogenic School — K-12 + beyond; Hyde Park Day School — 2-8
Capacity(Students)	Sonia Shankman Orthogenic School — 72; Hyde Park Day School — 60
Site Size (acres)	3.2 acres
Gross Area (sq. ft.)	75,000 sf
Per Occupant(pupil)	568 sf
gross/net please indicate	
Design and Build?	yes
If yes, Total Cost:	\$24.8 million
Includes:	land, building, landscaping, consultant fees, furniture and equipment
If no,	
Site Development:	
Building Construction:	
Fixed Equipment:	
Other:	
Total:	









