

2016 Exhibition of School Planning and Architecture

# Hawthorne High School

Category : Renovation

Centinela Valley Union High School District

Lawndale, California







## Overview

**Hawthorne High School** is located at the northwest corner of El Segundo Boulevard and Inglewood Avenue and is one of three high school campuses within the Centinela Valley Union High School District. The scope of work for the Phase 1 project includes demolishing existing buildings that were over 50 years old and reorganizing parking areas, natural landscape area, and underground site utilities. The construction of new buildings includes the Student Services and Counseling Center, Media Center, Science Center, and the School of Engineering Academy.



# Community Environment

October 9, 2009  
Transformation Summit

The District-Wide Transformation Summit was conducted on October 9, 2009. It was a passionate gathering that consisted of various stakeholders such as students, parents, school staff, board members, superintendent, cabinet members, neighboring districts, workforce investment board and post secondary institutions representatives.

The Guiding Principles were developed and adopted from the District-Wide Visioning and Transformation Summit. The community selected the following Guiding Principles that were important to them and to their school.

- Communication and collaboration promotes parent and community involvement
- Career-focused programs with small schools
- Student-Centered; High Expectation for All; Personalization
- Innovation Thinking and 21<sup>st</sup> Century Technology

The Educational Model Outcome was established as a result. It was a formation of small learning centers that support career focused programs at all three high schools with each learning center branded with its own identity.



# Community Environment

## Hawthorne Media Center

One of the programming decisions early on was to have a media center that is state of the art facility and also *bookless*. All infrastructure has been designed to accommodate future growth and needs. Tablets and laptops can be checked out at the front. The facility can be accessible by the public after hours and the City has takes pride in having Hawthorne High School's picture represented on the City's official website.

The entire process was collective and determined, and it generated passionate input and support from many citizens of the City of Hawthorne and beyond.





# Community Environment

## Professional Development Spaces

Within the School of Engineering and the Science Center, there is a Professional Development Room that was integral to the discussion at the summit and the vision statement. The Professional Development programs offer courses to the public and the room can be used as a meeting room and for large congregational use.

The Professional Development Room at the School of Engineering has a balcony extended into the Gallery atrium; beyond that are showcased student robotic projects that have garnered the attentions of well known engineering companies in the industry.



# Learning Environment

The School of Engineering consists of (16) core-based classrooms, (3) Academy-based classrooms, (2) Labs (Metal and Wood) and its respective (2) Lecture Rooms.

The identity of the School of Engineering and its physical environment were both designed and infused as a whole. The gear logo represents the School of Engineering, Through meetings and discussions, the gear was transformed from a two dimensional design into a three dimensional courtyard space that allows students to conduct group experiments such as robotics and yet maintain their own unique identity.

***"The identity of the School of Engineering and its physical environment were both designed and infused as a whole"***

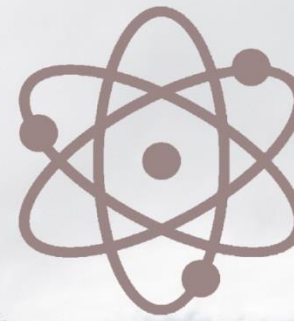


School of Engineering  
Occupancy Group E  
Construction Type IIB  
Floor Area 22,585 SF





# Learning Environment



Science Center  
Occupancy Group E  
Construction Type IIB  
Floor Area 30,817 SF



The Science Center consists of (14) Science Labs and a Professional Development Room that anchors the school at the southeast corner of El Segundo and Inglewood.

The identity of the Science Center resembles the spontaneity of atoms and their energy. The Science courtyard incorporated the atomic concept and combined it with the organic forms and berms from Biology to give the Science Center a courtyard of its own.

The building also has cantilevered balconies that were designed not only as areas of refuge but also serve as platforms for physics drop experiments.

*"The Science courtyard incorporated the atomic concept and combined it with the organic forms and berms from Biology ..."*



# Learning Environment

*"Learning anytime, anywhere"*

Students get to work and learn with their actual environment by using the actual architectural document of this campus in conjunction with various equipment from the shop.



Student sample project working with professional software and tools





# Learning Environment

*"Learning anytime, anywhere"*

Learning anytime, anywhere.

Finished designing on the computer? Take it to the shop!

Done assembling the robot in the shop? Test it outside in the courtyard!





# Learning Environment

*"Enables success and future growth"*

The bookless, wireless Media Center serves the students with tablets and laptops. There are individual meeting kiosks or reserveable study room. The infrastructure is laid out to accommodate future changes or growth.





# Physical Environment

Whether it's indoor joint use computer labs or outdoor study area, the Media Center allows students to be able to learn in various learning environments.

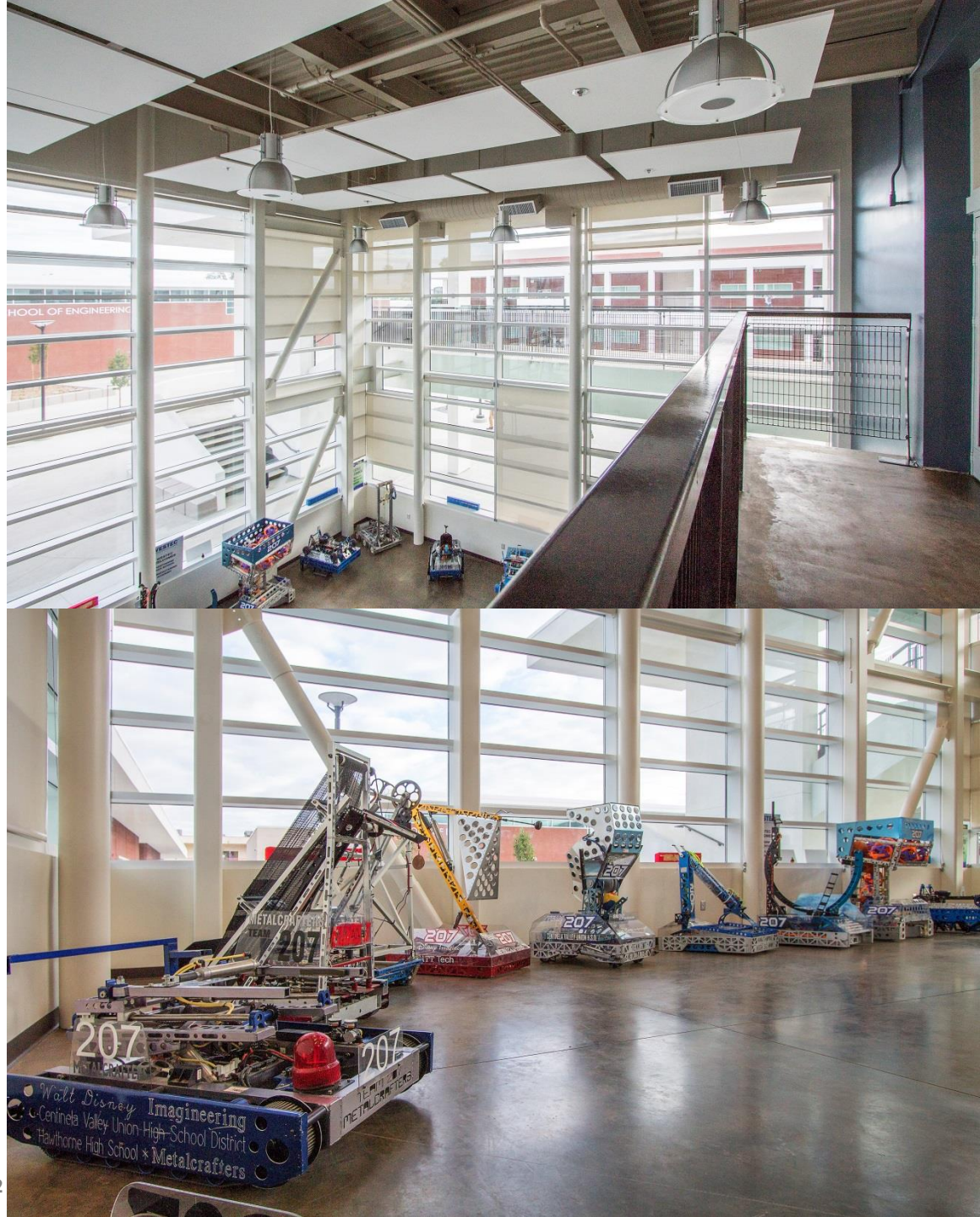




# Physical Environment

The Engineering Gallery is an atrium space that displays students' projects. The space is served by associated restrooms and a Professional Development Room that overlooks into the Gallery.

The idea is that as the program grows in the future, professional companies in the industry would hold seminars or meetings here and would also be able to comment on the students' projects directly from the Professional Development Room.





# Physical Environment



The hands-on experience right outside of your classroom!

Each Engineering Lecture Room is accompanied by associated Shops that house different types of machinery and equipment for the students to get their hands-on experience.

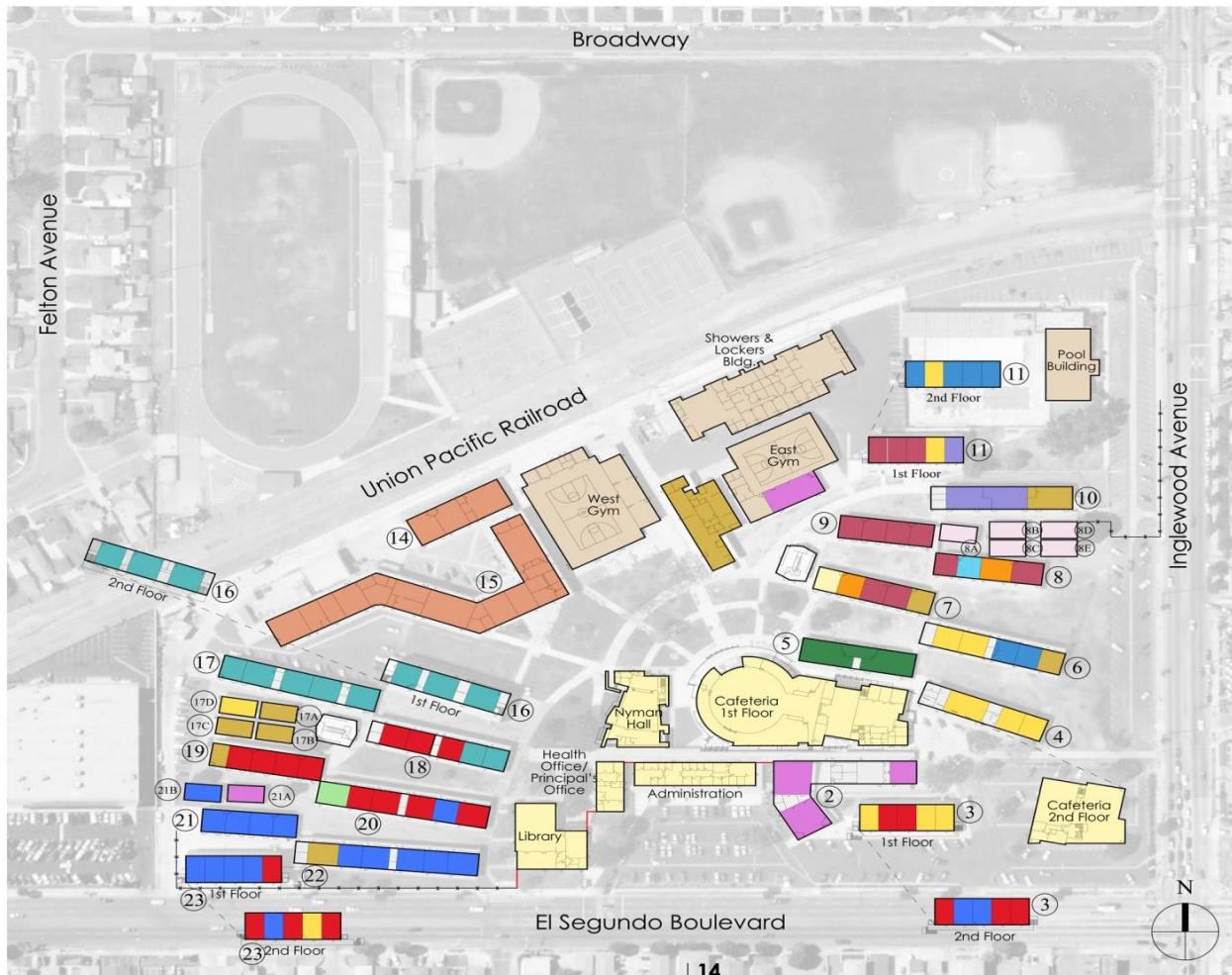




# Planning Process

The Assessment phase began with Three parts to it.

- The first part of our assessment is documenting the organization of the existing teaching spaces so that we can share with the committee. One department may not be aware of how other departments are organized; this shared information is valuable in order to efficiently organize the different areas of the campus
- The Second part our assessment is performing the physical assessment of the existing campus where we analyze the conditions of the existing buildings.
- The Third part of our assessment is observing and reporting the kinds of space deficiency the campus has.



## Legend

### Core Courses

- English / Language Arts
- Math
- Science
- Social Studies
- World Language
- International Business

### Elective Courses

- Art / Digital Art
- Band / Chorus / Dance / Music Appreciation
- Cooking / Sewing
- Credit Recovery
- Yearbook

### Small Learning Environment

- Engineering / ROTC

### Support Programs

- Special Education
- Los Angeles County Offices (LACOE)

### Common Facilities

- Administration / Counseling Health Office / Principal's Office
- Cafeteria • Library • Nyman Hall • Career Center (CC)

### Athletics

- Gymnasiums • Showers and Lockers Bldg. • Pool Bldg.

### Others

- Empty Classroom / Storage / Unoccupied Building

### Existing Teaching Space

Permanent	116
Relocatable	11
Total	127
Students	2146



# Planning Process

*"Hawthorne High School is a diverse, open environment where student input and personal pursuits are honored, trust is evident, and pride permeates all, as reflected in the actions and attitudes of the school community"*



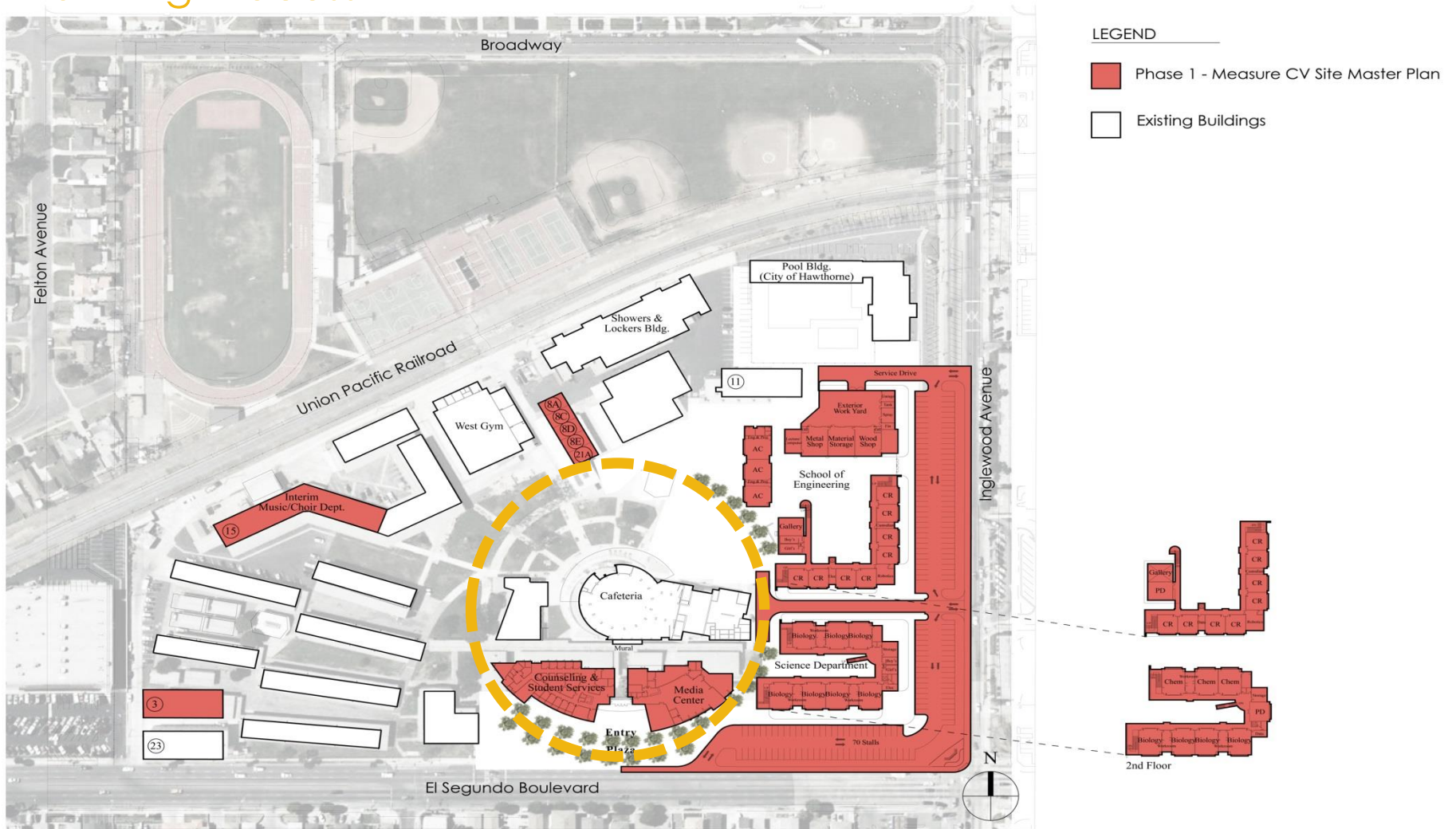
Following the Summit, a Site Master Planning Committee was formed and charged with developing a personalized vision statement specific to Hawthorne High School.

Additionally, the committee established Implementation Strategies that would develop and shape our Master Organizational Plan as well as the individual small learning communities.

With the vision and the bigger picture in mind, we met with various end users through many live charrette exercises to conceptualize the programs within the desired building.



# Planning Process



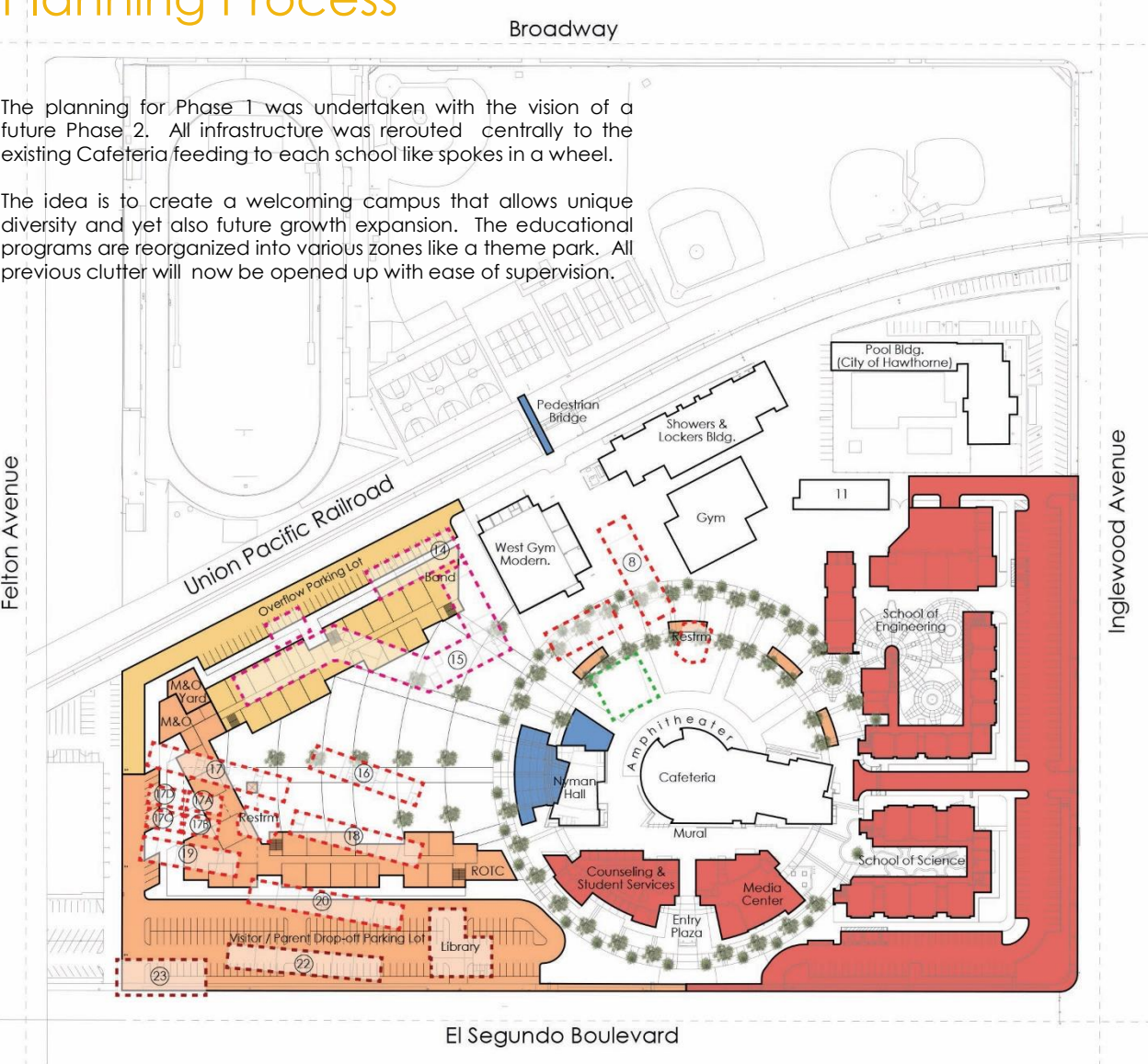
The proposed site is a derived result from the vision statement. The open layout revolves around the existing cafeteria which is the center of the campus. The circulation, structural system, landscaping and visual markers are arranged in a ring radiating from the existing cafeteria. Each school allows personal pursuit with diversity and unique distinction that each school can take pride in.



# Planning Process

The planning for Phase 1 was undertaken with the vision of a future Phase 2. All infrastructure was rerouted centrally to the existing Cafeteria feeding to each school like spokes in a wheel.

The idea is to create a welcoming campus that allows unique diversity and yet also future growth expansion. The educational programs are reorganized into various zones like a theme park. All previous clutter will now be opened up with ease of supervision.



## LEGEND

- Existing Building
- Interim Portables
- Phase 1
- Phase 2A
- Phase 2B
- Phase 2C
- Phase 2A Demo
- Phase 2B Demo
- Phase 2C Demo

Current	Phase 2A Demo	Phase 2A	Phase 2B	Final Projected
75	75	68	37	12
0	+7	7	7	—
35	35	35	35	35
0	0	+31	31	31
0	0	0	+32	32
—	—	—	—	—
0	-7	0	0	—
0	0	-31	0	—
0	0	0	-32	—
110	110	110	110	110
✓	✓	✓	✓	✓

Total Teaching Spaces

# Planning Process

*"To the possible future and beyond . . ."*



1. Future Phase 2B Classroom Wings
2. Future Phase 2A Classroom Wings
3. Future Amphitheater / Courtyard
4. Counseling + Student Services
5. Future Nyman Hall Addition
6. Media Center
7. West Gym
8. Cafeteria
9. East Gym
10. School of Engineering
11. Science Center
12. Pool Building



# Exhibition of School Planning + Architecture Project Data

<b>Submitting Firm :</b>	WLC Architects
<b>Project Role</b>	Architect
<b>Project Contact</b>	Robert J. Hensley
<b>Title</b>	Principal
<b>Address</b>	8163 Rochester Avenue, Suite 100
<b>City, State or Province, Country</b>	Rancho Cucamonga, CA, 91730
<b>Phone</b>	909-987-0909
<b>Joint Partner Firm:</b>	N/A
<b>Project Role</b>	
<b>Project Contact</b>	
<b>Title</b>	
<b>Address</b>	
<b>City, State or Province, Country</b>	
<b>Phone</b>	
<b>Other Firm:</b>	TELACU Construction Management
<b>Project Role</b>	Construction Manager
<b>Project Contact</b>	John Clem
<b>Title</b>	President
<b>Address</b>	604 N. Eckhoff Street
<b>City, State or Province, Country</b>	Orange, CA 92868
<b>Phone</b>	714-541-2390
<b>Construction Firm:</b>	McCarthy Construction
<b>Project Role</b>	Contractor
<b>Project Contact</b>	Andrew Raufi
<b>Title</b>	Project Director
<b>Address</b>	20401 S.W. Birch Street, Suite 300
<b>City, State or Province, Country</b>	Newport Beach, CA 92660
<b>Phone</b>	(949) 851-8383

# Exhibition of School Planning + Architecture Project Data

<b>Project Name</b>	Hawthorne High School Phase 1
<b>City</b>	Hawthorne
<b>State</b>	CA
<b>District Name</b>	Centinela Valley Union High School District
<b>Supt/President</b>	Greg O'Brien
<b>Occupancy Date</b>	September 2014
<b>Grades Housed</b>	9-12
<b>Capacity(Students)</b>	2,200
<b>Site Size (acres)</b>	22 Acres
<b>Gross Area (sq. ft.)</b>	92,000
<b>Per Occupant(pupil)</b>	N/A
<b>gross/net please indicate</b>	
<b>Design and Build?</b>	No
<b>If yes, Total Cost:</b>	
<b>Includes:</b>	
<b>If no,</b>	
<b>Site Development:</b>	See Building Construction
<b>Building Construction:</b>	\$37,436,505 (Combined with Site Development)
<b>Fixed Equipment:</b>	
<b>Other:</b>	
<b>Total:</b>	



# Hawthorne High School

*"Hawthorne High School is a diverse, open environment where student input and personal pursuits are honored, trust is evident, and pride permeates all, as reflected in the actions and attitudes of the school community." – Vision Statement (Site Master Planning Committee)*

***"In the end, the vision was achieved."***

