

2016 Exhibition of School Planning and Architecture

Fayetteville High School

Category: Renovation

Fayetteville Public Schools

Fayetteville, Arkansas

Fayetteville High School



Fayetteville High School

PHASE 1

- 1. AGRICULTURAL LABS
- 2. CLASSROOMS
- 3. CLASSROOMS
- 4. CLASSROOMS
- 5. COURTYARD
- 6. CLASSROOMS
- 7. SCIENCE LABS
- 8. MEDIA CENTER

PHASE 2

- 9. GREEN STREET
- 10. AUXILIARY GYM
- 11. ADMINISTRATIVE OFFICES
- 12. SOCIAL COMMONS
- 13. LOADING DOCK/CENTRAL PLANT
- 14. BRIDGE
- 15. MARCHING BAND ROOM
- 16. CHOIR ROOM
- 17. AUXILIARY GYM
- 18. COMPETITION GYM
- 19. PERFORMANCE ARTS CENTER
- 20. BAND ROOM
- 21. STAFF PARKING



A Community Icon

Community Environment: *Early in the planning process, patrons raised the question “Should we move FHS to a new location?” Although the conversation was short lived, the community collectively weighed the options and ultimately decided to keep the school on its original site. FHS is located in the heart of downtown and is adjacent to the University of Arkansas. Patrons could envision a corridor of academic excellence that surrounded a reimagined FHS, downtown Fayetteville and the University.*



A Facility for the Community

Community Environment: *The planning and design team led user groups through a five-step process of design thinking to allow educators and students to become integral to the design process. The process evolved from Discovery to Interpretation to Ideation to Experimentation to Evolution. This five-step process gave user groups the opportunity to outline their challenges and gather knowledge by touring modern learning environments around the country. The groups completed exercises where they would overlay ideas and themes into the facility, as well as define the student experience throughout the day. These exercises allowed the groups to help shape the vision and program into the Ed Specs that would be used for FHS.*



Environment Supports Curriculum

Learning Environment: *To maintain its competitive advantage in academics and attract the state's brightest students, Fayetteville Public Schools tasked the design team to strategically re-structure its high school educational program into a Small Learning Community model. SLCs are designed with core learning studios that feature discovery, project-based learning, and digital and applied learning labs to foster collaboration. Distributed administration, resource centers and dining allow students to spend a majority of their day within their SLC. SLCs are themed and prepare students for careers or college in a field of interest. The two upper floors house career programs, including Agriculture, Horticulture and the Culinary Arts program. The back half of the school features career program classrooms to allow the specialized learning to be seen from inside and outside the facility.*



Hands-on Learning Opportunities

Learning Environment: *Students at FHS have a variety of hands-on learning opportunities, including a robotics lab and student labs for multidisciplinary collaboration. The school features a broadcast studio, full wood working, metal and welding shops, animal stables for the agriculture program and the largest agricultural science lab in Arkansas. Multiple art rooms and an Art Courtyard encourage art instruction over many disciplines and display of student artwork.*



Campus Design

Physical Environment: *The Fayetteville community passionately called for a school that was designed to a minimum of LEED Silver. The process exceeded expectations when it was designated a LEED Gold facility in March 2016. Sustainable elements include integrated shades for temperature and glare control, natural light and daylight spaces for learning, water efficient landscaping, energy efficient mechanical and lighting systems and recycled materials.*

Long bands of glass along the campus buildings draw light deep into the school. Due to the site constraints, some classrooms are located on the interior of the building. Skylights over grand staircases and maker spaces let light penetrate these interior spaces.



Outdoor Connections

Physical Environment: *During construction, the media center served as a bridge linking the existing and new buildings, allowing the new to be built so students did not have to relocate. The media center features abundant glass and creates an iconic nightscape and appears as though it floats between the public and academic buildings. The media center captures incredible views of the Ozark Mountains to the south.*



University Partnership

Planning Process: *The design team was able to create 21st century learning environments in an existing facility through a massive renovation and addition that includes maker spaces, project labs, simplified circulation and joint-use extracurricular amenities. The campus is fully wireless to allow learning to happen anywhere. Instructional areas incorporate smart technology interactive learning boards, projectors, computers, satellite theaters, and teleconference areas.*

The location of the high school allows for partnerships with the University of Arkansas professors, as well as local businesses. These partnerships can elevate learning for students, giving them access to mentors, advanced programs and the chance to experience real-life, hands-on learning.

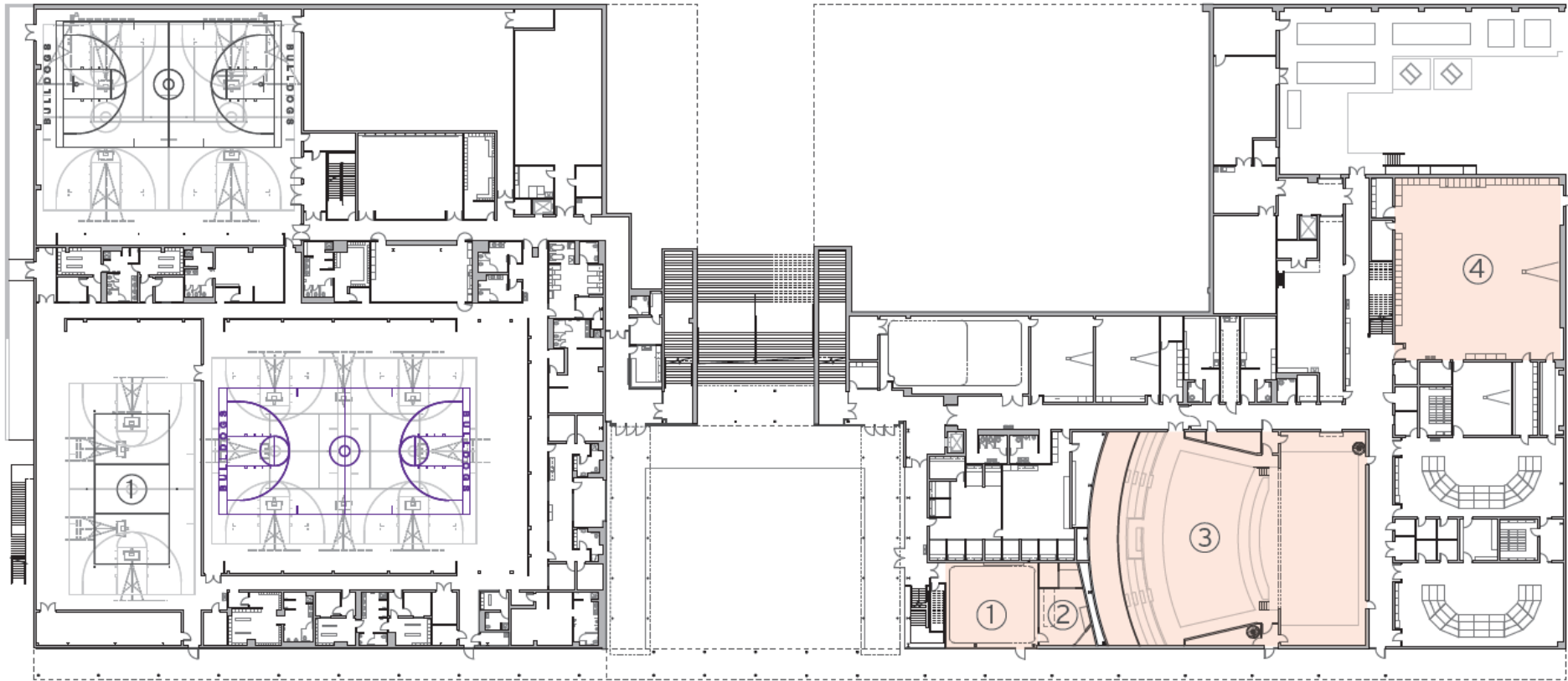


Career to College

Planning Process: *At the onset of design, some staff resisted the transition from the traditional departmental model to the small learning community model. To ease anxiety and the transition process, the team created a hybrid of traditional classrooms and incubator spaces. These incubator spaces allow students to experience hands-on projects and collaboration with other classes and students nearby. Ten to 15 classrooms in each SLC are along the interior corridor and connected to the collaborative maker spaces as a way to spark interest in students and teachers to adopt the true SLC model.*

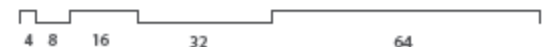


Floor Plan – Phase 1, Level 1

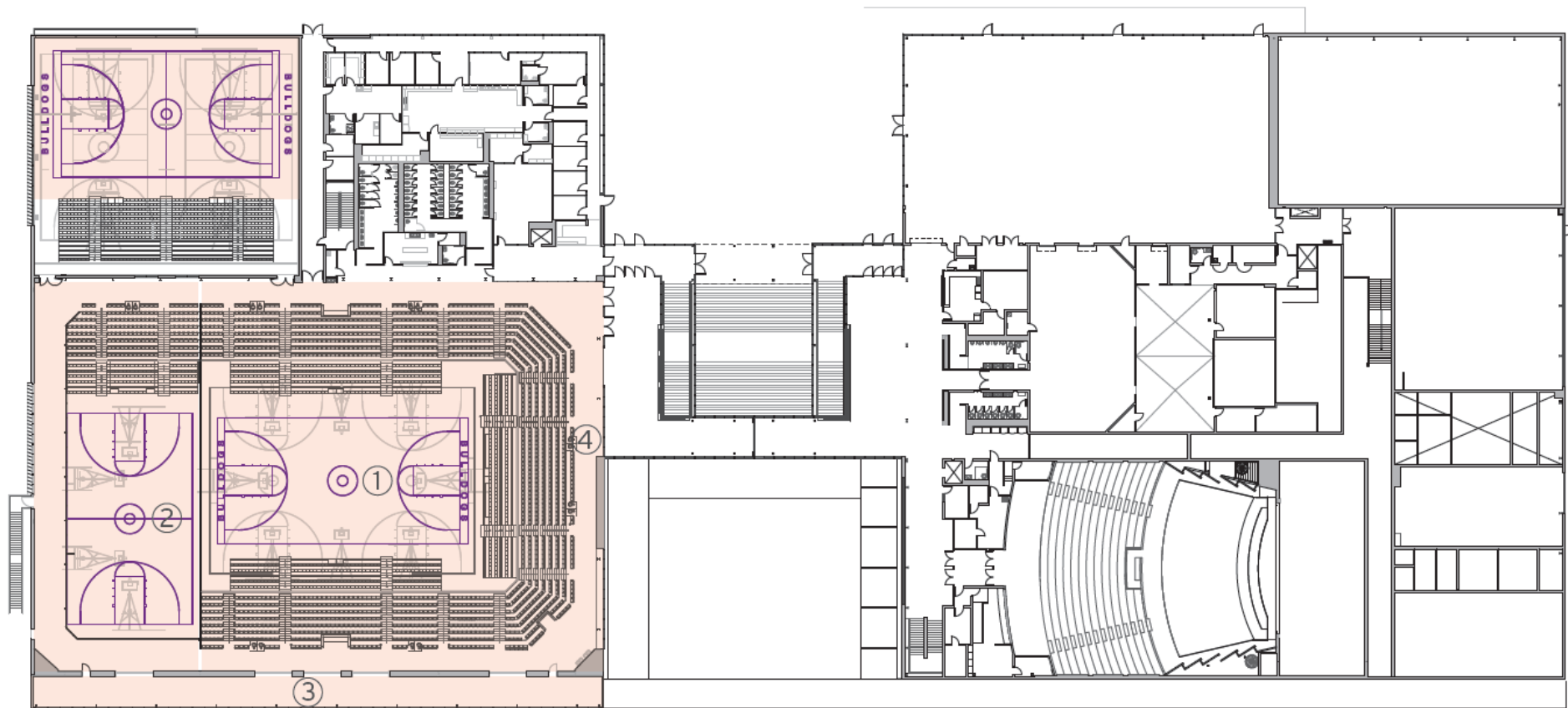


- 1. FILM STUDIO
- 2. FILM CONTROL ROOM
- 3. PERFORMANCE ARTS CENTER
- 4. BAND ROOM

🕒 PHASE 1 - LEVEL 1



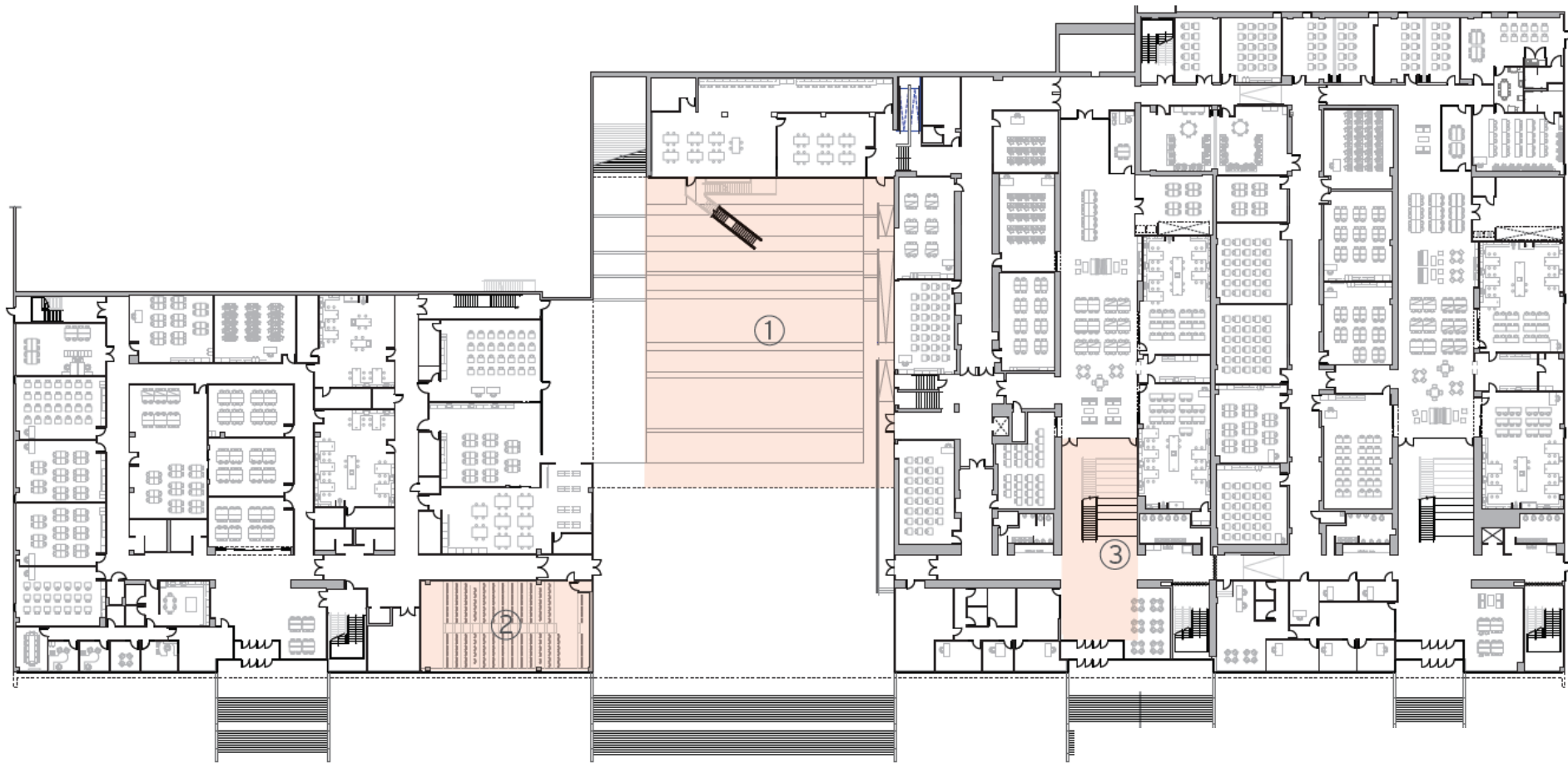
Floor Plan – Phase 1, Level 2



- 1. COMPETITION GYM
- 2. PERFORMANCE ARTS CENTER
- 3. AUXILIARY GYM
- 4. BAND ROOM

⌚ PHASE 1 - LEVEL 2

Floor Plan – Phase 2, Level 1



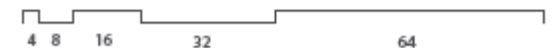
1. COMPETITION GYM

2. PERFORMANCE ARTS CENTER

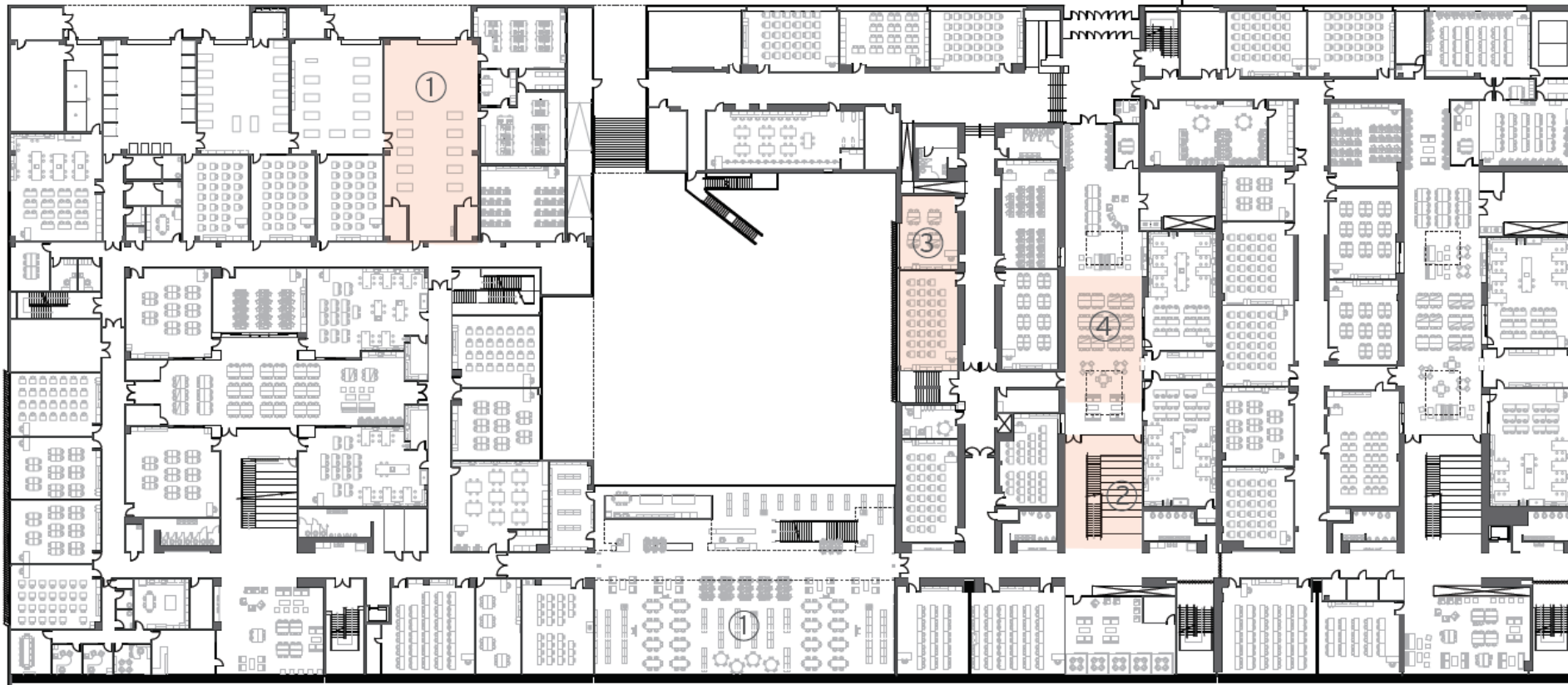
3. AUXILIARY GYM

4. BAND ROOM

⌚ PHASE 2 - LEVEL 1



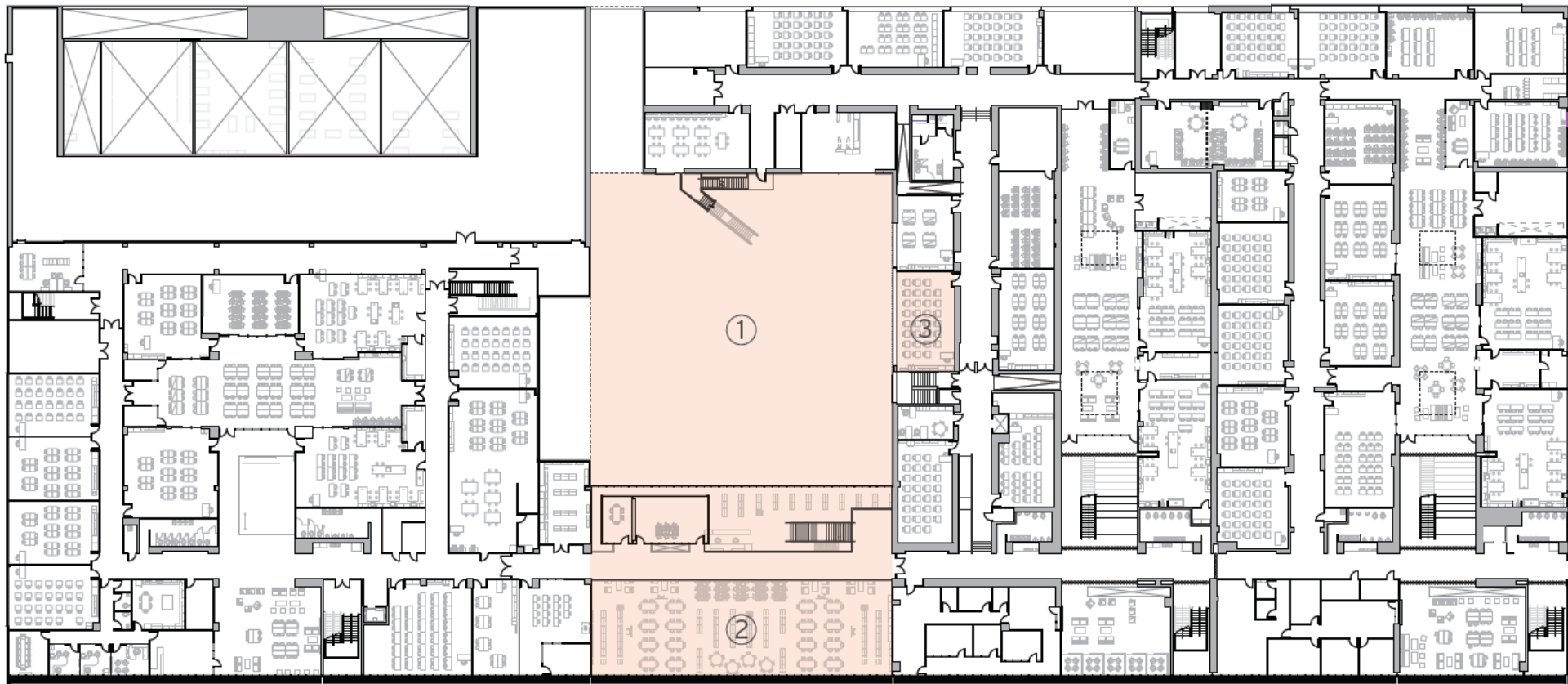
Floor Plan – Phase 2, Level 2



1. WOOD SHOP
2. AUDITORIUM SPACE
3. CLASSROOM
4. FLEX SPACE

🕒 PHASE 2 - LEVEL 2

Floor Plan – Phase 2, Level 3



1. COMPETITION GYM
2. PERFORMANCE ARTS CENTER
3. AUXILIARY GYM

🕒 PHASE 2 - LEVEL 3

Exhibition of School Planning and Architecture

Project Data

Submitting Firm :	DLR Group
Project Role	Designer, Planner
Project Contact	Jim French
Title	Senior Principal
Address	7290 W. 133 rd Street
City, State or Province, Country	Overland Park, KS, USA
Phone	913-897-7811
Joint Partner Firm:	Marlon Blackwell Architects
Project Role	Designer, Planner
Project Contact	Marlon Blackwell
Title	Principal
Address	42 East Center St.
City, State or Province, Country	Fayetteville, AR USA
Phone	479-973-9121
Other Firm:	Hight-Jackson Associates
Project Role	Architect of Record
Project Contact	Ron Shelby
Title	CEO
Address	5201 W. Village Pkwy, Suite 300
City, State or Province, Country	Rogers, AR, USA
Phone	479-464-4965
Construction Firm:	Nabholz Construction
Project Role	Construction Manager
Project Contact	Phil Jones
Title	Director of Business Development
Address	3301 N. 2 nd Street
City, State or Province, Country	Rogers, AR, USA
Phone	479-659-7800

Exhibition of School Planning and Architecture

Project Details

Project Name	Fayetteville High School
City	Fayetteville
State	Arkansas
District Name	Fayetteville Public Schools
Supt/President	Dr. Paul Hewitt
Occupancy Date	November 1, 2014
Grades Housed	9-12 grades
Capacity(Students)	3,000
Site Size (acres)	18.7 acres
Gross Area (sq. ft.)	534,000
Per Occupant(pupil)	178 SF per pupil
gross/net please indicate	
Design and Build?	No
If yes, Total Cost:	
Includes:	
If no,	
Site Development:	\$2,739,434
Building Construction:	\$83,654,945
Fixed Equipment:	N/A
Other:	\$9,505,621
Total:	\$95,900,000

By creating a cohesive campus, designers capitalized on opportunities for outdoor activities. Multiple courtyards encourage outdoor learning and the student commons incorporates outdoor dining. The Art Courtyard is intended to serve a number of functions. First it is positioned to be an oasis on campus where students can reflect on their daily lessons. Second, the Art Courtyard is a circulation path as the public moves from the north parking area and transitions through the north gateway. Patrons experience the courtyard after they descend down exterior stairs and continue through the planting beds under the elevated library.



The gym lobby and performing arts lobby mirror each other and act as their own spaces. They are connected by a bridge that can be accessed on either side of the exterior of the building. Both spaces can be active at once and accommodate thousands of patrons without disruption.



FHS features a 2,200 seat walk-down competition arena with a running/walking track around the top. The adjacent weight room is designed as a health club. A long, glass wall at the front of the weight room allows students and visitors to see the activity inside, promoting a healthy environment. The weight room includes operable shades and direct access to the indoor track and arena.



An 850 seat performing arts center features a cherry wood veneered acoustic wrap, orchestra pit, control room and fully automated set and stage rigging.



Classrooms have sliding doors that open up and allow students to spill out into larger group areas. Transparency is abundant at FHS. Learning is visible and on display for students and visitors. Many classroom walls feature writeable glass for spontaneous collaboration and group activities.

