

# 2014 Exhibition of School Planning and Architecture

## South Junior High School

Lawrence USD 497

Lawrence, KS

# South Junior High School



# South Junior High School

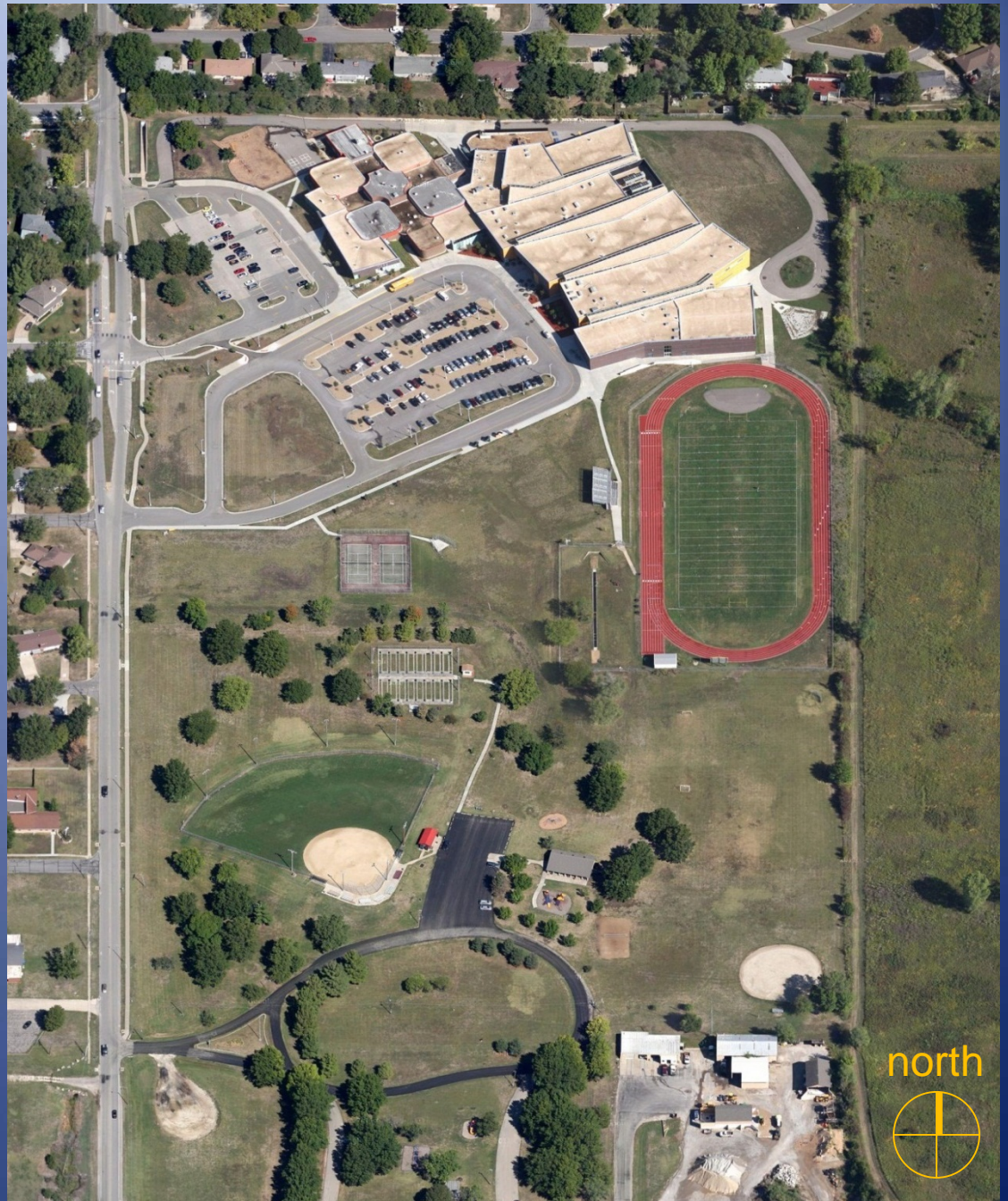


# Necessity is the Mother of Invention

## Community Environment:

The confines of the existing site were both a space challenge for the replacement school as well as an opportunity for close-knit community interaction. Construction had to occur around the existing Junior High School (occupied during construction). A wetland preserve borders the east side of the site (part of the Haskell Indian Reservation). The north end of the school connects to and shares food service with the adjacent elementary school.

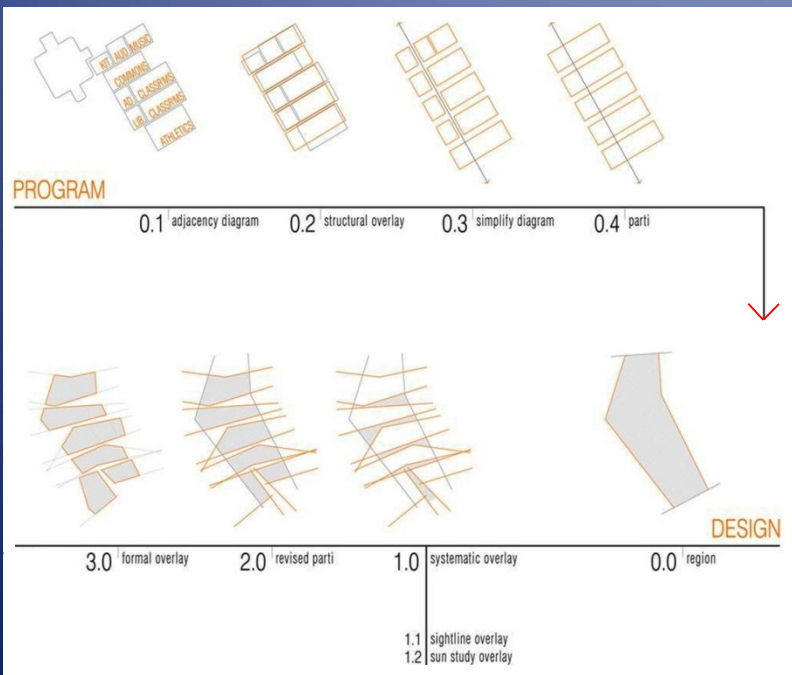
The design was partially inspired by the necessity of creating a highly compact plan that fit within the available building area. Rather than sprawling classroom wings, the “wings” are compact bars, separated by internal light wells that double as circulation and break-out Learning Commons.



# Connections to Views & Light

## Community Environment:

The academic wings and corridors are angled on the site, prying open at the ends to “scoop” light into the interiors, and enhance views of the adjacent wetlands. Larger expanses of glass at these “scoops” signal community spaces within, graciously opening up to visitors as inviting entry porches.



# Neighborhood Learning Commons

## Learning Environment:

Classrooms are organized on either side of the Learning Commons that separate each wing. The glazed overhead doors at the classrooms allow teachers to clearly view and easily access the Commons. They also bring borrowed daylight into the classrooms.

South Junior High has been a model for the District's initiatives in blended learning, comfortably supporting a variety of learning modes in a variety of settings, all easily supervised and offering students appropriate levels of autonomy.

The variable flow between classrooms also supports initiatives in cross-curricular STEAM programming, easily allowing multiple classes to work together engaging in a variety of hands-on problem-solving exercises.



# Flex-Learning + Collaboration

## Learning Environment:

The driving design premise of the school was the creation of *flexible, collaborative, & dynamic* educational experiences. The classrooms support conventional learning as comfortably as the most progressive 21<sup>st</sup> Century pedagogies. This was an important consideration as the District dealt with the time and effort required to evolve to a district-wide blended learning initiative.



## Luminous Interiors

### Physical Environment:

The spacious interiors are highly successful in creating a light-filled, supportive learning environment. The design also improves sight lines throughout the school for enhanced passive supervision and the opportunity for self-directed break-out learning.



## Material Palette Tied to Natural Context

### Physical Environment:

Extending from the inside out, the earthy materials find contextual meaning in the surrounding wetlands.

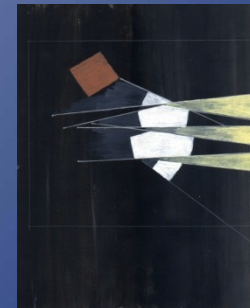
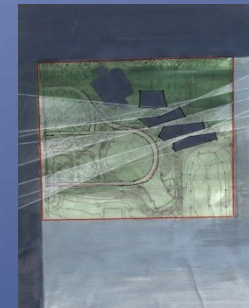
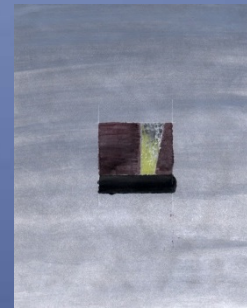
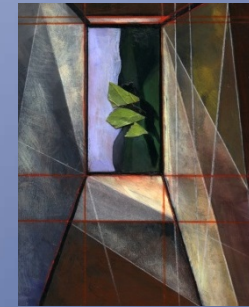
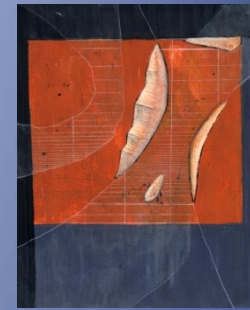
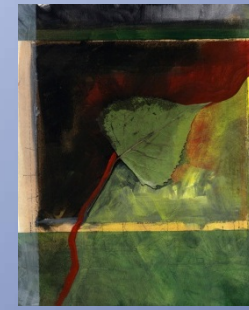
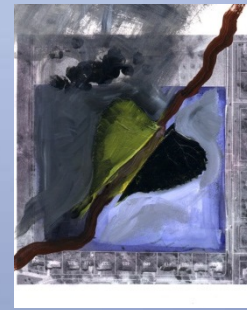


# Visioning Workshop

## Planning Process:

An early visioning workshop, involving staff, administration, teachers, and students, focused on identifying the “spirit” for the new school. Qualities such as connections to the site, creation of a strong sense of community, interconnections of different grade levels, rich materiality, and light were explored via paintings.

The semi-abstracted process enabled the stakeholders to speak more about the *qualitative* goals for the project rather than getting ensnared by functional details too early in the process.



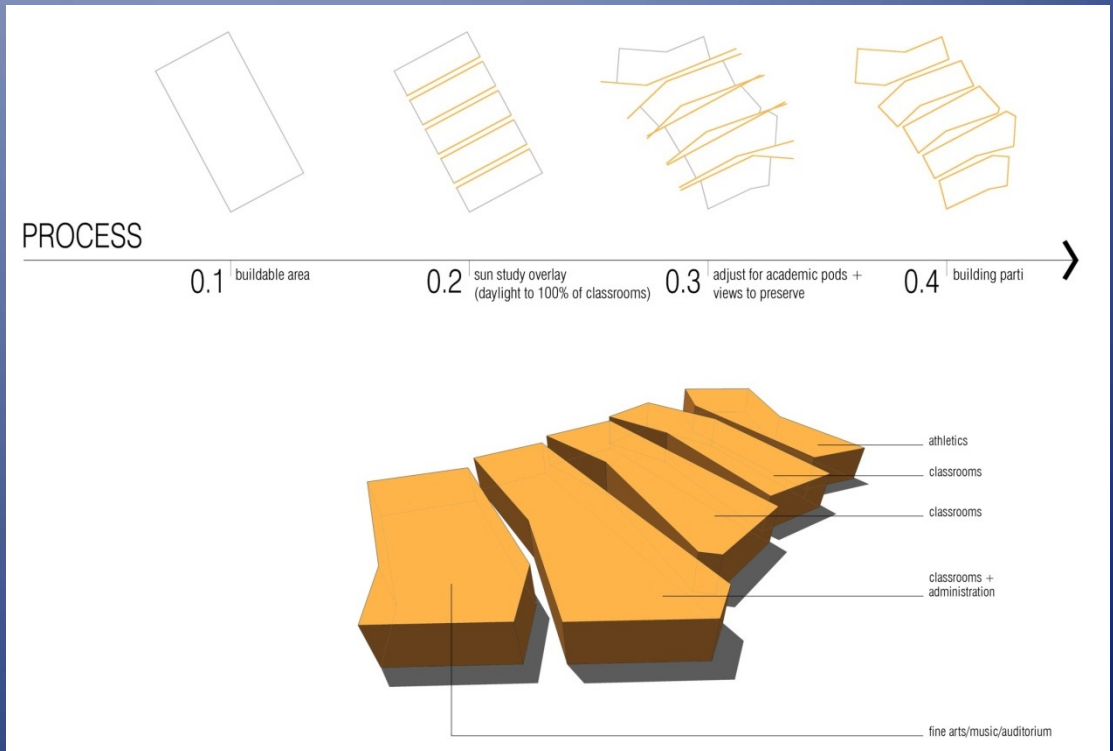
# A Parti of Interstitial Learning Spaces

## Planning Process:

The input of stakeholders during the Visioning Workshop led to the development of an idea centered around “interstitial light wells”.

A series of loosely connected bars contain all programmatic functions, while the interstitial spaces between the bars create light-filled Learning Commons.

These interstitial spaces have become flexible learning labs, fostering collaboration between classes, among student teams, and even across grade levels. They also create individual identity for the various “neighborhoods” within the school.



# Floor Plan

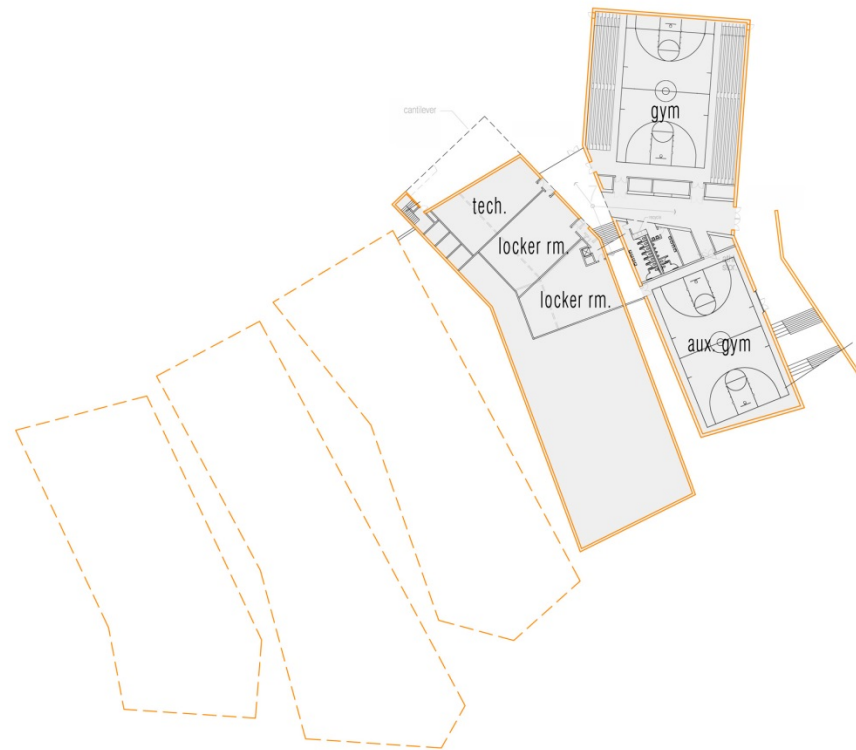


Main Floor

# Floor Plan



# Floor Plan



# Exhibition of School Planning and Architecture

## Project Data

Submitting Firm :	Gould Evans
Project Role	Architect
Project Contact	David Reid
Title	Principal
Address	4041 Mill Street
City, State or Province, Country	Kansas City, MO 64111
Phone	816.701.5335

Joint Partner Firm:	
Project Role	
Project Contact	
Title	
Address	
City, State or Province, Country	
Phone	

Other Firm:	DLR
Project Role	Construction Manager
Project Contact	Lee Fuller
Title	Project Director
Address	7290 West 133 <sup>rd</sup> Street
City, State or Province, Country	Overland Park, KS 66213
Phone	913.897.7811

Construction Firm:	Ferrell Construction Co. – Company no longer in business
Project Role	Contractor
Project Contact	
Title	
Address	
City, State or Province, Country	
Phone	

# Exhibition of School Planning and Architecture

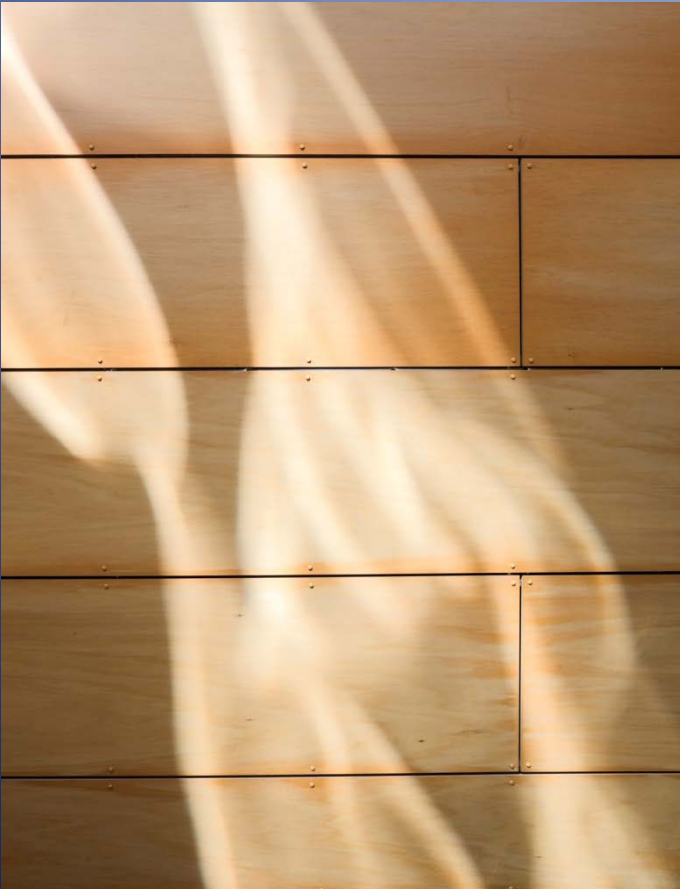
## Project Details

<b>Project Name</b>	South Junior High School
<b>City</b>	Lawrence
<b>State</b>	Kansas
<b>District Name</b>	Lawrence USD 497
<b>Supt/President</b>	Dr. Rick Doll / Will Fernandez
<b>Occupancy Date</b>	August 2009
<b>Grades Housed</b>	6 <sup>th</sup> -8 <sup>th</sup>
<b>Capacity(Students)</b>	700
<b>Site Size (acres)</b>	20
<b>Gross Area (sq. ft.)</b>	133,000 SF
<b>Per Occupant(pupil)</b>	190 SF/Student
<b>gross/net please indicate</b>	68%
<b>Design and Build?</b>	yes
<b>If yes, Total Cost:</b>	\$24,770,000
<b>Includes:</b>	Building, site development & fixed equipment
<b>If no,</b>	
<b>Site Development:</b>	
<b>Building Construction:</b>	
<b>Fixed Equipment:</b>	
<b>Other:</b>	
<b>Total:</b>	\$24,770,000

## Supporting/Supplemental Files/Images

### “Dancing Light”

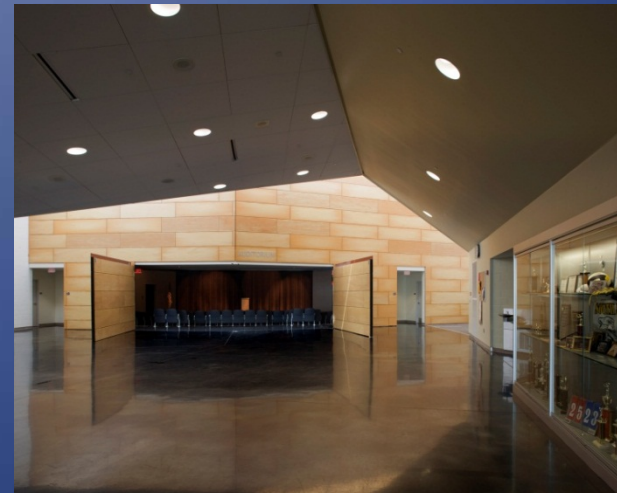
The movement of light over the course of the day animates the interior commons, constantly changing the learning environment.



# Supporting/Supplemental Files/Images

## Flexible Learning Everywhere

The Lobby / Entry Commons features movable panels separating the Auditorium, providing a contained commons environment for school events, or overflow and pre-function space that easily flows out of the Auditorium.



# Supporting/Supplemental Files/Images

## Sequenced Neighborhood Nodes

Circulation flow is fluid & logical with spacious nodes at each wing. The layout pays special attention to affinities of related functions, and offers interconnected views that support easy way-finding.



## Supporting/Supplemental Files/Images

### Efficiency Through Simplicity and Order

The rigorous organization of the floor plan decreased the typical amount of perimeter wall (one of the building's most costly systems). This efficiency offered the ability to afford the highly flexible, light-filled interiors.

