

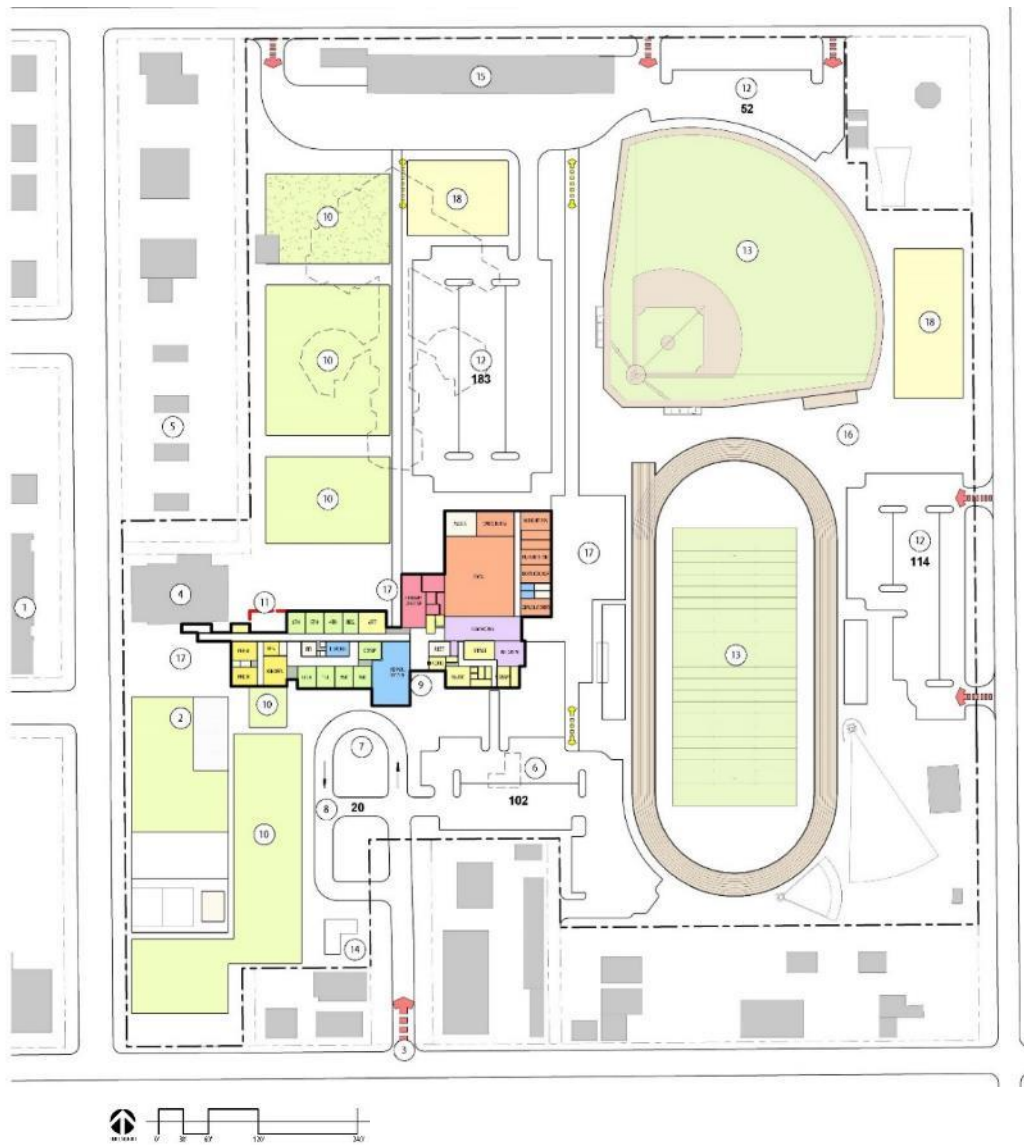
# 2014 Exhibition of School Planning and Architecture

## Holly PK-12

Holly School District  
Holly, Colorado



Holly PK-12

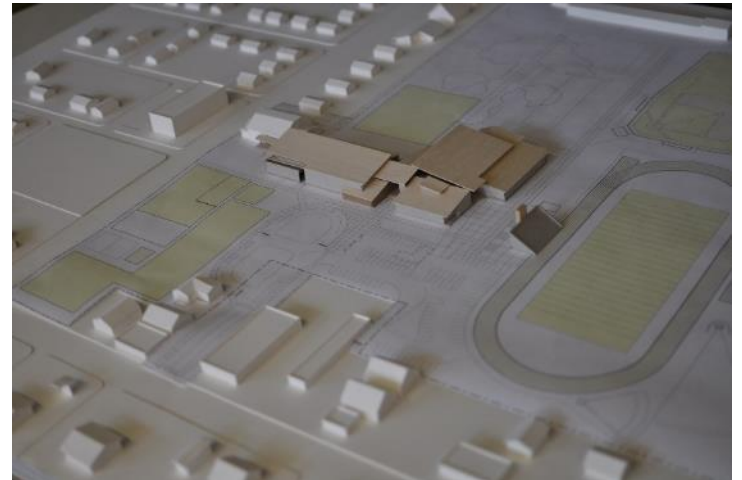


#### DEPARTMENT LEGEND

- Administration
- Art/Music
- Dining/Common
- Elementary Learning Community
- High School Learning
- Junior High Learning Community
- Library Information Center
- PE/Athletics
- Pre K - Kindergarten

#### SITE ELEMENTS LEGEND

- 1 Repurposed Shanner Elementary
- 2 Existing Sports Fields/Courts
- 3 New Entry and Sign
- 4 Restored "Old WPA" Gymnasium
- 5 Existing Faculty Housing
- 6 New Staff/Visitor Parking
- 7 New Parent Drop-Off
- 8 New Bus Drop-Off
- 9 New Pre K - 12 School Building
- 10 Outdoor Learning/Play/Practice/Community Garden
- 11 Future Expansion
- 12 New Sports Event Parking
- 13 New Athletics Playing Fields & All Weather Track
- 14 Superintendent Residence
- 15 Vo-Tech & Bus Barn
- 16 Walking Trail
- 17 Plaza
- 18 Water Quality



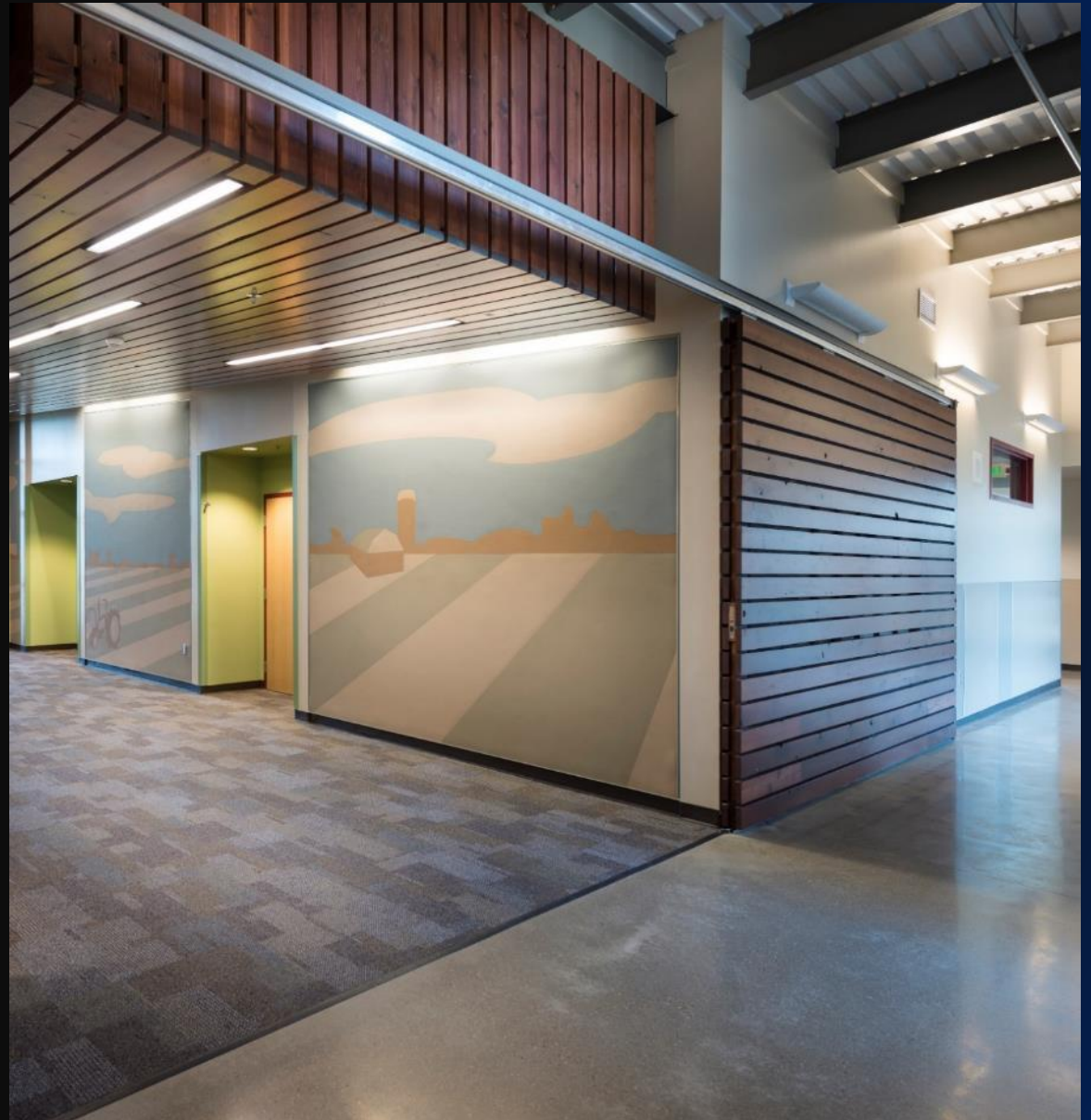
# Holly PK-12



# Small Group and Collaboration

**Community Involvement:** As the cornerstone of this small community, the new Holly school reinforces the ties between the school and the community.

The architecture of the new school for Holly promotes 21st Century education, acknowledges the vernacular context of Holly and accommodates local events and social gatherings within the community. The design team identified the important educational objectives, regional materials, landforms, weather patterns, facility and site development strategies and incorporated this understanding into the design of a modern, progressive school facility; thereby connecting the architecture of the new school to the people, place and region of Holly, Colorado.

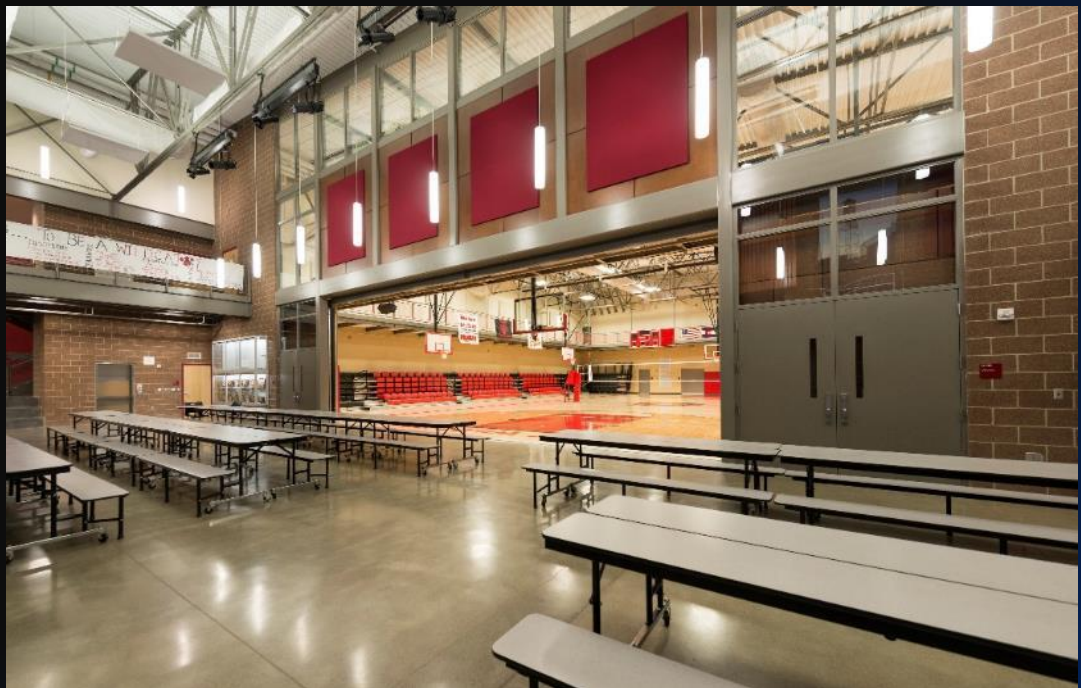
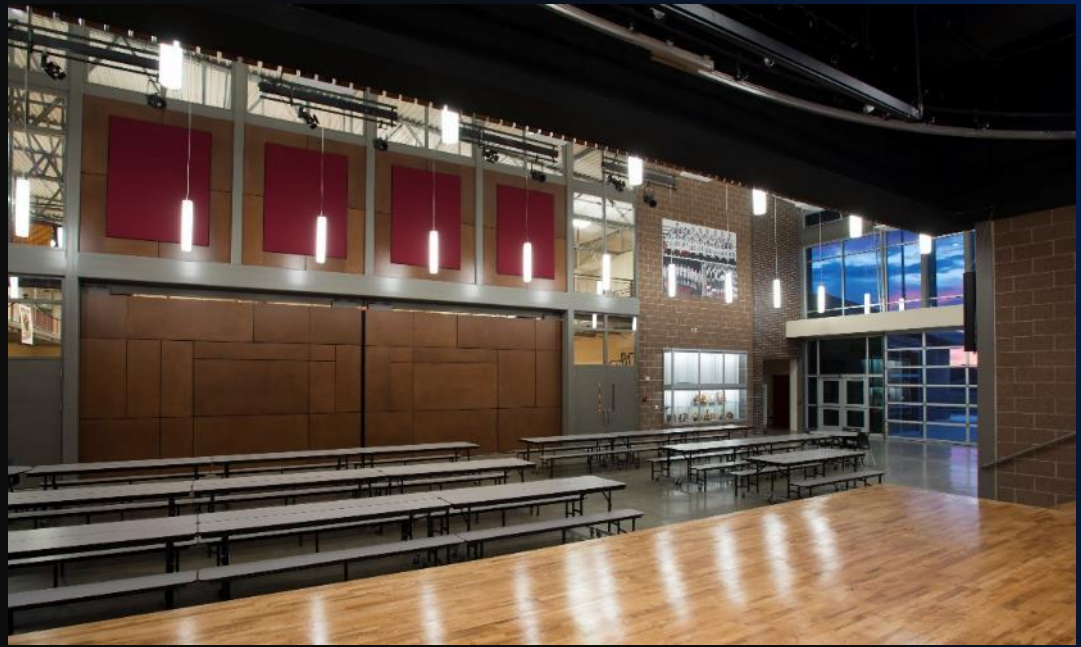


# Flexible Design

## **Community Involvement, continued:**

The commons is located and designed to specifically address community interaction. Designed as a flexible space that can expand, contract, and connect to the exterior through a large operable wall between the gym and commons and a large overhead commercial glass garage door directly tied to the exterior, the space can adapt to a wide range of community activities through the adjacency of support spaces and flexible design features.

In addition to the library, distance learning lab, board room, and computer labs, the gymnasium serves as a central community space for the town of Holly. The elevated walking track within the gymnasium is accessible to all members of the community for the progression of health wellness initiatives.





# Learning Environments

**Learning Environment:** To meet the District's goal of 21<sup>st</sup> century learning environments and to insure district-wide student safety, security and health, the school is arranged in age-specific "Learning Communities" that utilize shared facilities to promote and separate age appropriate "academic neighborhoods", grade transitions and internal zoning, especially critical in a PK-12 model.

To honor the values of stewardship, propriety and operational efficiency, ample storage facilities were provided in all educational, athletic, and staff areas. This promotes uncluttered classrooms, facility-wide organization, and material access.





## Multi-Media

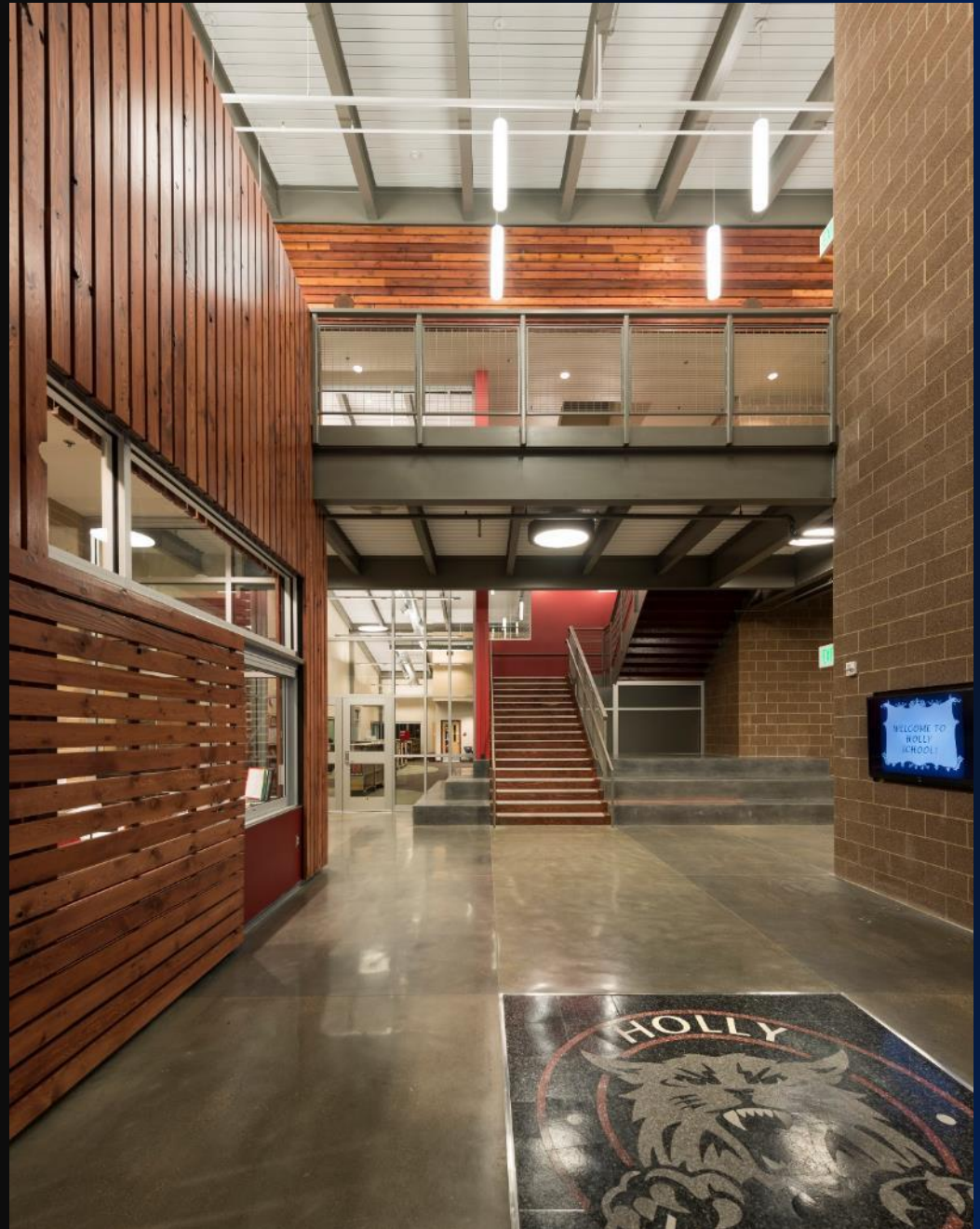
**Learning Environment, continued:** To encourage “Life Long Learning” through community access, local partnerships and global networks, the design of the new school enhances broader opportunities of Continuing Education with the ability to function as a strategic community-wide educational and civic resource. Through the distance learning studio, the facility can serve the students and adults of the Holly School District in an effective and regionally strategic manner.



# Community Identity

**Physical Environment:** The age-specific “Learning Communities” within the school were designed around the specific requirements of the students, parents, and teachers in each learning community. Student amenities were designed based on student’s academic development with appropriate breakout spaces, adjacency to outdoor spaces, access to technology, and art and science labs. Classroom locations were selected based on both parent and student criteria for access and safety.

The school is the center of the Holly community and special attention was paid to allow for community access to the building. Functions to support the community were located to allow for easy access but not disturb or compromise the security of the building before or after school. The board room, library, distance learning classroom, and commons are easily accessible through the secure entry of the building.

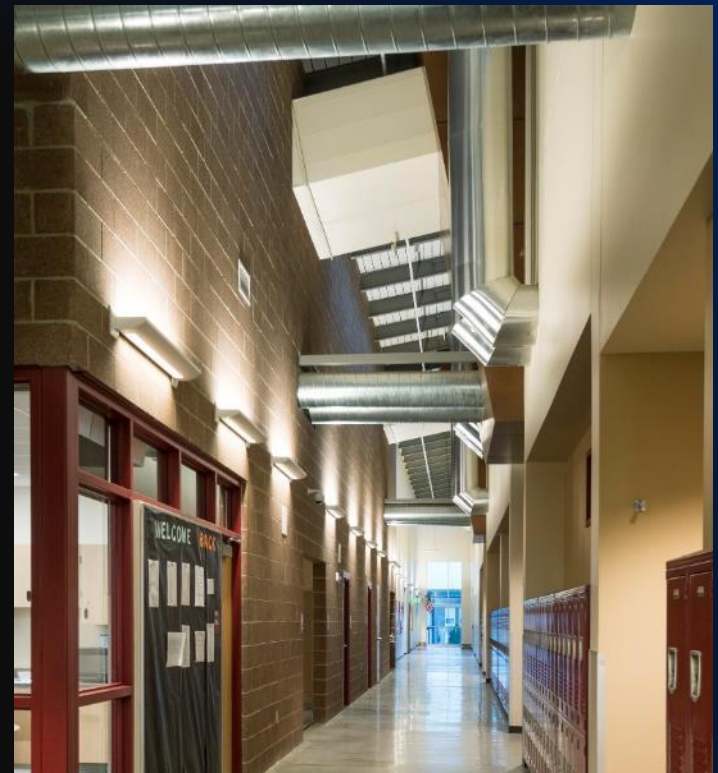




# Learning Opportunities

**Physical Environment, continued:** The final design of the school reflects the straight forward and pragmatic nature of the community by creating solutions that satisfy the requirements of the project while expressing the systems needed to operate the building. Through polished concrete floors, exposed tubular daylighting device tubes, and expression of the mechanical and electrical systems throughout the building, students gain an understanding of the systems and sequential process required to build a 21<sup>st</sup> century school. The building utilizes reclaimed lumber and decking from the former Anna Bryce School in multiple locations to express the heritage of the community and demonstrate the ability of new buildings to reuse existing materials.

Key to the design solution was providing appropriate design features to support teachers and students in the new PK-12 facility. The design team integrated a variety of technology options into the building including interactive smart boards in every classroom, a common distance learning classroom, student breakout spaces for each age based learning community, and high performance daylighting and acoustics in every classroom.





## Building for the Future

**Planning Process:** The town of Holly Colorado experienced an epic four day blizzard followed by a 600' wide F4 tornado in March of 2007 which left a large shadow over the Holly community. Faced with deteriorating buildings and concerns for student safety, the district embarked on a master plan process to identify a vision for the District's future. After an extensive evaluation of the existing district facilities it became apparent that the best way forward was to replace the inadequate School District buildings, constructed in the 1930's, 40's, 50's, and 60's, with a single new building which would meet the community's current and future educational needs.



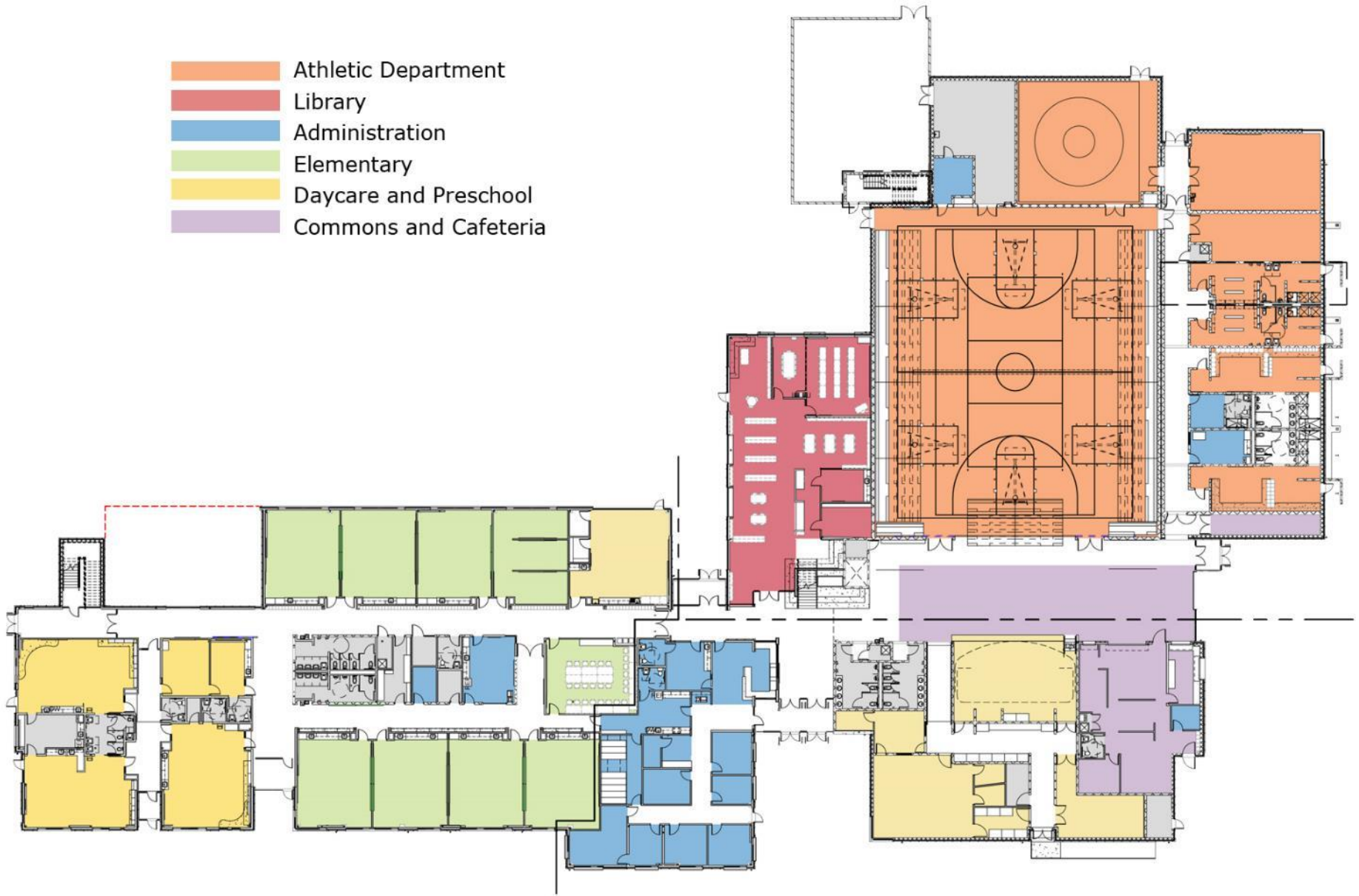


**Planning Process, continued:** Through a highly interactive process comprised of nine design advisory team meetings and three community meetings, the district priorities were identified and guided the final design solution from the beginning of the process to the end. Design advisory team members included school board members, principals, teachers, parents, students, neighbors, and the mayor of Holly; and the meetings included presentations by teachers, students, and the community.

- Design “21st Century” Educational Environments that Support Academic Excellence and Achievement
- Insure District-Wide Student Safety, Security and Health
- Provide State of the Art, Regulation, Athletic Fields and Sports Facilities
- Integrate Proven, High Performing Sustainable Design Principles into the Design of the New School
- Honor the Values of Stewardship, Propriety and Operational Efficiency
- Encourage “Life Long Learning” through Community Access, Local Partnerships and Global Networks
- Promote a Sense of “Community” and “Regionalism,” by fitting the Modern Architecture of the New School Building to the Land, the People, their Activities and the “Place” of Holly
- Support and Enhance Local Commerce, Development and Exchange

These eight principles served as the roadmap to develop and test the design solutions evaluated by the design advisory team.

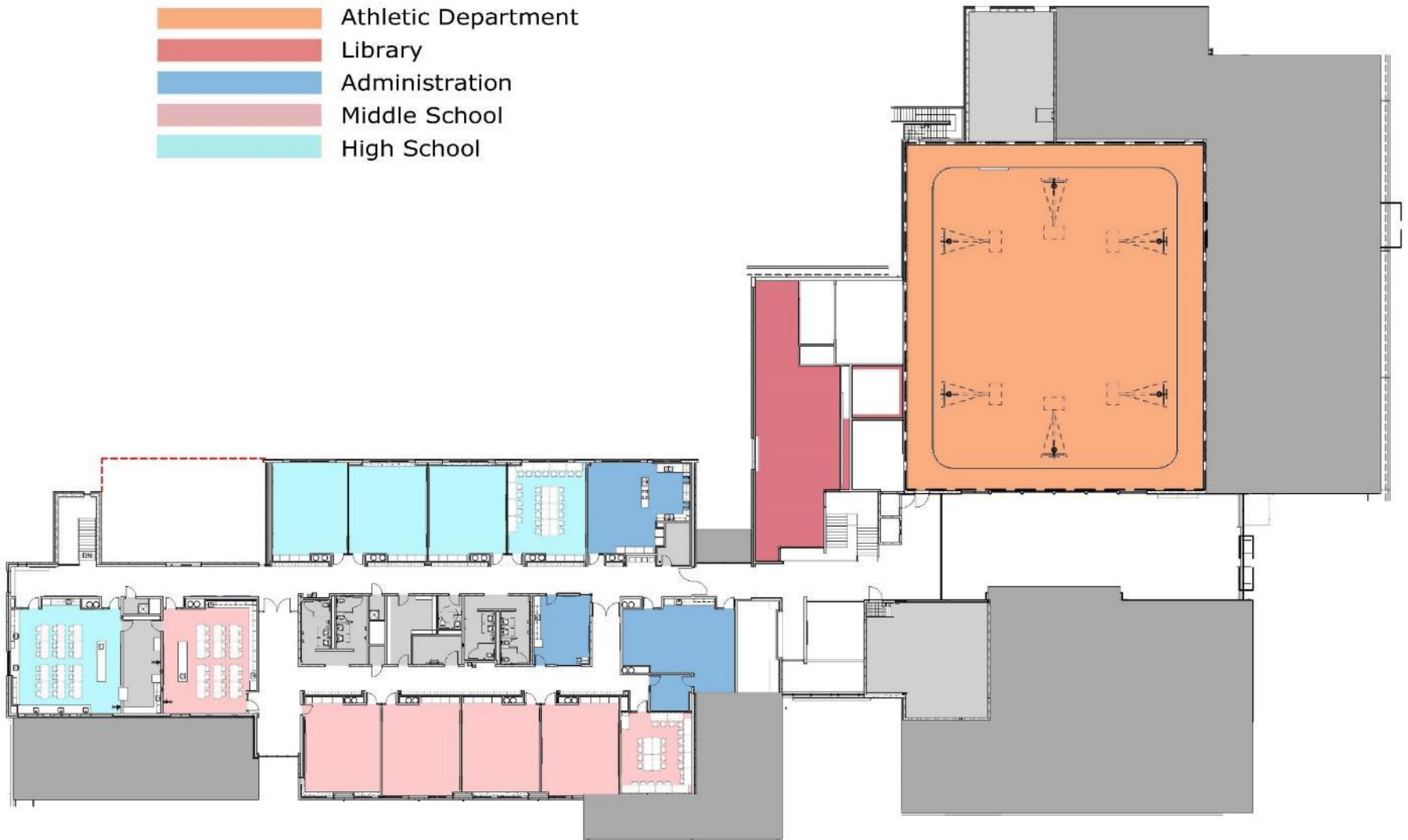
- Athletic Department
- Library
- Administration
- Elementary
- Daycare and Preschool
- Commons and Cafeteria



1<sup>st</sup> Floor plan



- Athletic Department
- Library
- Administration
- Middle School
- High School



2nd Floor plan

# Exhibition of School Planning and Architecture

## Project Data

Submitting Firm :	RTA Architects
Project Role	Principal-in-Charge
Project Contact	Doug Abernethy
Title	Principal
Address	19 S. Tejon St., Suite 300
City, State or Province, Country	Colorado Springs, CO 80903
Phone	719-471-7566
Joint Partner Firm:	NA
Project Role	
Project Contact	
Title	
Address	
City, State or Province, Country	
Phone	
Other Firm:	
Project Role	
Project Contact	
Title	
Address	
City, State or Province, Country	
Phone	
Construction Firm:	Adolfson & Peterson Construction Company
Project Role	CM/GC
Project Contact	Tyler Short
Title	Project Manager
Address	797 Ventura Street
City, State or Province, Country	Aurora, CO 80011
Phone	303-363-7101



# Exhibition of School Planning and Architecture

## Project Details

<b>Project Name</b>	Holly PK-12
<b>City</b>	Holly
<b>State</b>	CO
<b>District Name</b>	Holly School District
<b>Supt/President</b>	Carlyn Yokum
<b>Occupancy Date</b>	August 2013
<b>Grades Housed</b>	PK-12
<b>Capacity(Students)</b>	372 students
<b>Site Size (acres)</b>	30 acres
<b>Gross Area (sq. ft.)</b>	93,348 sf
<b>Per Occupant(pupil)</b>	251 sf (gross per pupil)
<b>gross/net please indicate</b>	
<b>Design and Build?</b>	No
<b>If yes, Total Cost:</b>	
<b>Includes:</b>	
<b>If no,</b>	
<b>Site Development:</b>	\$4,439,862
<b>Building Construction:</b>	\$18,284,685
<b>Fixed Equipment:</b>	\$1,000,000
<b>Other:</b>	
<b>Total:</b>	\$23,724,547



HOLLY SCHOOL  
DISTRICT

206

Main Entrance





Elevated track





Elementary Classroom





Music Classroom





Existing Historic WPA Gymnasium Renovation