

# 2013 Exhibition of School Planning and Architecture

## Hudtloff Middle School

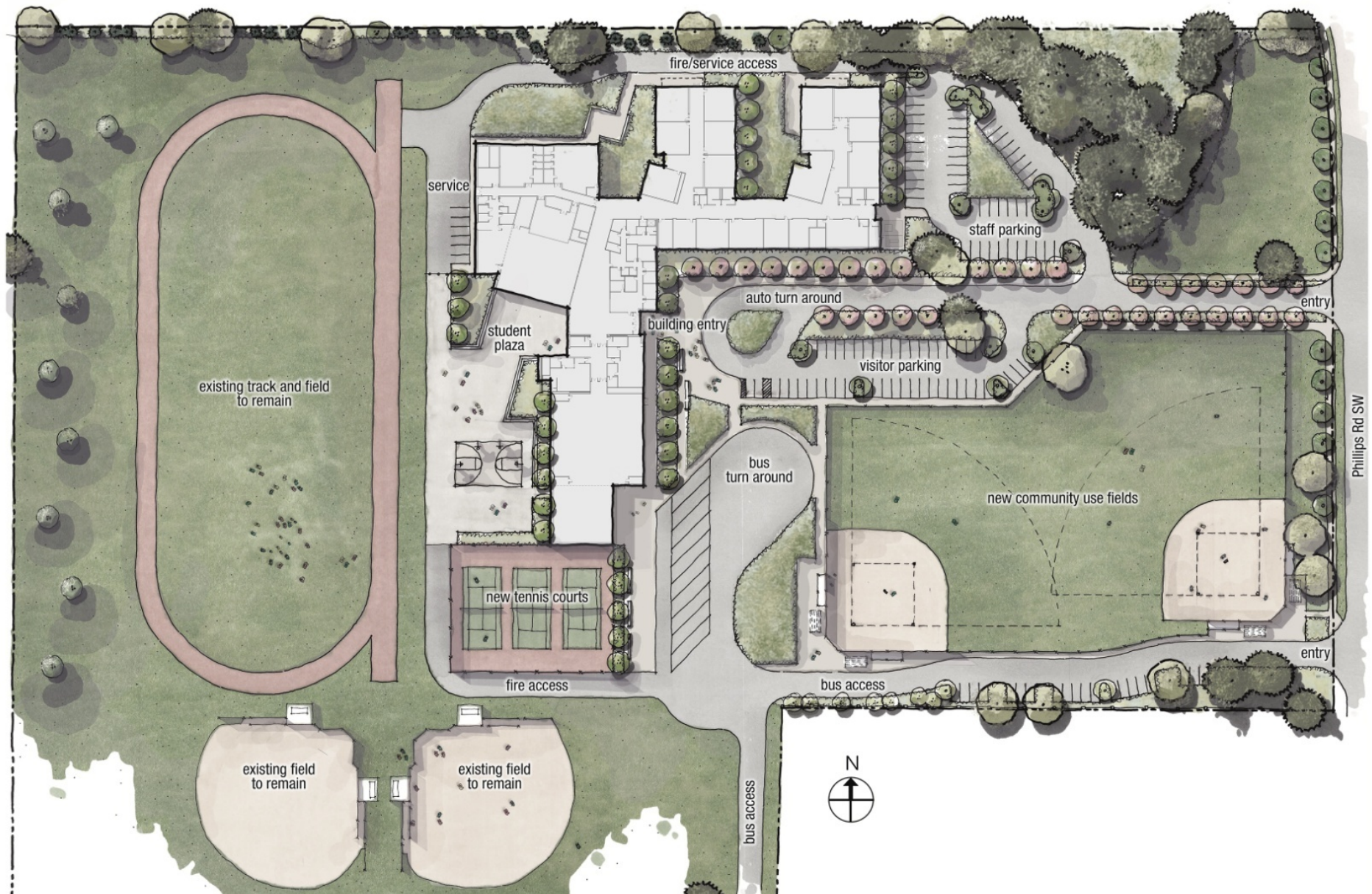
Lakewood, Washington

# Hudtloff Middle School





# Hudtloff Middle School







### *Commons*

#### **Community Environment:**

The intense community use of the existing site and building influenced the organization of the new

facility into 2 zones - an academic zone containing all classrooms; and a community zone housing the library, commons, gym, and administrative functions.



### *Cafeteria*

#### **Community Environment:**

A flexible commons/dining/performance space anchors the heart of the school. Large overhead doors, when closed, separate the dining area of the

Commons for performances and other events.

When open, a larger single commons space unifies the school. A single point of entry unifies community



*Informal gathering space*

**Learning Environment:**

The teaming approach necessitated a strong relationship for pairs of traditional classrooms, but did not accommodate strong physical relationships for other learning modalities. The current program teams math and sciences with English and humanities at each grade level. Two teachers form a core team for two classes worth of students for most of the day. Grade-level-based classroom wings of math and language arts courses were created, with a connecting resource “street” containing specialized classrooms and labs.





*Courtyard with outdoor learning environments*

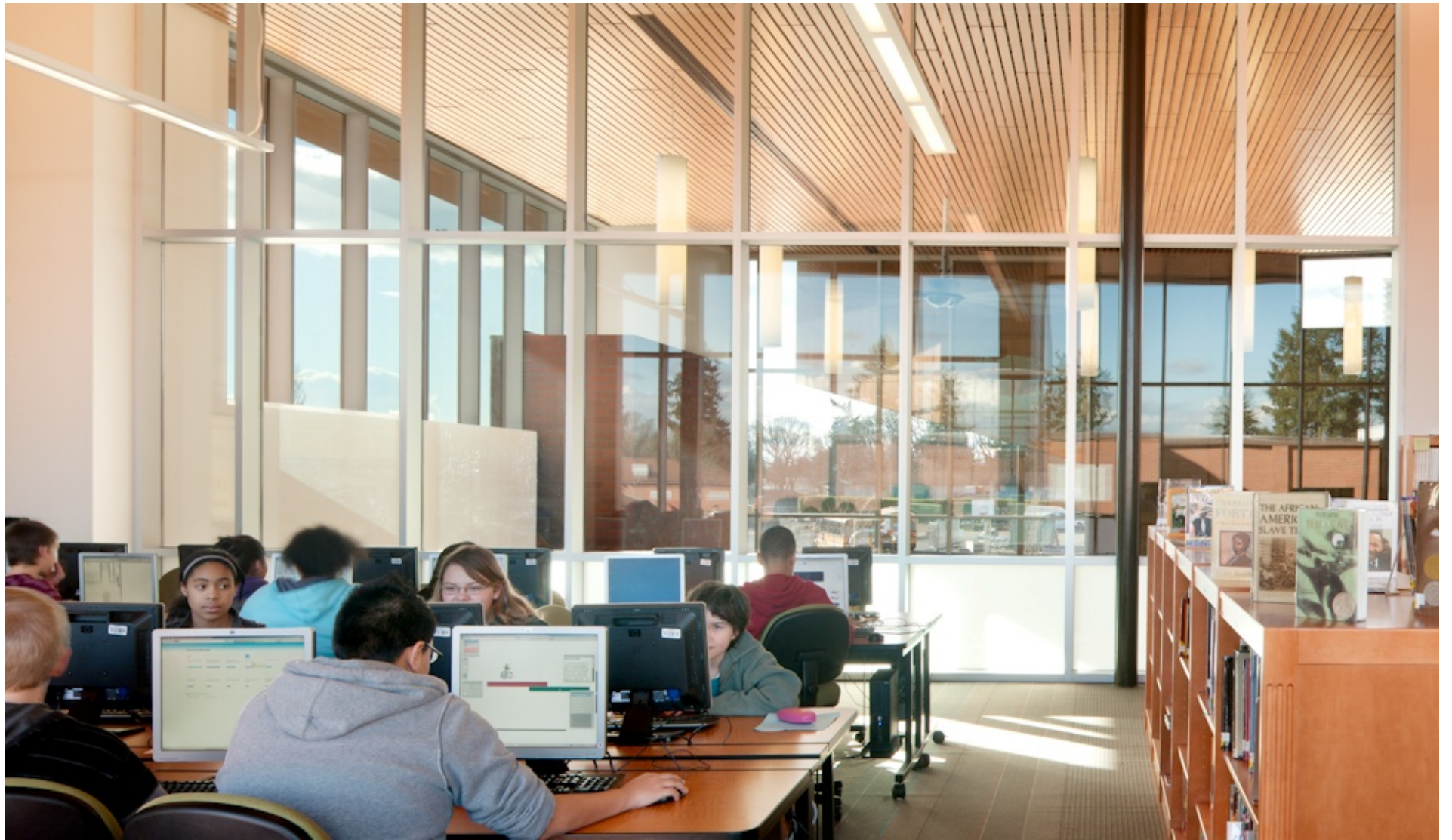
**Learning Environment:**

Beyond the classroom, any found public space in the building becomes an opportunity for small-group

learning, individual instruction, and socialization.

This intention is carried through to the outdoors and outdoor learning environments.





*Library*



*Overhead doors create a connection to the Commons*

**Physical Environment:**

Flexible and adaptable spaces create a sense of community while promoting safety and security.



*Hallway with simple, elegant materials*

**Physical Environment:**

Consistent use of simple-yet-elegant materials provides the building with the dignity of the value the community places on students as they transition through pre-adolescence.





*Daylighting and views to the outdoors*

**Physical Environment:**

The abundance of daylighting throughout the corridors, as well as daylit views to the outdoors, provides a visual connection between interior and exterior spaces.



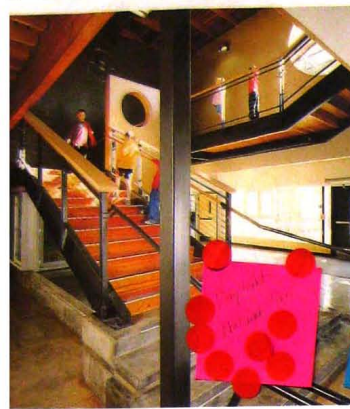
## Needs/Wants/Desires board

### Planning Process:

The process was successful as a result of the hard work of many people from the Clover Park School District, as well as the Hudtloff Middle School design team, faculty, PTSA, and ASB.

The programming process was kicked off by a "visioning game" with the PTSA that established priorities and clarified vision

## NEEDS / WANTS / DESIRES



### Maintenance / Durability / Sustain

Control operating costs by using building materials and finishes that are easy to maintain. Use the school facility as a model for environmental sustainability by incorporating sustainable building and site design practices.

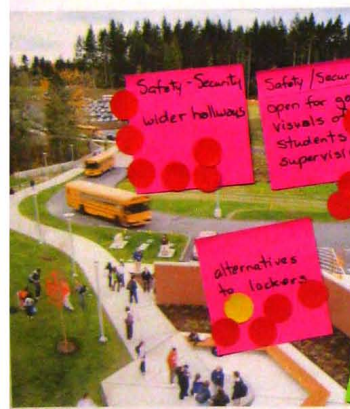
- Daylighting and occupancy sensors
- Energy efficient building
- Use low emission products to avoid allergy & asthma reactions

High Allergies

Low air system

Large Space - Discretion hallways

Need good air quality  
water based (no paint)  
low VOC materials  
good office area



### Safety & Security

Enhance learning activities throughout the school by providing a safe environment for students and staff.

- Lighting in the parking lots
- Safe exterior circulation of students (not travel through parking)
- Separation between bus and parent parking

Safety - Security  
wider hallways

Safety/Security  
open for good visuals of students supervision

alternatives to lockers

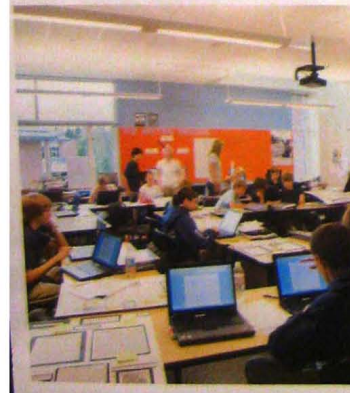
Make sure for student entrance time

Up to date space for learning

Controlled entry  
locking system  
Entrance to building and secure the entrance area  
watch for safety  
Security

Make sure for parent drop off and pick up

Clear walkways in hallways



### Integration of Technology

Integrate state-of-the-art technology throughout the school to facilitate learning activities there.

- Wireless internet
- Flexible accommodations for technology
- Technology everywhere in school, inside and outside

State of the art technology

Make sure for student entrance time

Is wireless technology everywhere in school?

Make sure for parent drop off and pick up



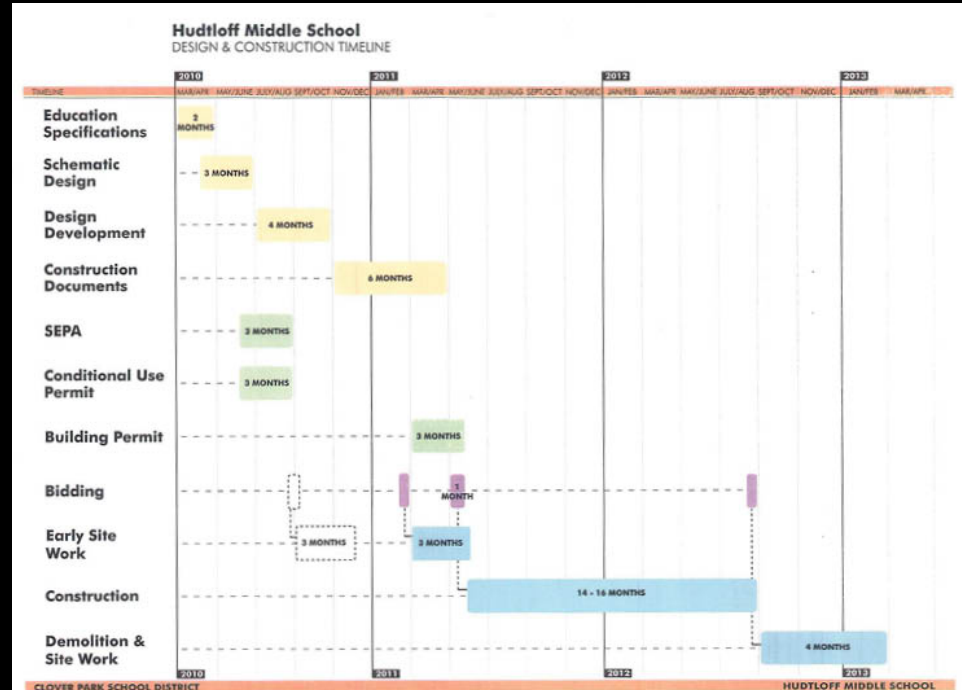
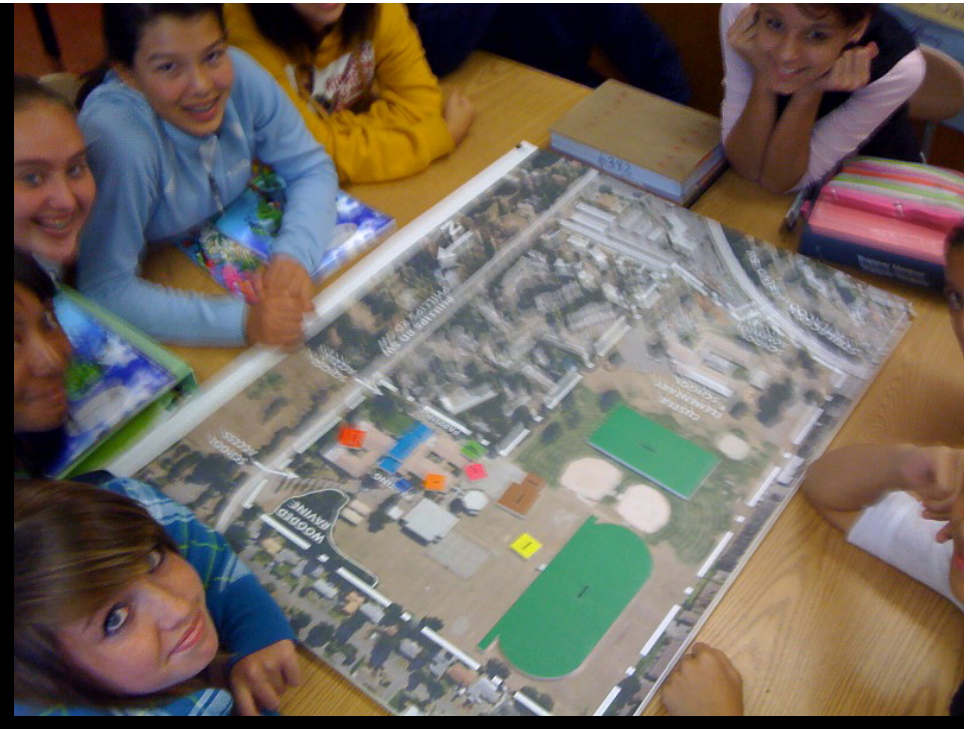
*Right: Students participate in the planning process*

*Below Right: Timeline*

## Planning Process:

Programming sessions were designed to encourage staff to think of their needs for the next 30 years. Room data information was gathered and surveys were conducted, to determine design goals and possible curriculum trends in the future.

A tour was organized of local schools and buildings that were seen as strong examples of topics and themes important to the new school design, in order to get feedback and comments from the group.



# Floor plan





# Floor plan



# Section





# Exhibition of School Planning and Architecture

## Project Data

Submitting Firm :	Integrus Architecture
Project Role	Architecture, Structural
Project Contact	Lynn Wilson
Title	Administrator for Business, Operations & Capital Projects
Address	10903 Gravelly Lake Drive SW
City, State or Province, Country	Lakewood, WA, United States of America
Phone	253.583.5000

Other Firm:	AHBL
Project Role	Civil Engineer
Project Contact	Todd Sawin
Title	
Address	2215 N 30th St, Suite 300
City, State or Province, Country	Tacoma, WA 98403
Phone	253.383.2422

Other Firm:	Weisman Design Group
Project Role	Landscape Architect
Project Contact	Nick Hagan
Title	
Address	2329 E Madison St
City, State or Province, Country	Seattle, WA 98112
Phone	206.332.1732

Other Firm:	Hultz/BHU Consulting Engineers
Project Role	Mechanical Engineer
Project Contact	Brian White
Title	
Address	PO Box 1243
City, State or Province, Country	Tacoma, WA 98401
Phone	206.383.3257

# Exhibition of School Planning and Architecture

## Project Data

Other Firm :	Cross Engineers
Project Role	Electrical Engineer
Project Contact	Steve Hubbs
Title	
Address	6509 6 <sup>th</sup> Ave
City, State or Province, Country	Tacoma, WA 98406
Phone	253.759.0118

Other Firm:	Hargiss Engineers
Project Role	Low Voltage
Project Contact	Patrick Shannon
Title	
Address	600 Stewart St, Suite 100
City, State or Province, Country	Seattle, WA 98101
Phone	888.448.3376

Other Firm:	Halliday Associates
Project Role	Kitchen
Project Contact	Laura Bourland
Title	
Address	656 NW Norwood St
City, State or Province, Country	Camas, WA 98607
Phone	360.834.6657

Construction Firm:	Bershauer Phillips Construction Company
Project Role	Contractor
Project Contact	
Title	
Address	PO Box 11489
City, State or Province, Country	Olympia, WA , United States of America
Phone	360.754.5788



# Exhibition of School Planning and Architecture

## Project Details

<b>Project Name</b>	Huddloff Middle School
<b>City</b>	Lakewood
<b>State</b>	Washington
<b>District Name</b>	Clover Park
<b>Supt/President</b>	Deborah LeBeau, Superintendent/Secretary of the Board
<b>Occupancy Date</b>	12/01/2012
<b>Grades Housed</b>	6-8
<b>Capacity(Students)</b>	800
<b>Site Size (acres)</b>	46
<b>Gross Area (sq. ft.)</b>	103,000
<b>Per Occupant(pupil)</b>	129
<b>gross/net please indicate</b>	Gross
<b>Design and Build?</b>	No
<b>If yes, Total Cost:</b>	
<b>Includes:</b>	
<b>If no,</b>	
<b>Site Development:</b>	\$3,272,235
<b>Building Construction:</b>	\$29,747,000
<b>Fixed Equipment:</b>	
<b>Other:</b>	
<b>Total:</b>	\$33,019,235