

2013 CEFPI

Exhibition of School Planning and Architecture

# Grafton High School

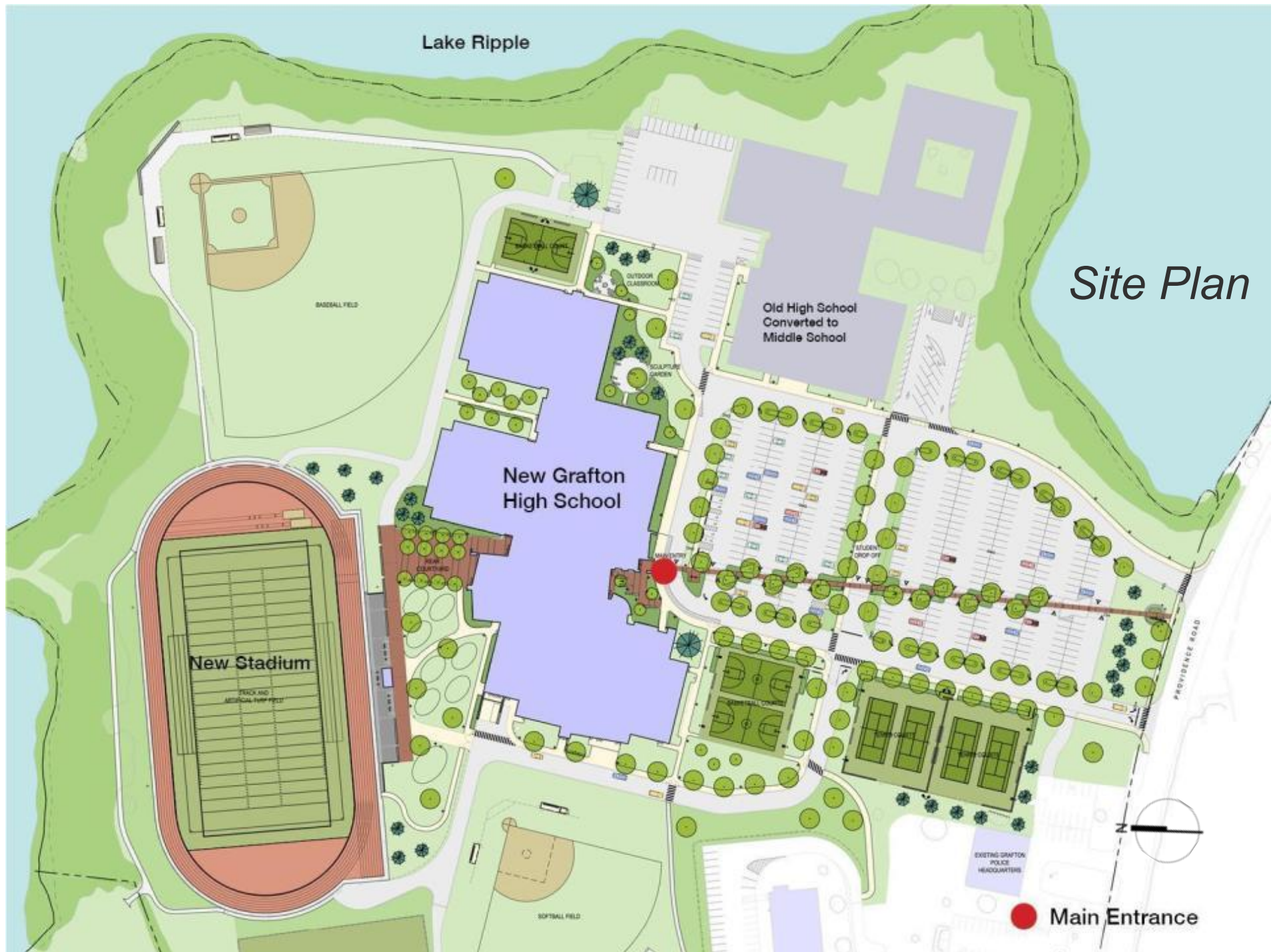
*Grafton, Massachusetts*

# *Grafton High School*

Grafton High School opened in September 2012 serving 900 students with a flexible design expandable to 1,200 for this growing community. The school was programmed and designed with a focus on 1:1 technology.



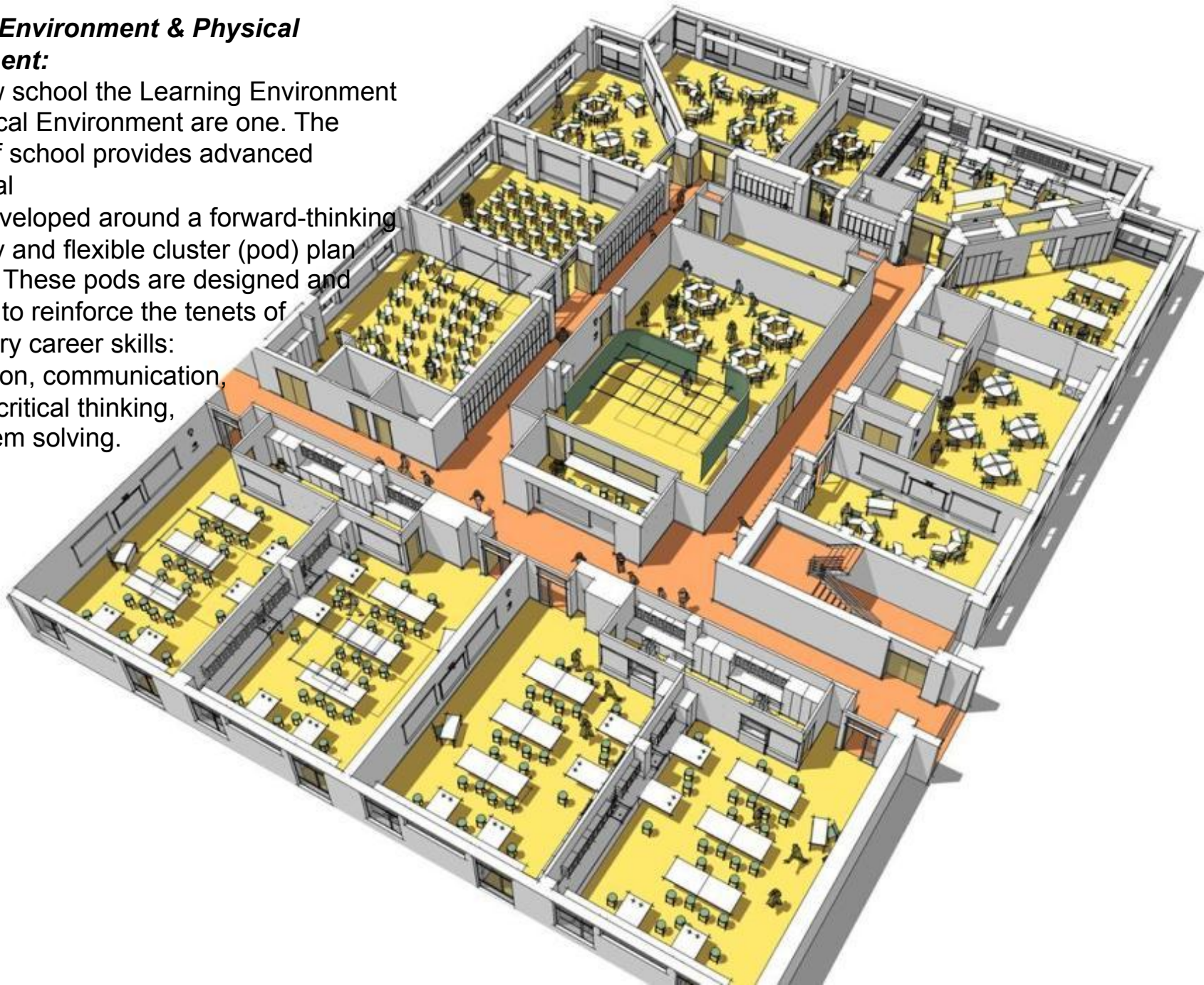






***Learning Environment & Physical Environment:***

In this new school the Learning Environment and Physical Environment are one. The 187,000 sf school provides advanced educational spaces developed around a forward-thinking philosophy and flexible cluster (pod) plan approach. These pods are designed and organized to reinforce the tenets of 21<sup>st</sup> Century career skills: collaboration, communication, creativity, critical thinking, and problem solving.





***Learning Environment & Physical Environment:***

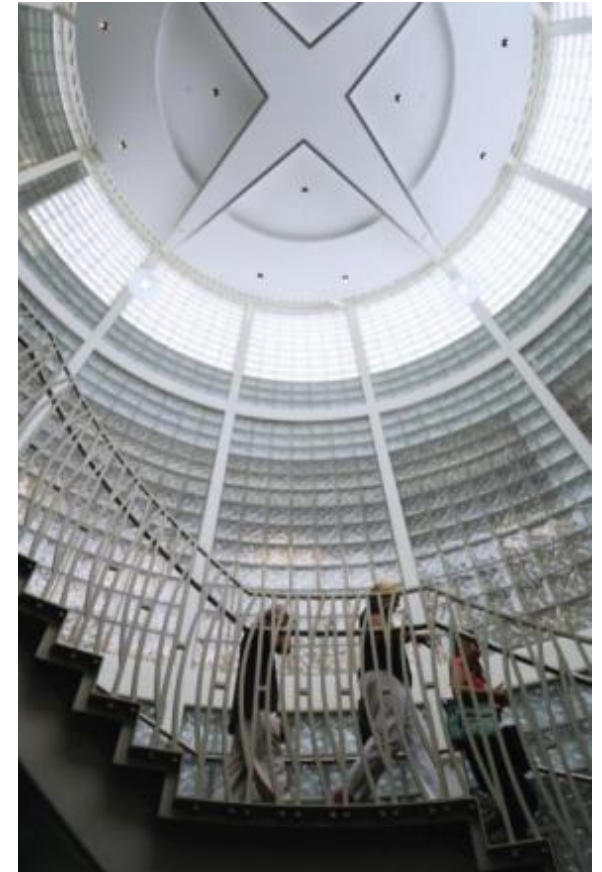
Classrooms have been designed to support student centric learning, with four teaching walls and multiple learning zones rather than the traditional teacher delivered “stand and deliver” orientation. The classroom pods create small learning communities with adjacencies and shared, multidisciplinary spaces which facilitate project based, hands on and interdisciplinary learning.





***Learning Environment & Physical Environment:***

Transparent, permeable, lively, and flexible are hallmarks of the student commons – merging the social and academic needs of students in a non “institutional” environment. Three primary community spaces are linked by the commons: Auditorium/theater, Gymnasium, and Library/Media center with it's bay windows make this the coolest place to be. The Commons is a bridge between the inside and outside worlds – a processional space linking main entrance and stadium, outdoor dining, and classrooms.





***Learning Environment & Physical Environment:***

The school and site were designed, constructed and will operate exceeding the requirements for Massachusetts CHPS for sustainability (certification pending).

*Fitness classroom*





### ***Community Environment & Planning Process:***

The new Grafton High School represents the first major milestone in implementing the district-wide Master Plan developed by the design firm. Numerous community meetings and design charrettes including ones for sustainability involved community members parents and students, many of which were televised. Every teacher and staff member along with numerous students met with our educational planning team during multiple design phases. The students were heavily involved in the discussion of how they would use technology, leading to the 1:1 implementation and informal learning environments.

*Auditorium*





Although the iPad had not yet been invented when the school was planned and designed, it was a natural inclusion for the school where the cluster plan so strongly fosters the tenets of 21<sup>st</sup> Century education. The school embodies the town's vision to promote 1:1 learning while utilizing the latest state-of-the-art technologies to facilitate this learning approach. Every student and teacher has been given an iPad with laptops for teachers and a year of preparation of curriculum revisions and professional development to ensure success of the program.



---

*Media Center*

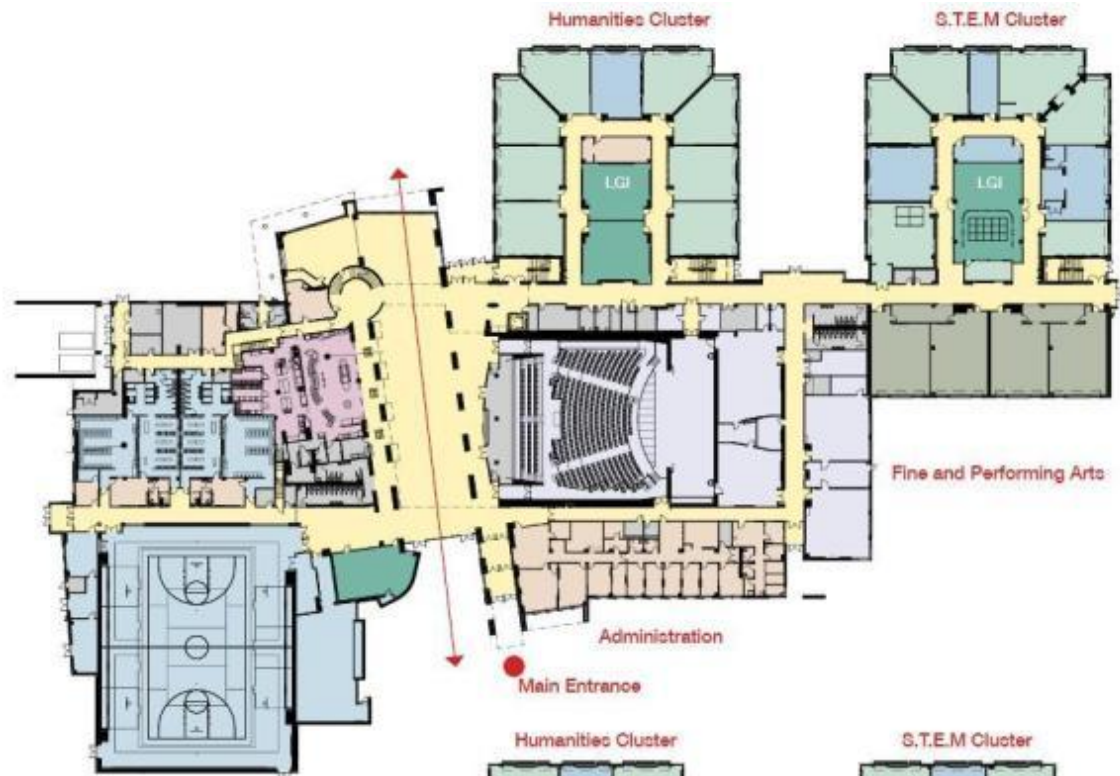


---

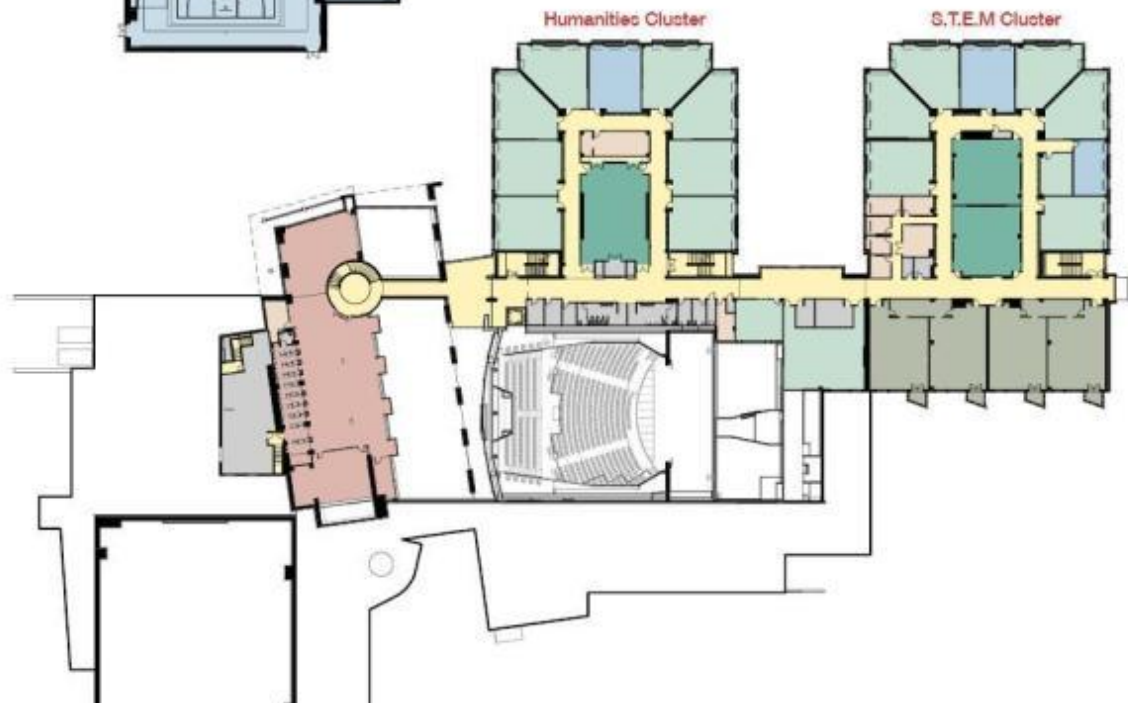
*1:1 Student to tablet*

## First Floor

PROGRAM LEGEND	
	Administration
	Art
	Cafeteria
	Circulation
	Classroom
	Custodial/Maintenance
	Fitness and Health
	Guidance/Student Support
	Library
	Nurses
	Performing Arts
	Science
	Special Education
	Special education
	Teacher Support



## Second Floor







---

***Grafton High School:***  
*The learning environment and  
physical environment are one*

*Outdoor classroom  
with slate chalkboard  
and wireless access*

---

*Sculpture Court, Foreground  
Science Greenhouses, Second Floor*







*The fascia in the servery shows  
100 years of historic photos of  
the Towns' past schools and  
community imagery*



*The two-story classroom wing has been designed to accept a third floor of classrooms, allowing the school to expand to 1,200 students with little site work. The community is growing rapidly and anticipates this expansion in 15+ years*







*Student design charrette  
on use of technology*



<b>Submitting Firm :</b>	<b>Symmes Maini &amp; McKee Associates</b>
<b>Project Role</b>	Architect of Record/Design
<b>Project Contact</b>	Philip J. Poinelli, FAIA
<b>Title</b>	Principal In Charge / Educational Planner
<b>Address</b>	1000 Massachusetts Ave.
<b>City, State or Province, Country</b>	Cambridge, MA
<b>Phone</b>	617.547.5400

<b>Joint Partner Firm:</b>	
<b>Project Role</b>	
<b>Project Contact</b>	
<b>Title</b>	
<b>Address</b>	
<b>City, State or Province, Country</b>	
<b>Phone</b>	

<b>Other Firm:</b>	
<b>Project Role</b>	
<b>Project Contact</b>	
<b>Title</b>	
<b>Address</b>	
<b>City, State or Province, Country</b>	
<b>Phone</b>	

<b>Construction Firm:</b>	<b>Dimeo Construction Corp</b>
<b>Project Role</b>	Construction Manager at Risk
<b>Project Contact</b>	Frank Allard
<b>Title</b>	Project Executive
<b>Address</b>	75 Chapman Street
<b>City, State or Province, Country</b>	Providence, RI
<b>Phone</b>	401.330.2259

<b>Project Name</b>	<b>Grafton High School</b>
<b>City</b>	Grafton
<b>State</b>	Massachusetts
<b>District Name</b>	Grafton Public Schools
<b>Supt/President</b>	Dr. James Cummings
<b>Occupancy Date</b>	September 2012
<b>Grades Housed</b>	9-12
<b>Capacity (Students)</b>	900 (Expandable to 1,200)
<b>Site Size (acres)</b>	47 acres
<b>Gross Area (sq. ft.)</b>	187,000
<b>Per Occupant(pupil)</b>	208 sf/student
gross/net please indicate	
<b>Design and Build?</b>	No
<b>If yes, Total Cost:</b>	
<b>Includes:</b>	
<b>If no,</b>	
<b>Site Development:</b>	\$7,972,600
<b>Building Construction:</b>	\$47,222,400
<b>Fixed Equipment:</b>	\$2,350,000
<b>Other:</b>	\$14,892,000
<b>Total:</b>	\$72,437,000 Project Cost