

2012 Exhibition of School Planning and Architecture

Denny International Middle School/
Chief Sealth International High School

Seattle, Washington
Renovation
Lee J. Brockway Award
Bassetti Architects

Denny International Middle School/ Chief Sealth International High School



The redesign of the high school and the remodel of the middle school focused on Seattle Public Schools' desire to strategically address student dropout rates triggered by switching campuses. Middle school students had difficulty transitioning to a high school with a low attendance and graduation record. The creation of this Span School increased options for students by giving them continuity and direction.

Above: the Galleria links the high school with the middle school

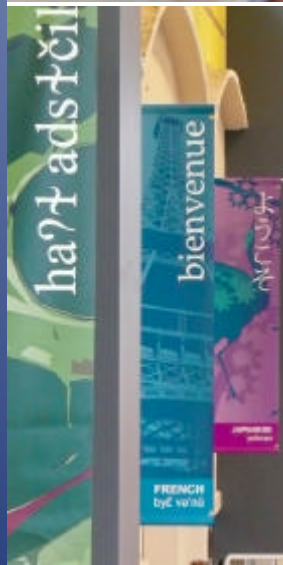
Celebrating Connections

Community Environment:

Maybe it was the “welcome” banner in my native language; perhaps it was the library that glowed in the afternoon sun promising a world of information; and it might even have been the Galleria, filled with kids from a hundred different countries talking, eating, and playing - but somehow my fear of starting school in a new country turned into excitement. I now have a home base. I’m not worried about asking questions in front of other kids because I’m in a learning community and we all know each other. I’m a proud student at Denny and when I’ve aced my classes there, I’ll cross the Galleria and work toward my International Baccalaureate at Chief Sealth.

Photos:

Welcome banners in multiple languages celebrate culture and connections



Before

Multicultural Designs

Community Environment:

The overarching design theme is **celebrating connections**: connections between the two schools, the community, a multitude of cultures, and the environment. The inclusive design begins with multilingual welcome banners that greet and connect the community, students, faculty, and staff.

An infusion of colors and textural patterns representing various cultures are experienced throughout the campus – on tiles, walls, and signage – and reinforce these connections. In support of the school's foreign language programs, interior courtyards are revitalized with culturally-themed landscapes.

Photos: mosaics in the Galleria (top right) and zonal coloring in the hallways and admin space for wayfinding (bottom right)



Supporting Academic Excellence

Learning Environment:

The clean, modern aesthetic of the revitalized high school promotes optimism and allows for future growth. Existing courtyards were redesigned as internationally-themed gardens and utilized to allow more daylight into the classrooms.

To support the District's desire to develop a global village of academic excellence, the middle school is designed around grade-based learning clusters. These six Small Learning Communities (SLC) are composed of five classrooms, each with its own science lab and adaptable breakout space for collaborative or individual use. By accommodating multiple curricular approaches and allowing connections between students and teachers in a familiar and consistent environment, SLC's create successful learning experiences and help students transition to Chief Sealth.



Natural light brightens up new Chief Sealth classrooms



**Bamboo courtyard
outside Confucius
Institute**



Before

Combined Spaces Promote Connectivity

Learning Environment:

Shared learning experiences also foster connections between students. The Galleria at the heart of the campus offers flexibility, supporting separate or joint school functions. Equipped with a video wall, theater lighting, and sound systems the Galleria accommodates student services, large gatherings, lunchtime activities, and community events. Other shared spaces include the auditorium, music rooms, Project Lead the Way (CTE) labs, and the Confucius Institute, a non-profit public institution promoting Chinese language and culture.

Co-locating these facilities enables future flexibility as technologies, needs, and curricula change. DIMS/CSIHS can become several small schools or a K-12 school in the future – a concept that also promotes sustainability.



The Galleria is a flexible gathering space for both schools



Shared theater space

Sustainable Design Cues the Project

Physical Environment:

Both the new and existing buildings are terraced into the sloping site, emphasizing the schools' connection with the earth. Rainwater collection sculptures, green roofs, natural ventilation, and excellent daylighting make DIMS/CSIHS a sustainability role model that exceeds the State Sustainability Protocol requirements. Rain gardens around the buildings and in parking lots also collect and filter water before directing it to nearby Longfellow Creek. Hardwood bleachers from the old high school gymnasium were refinished and used in casework, reception counters, eating counters, seating risers, window sills, and classroom display ledges.

Clockwise from top left: water is filtered before reaching Longfellow Creek, both schools are terraced into the site, on-site rainwater features, refinished bleachers from the high school provide interior finishes



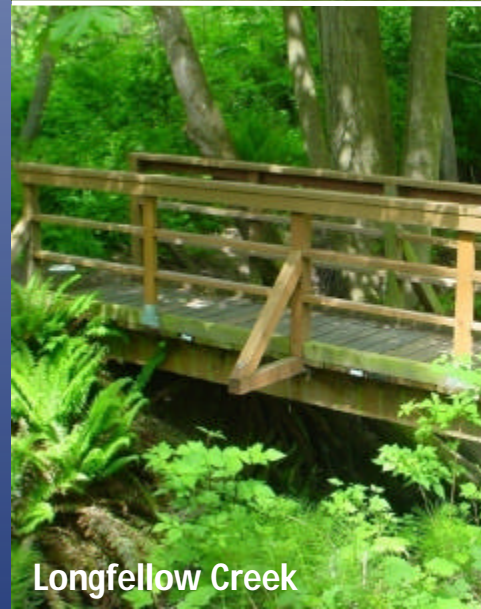
Learning is Supported by Outdoor Features

Physical Environment – Continued

Perhaps the most sustainable contribution of all was the return of Denny's old school site to open space, now used as community playfields and a park.

Each of the schools' entry courts received an expressive rainwater feature and information plaque to remind the students to be good stewards of their environment.

Outdoor wetland laboratory, green roofs, and rain gardens also support the educational programs at the schools.



Inclusive Process for Success

Planning Process:

Representatives from the community, District, and both schools - including teachers, staff, and students - were actively engaged in planning through the Design Team and community meetings. This resulted in:

- strengthening connections and celebrating cultures
- new programs and facilities for international languages, CTE, sports medicine, fitness, performing arts, and the Confucius Institute
- daylight maximization, stormwater management, green roofs, rainwater as a learning tool, and a 73% improvement in energy performance
- a wetland nursery/food garden adjacent to a salmon-bearing creek
- a revitalized high school with enhanced programs and technology upgrades
- new science labs

The Galleria butterfly roof directs rainwater to campus water features



Maximizing Daylight -
Chief Sealth



New Science Lab – Denny Middle School

Attention to Detail

Planning Process continued:

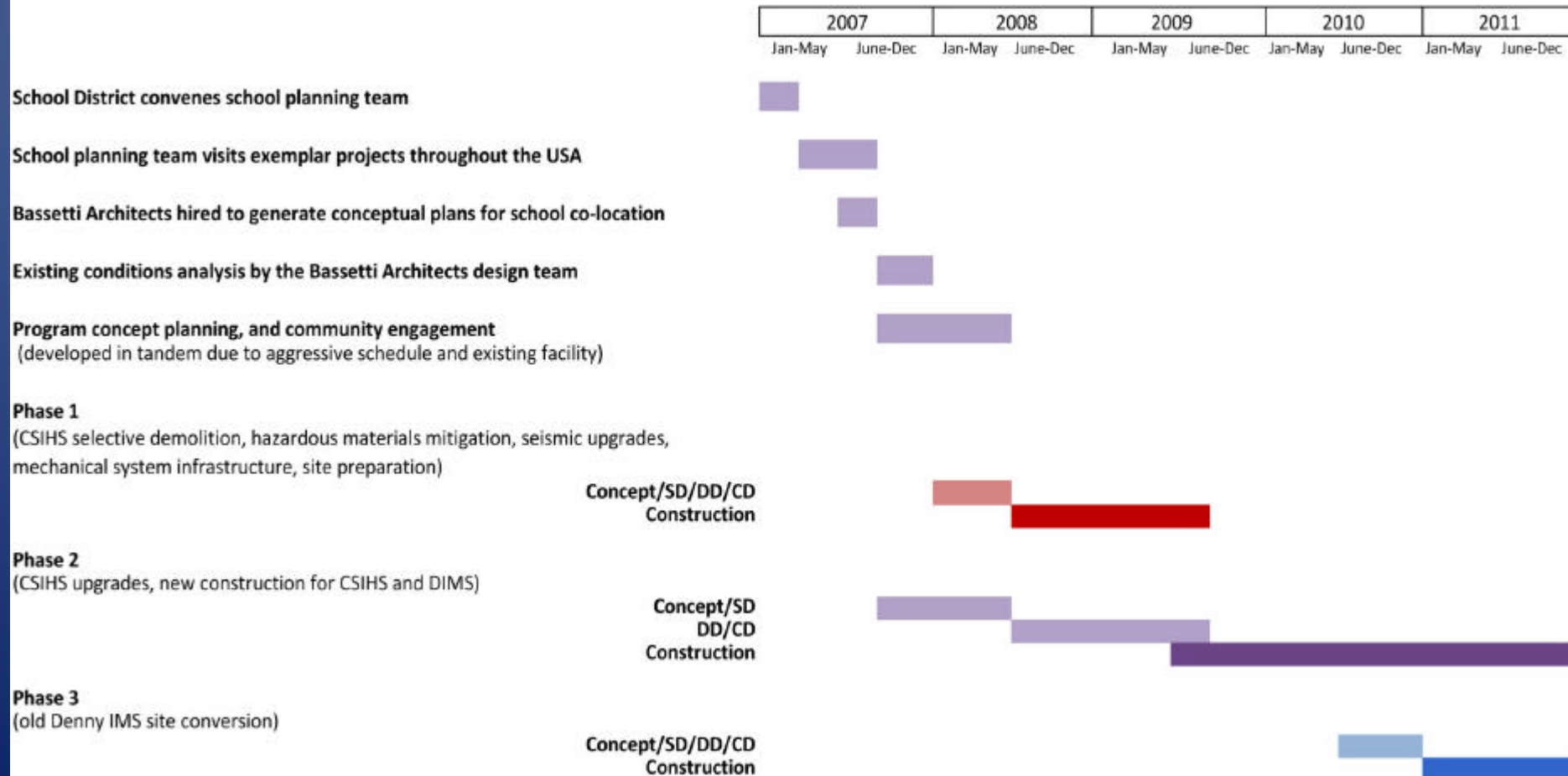
- a revitalized auditorium for student and community use
- community health centers
- a multi-purpose Galleria for individual and joint-school socializing and learning

The bottom-up prioritization of improvements, and embracing of multiculturalism, for the historically disadvantaged community fostered a sense of pride. The schools have since transformed from under-enrollment to over-demand.

Key District and Team personnel were onsite throughout the construction period to enable quick decision making. The same key individuals from the Project Team were maintained from concept to completion to keep the Vision and Goals on track. Multi-phased flexible delivery methods allowed for continued upgrades and construction challenges became program priorities.



TIMELINE



List of Participants



Don Gillmore
Bassetti Architects
DKA/Heery International
Planning Alliance
Coughlin Porter Lundeen
Berger Partnership
Wood Harbinger
Tres West Engineers
JLR Design Group
Candela
Sparling
JV Constructors
Absher Construction
BNBuilders

Seattle Public Schools
Architects
Owner's Rep
Ed Specs
Civil & Structural
Landscape
Mechanical
Electrical
Kitchen
Theatre
Acoustics
Project 1 GC
Project 2 GC/CM
Project 3 GC/CM

Exhibition of School Planning and Architecture

Project Data

Submitting Firm :	Bassetti Architects
Project Role	Architect
Project Contact	Lorne McConachie FAIA
Title	Principal
Address	71 Columbia Street, Suite 500
City, State or Province, Country	Seattle, WA
Phone	206 340 9500

Joint Partner Firm:	N/A
Project Role	
Project Contact	
Title	
Address	
City, State or Province, Country	
Phone	

Other Firm:	Planning Alliance
Project Role	Educational Specifications
Project Contact	Sue Robertson
Title	Director
Address	923 Louisiana Avenue
City, State or Province, Country	New Orleans, LA
Phone	866 558 0485

Construction Firm:	JV Constructors, Inc	Absher Construction	BNBuilders
Project Role	Project 1	Project 2	Project 3
Project Contact	Gary Johnson	Curt Gimmestad	Rick Philipovich
Title	President	Company Director	Project Executive
Address	325 S. Kenyon Street	11051 34 th Ave NE	2601 4 th Ave
City, State or Province, Country	Seattle, WA	Seattle, WA	Seattle, WA
Phone	206 762 4219	205 453 4508	206 382 3443

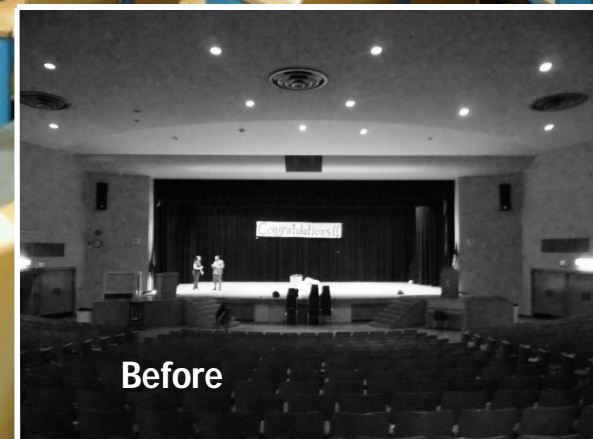
Exhibition of School Planning and Architecture

Project Details

Project Name	Denny International Middle School / Chief Sealth International High School
City	Seattle
State	Washington
District Name	Seattle Public Schools
Supt/President	Susan Enfield, Ed.D.
Occupancy Date	2011 Denny International Middle School 2010 Chief Sealth International High School
Grades Housed	6 th -12 th grades
Capacity(Students)	900 Denny International Middle School 1,200 Chief Sealth International High School
Site Size (acres)	17 acres
Gross Area (sq. ft.)	355,000 sf
Per Occupant(pupil)	169 sf/pupil
gross/net please indicate	
Design and Build?	N/A
If yes, Total Cost:	
Includes:	
If no,	
Site Development:	\$3,678,310
Building Construction:	\$85,265,000
Fixed Equipment:	
Other:	
Total:	\$88,943,310



Shared Auditorium Interior



Before



CSIHS Gym Remodel



Before



Before



DIMS Learning Courtyard



DIMS Playground



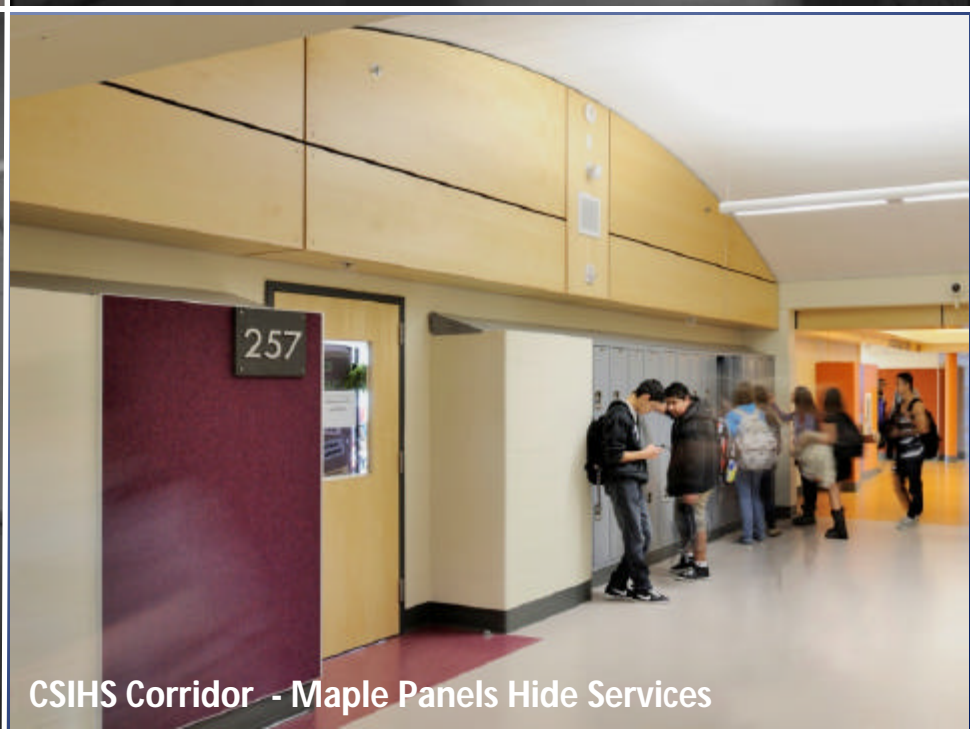
CSIHS Galleria Entrance



Before



Before



CSIHS Corridor - Maple Panels Hide Services