




2015 Exhibition of School Planning and Architecture

EPiC ELEMENTARY SCHOOL

Liberty School District
Liberty, Missouri

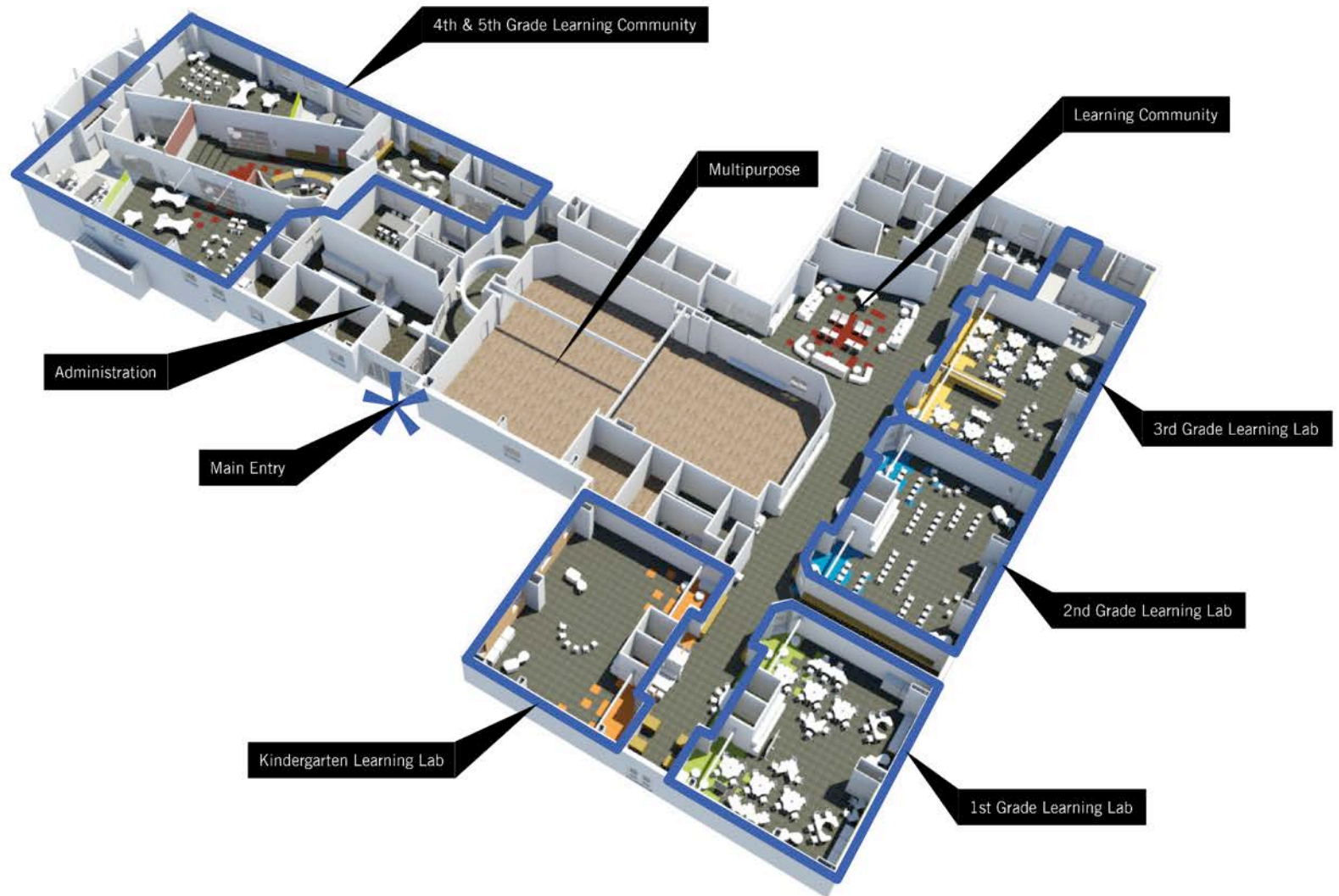
Every Person Inspired to Create

A photograph of a modern classroom. In the foreground, there are several large, colorful, patterned ottomans. A student is sitting on one of them, facing away from the camera. In the background, two more students are sitting on a set of steps, looking at books. The wall behind them is covered with many papers, posters, and notices. To the right, there is a whiteboard on wheels and a small table with chairs.

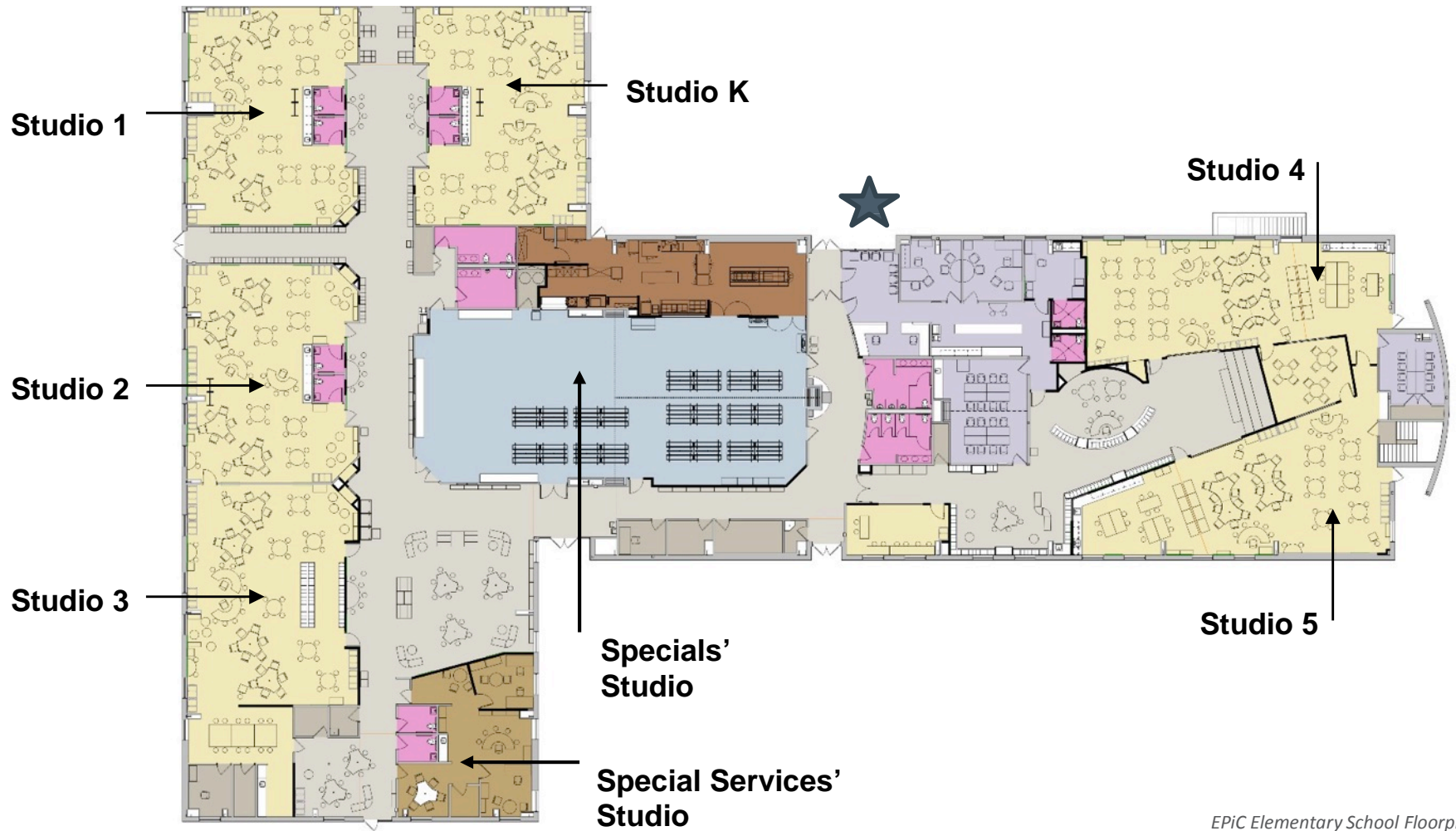
DISTRICT OFFICE BECOMES DYNAMIC 21ST CENTURY SCHOOL.

EPiC Elementary 4th + 5th Grade Collaborative Area

AERIAL VIEW INTO THE LEARNING SPACE



COMMUNITY ENVIRONMENT: Learning Environment Concepts Embedded Deep Into the Design Rationale

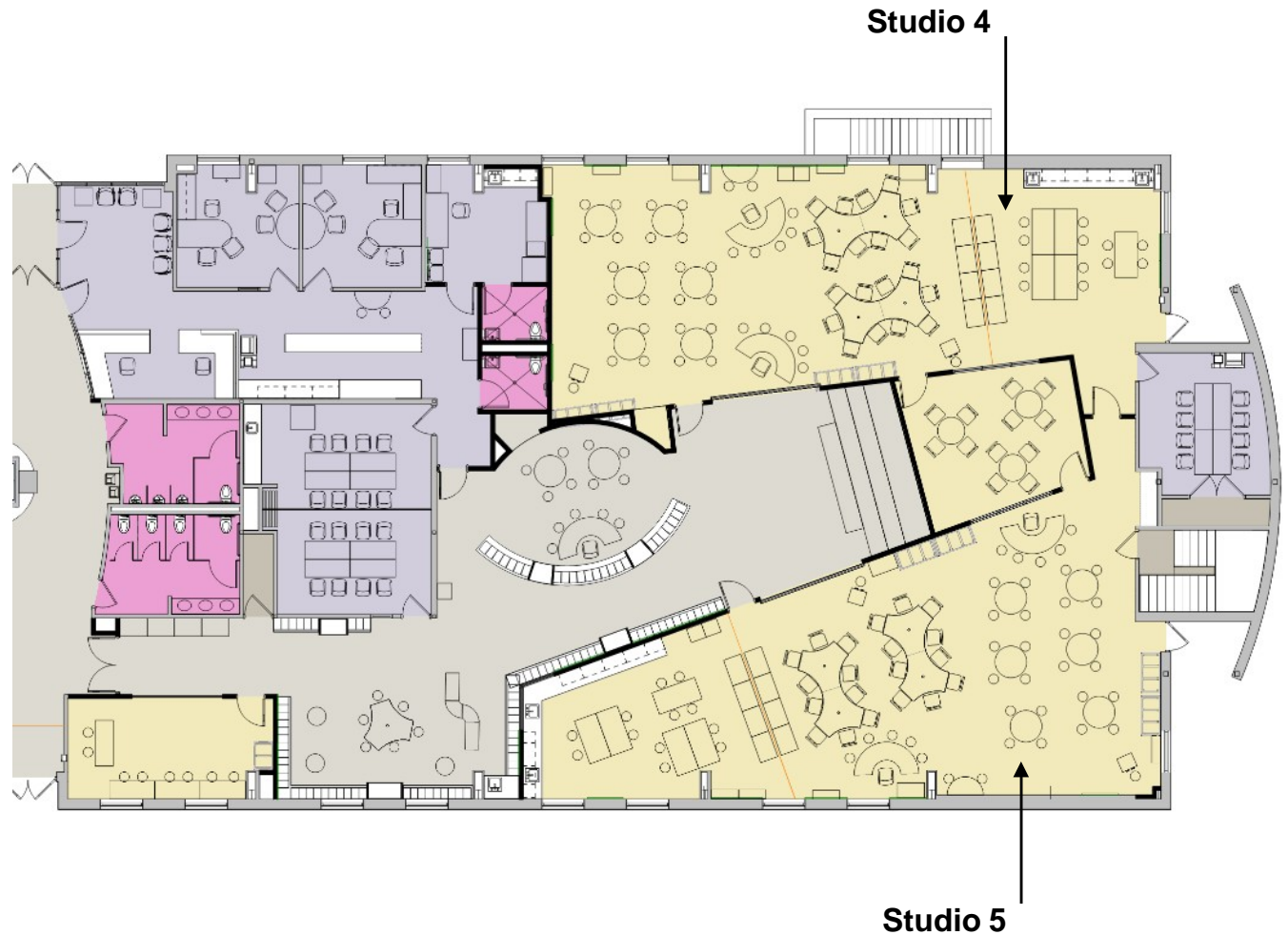


COMMUNITY ENVIRONMENT:

Empowering Creativity + Innovation

EPiC Elementary in Liberty Public Schools, Missouri is an innovative, personalized, project-based learning community infused with technology designed to INSPIRE learners to be CREATIVE and THINK BIG! Learners use REAL tools and REAL materials to collaboratively construct REAL world applications of their knowledge. Our learning environment focuses on three areas for all learners: Equipping learners, engaging communities, and empowering creativity.

EPiC provides a learning environment where learners, families, educators, and experts are fully engaged in authentic learning experiences designed to inspire kids.





99 COLLABORATION MEETINGS WITH LEADERSHIP & THE COMMUNITY

Our team had more than 99 meetings with school district administration, staff and community members during pre-design phases in order to understand fully how they needed the space to be used effectively.

DESIGN VISION + GOALS

We design every project first in words. Our design process provides mutually-agreed upon goals that the community understands and owns because it understands. These goals are supported by the design of each space throughout the entire project and tie back to the strategies.

In the spring of 2013, Liberty Public Schools and our team began exploring possibilities for re-imagining education. Creativity is a huge driving force in the economics of the future, but it was important for us to look at key issues, including: where in the existing current educational system are we allowing the time and space for creativity? When we walked into our classrooms, did we see a difference between the 1980s and today's classroom? Were our learners dialing down when they entered school? And, if creativity really is a key driver of the economy, what skills do our learners need to be successful? From this effort, the school formed a 20/20 Vision Innovations Team comprised of administrators, teachers, parents, and board members and this team began seeking answers to these questions. This team crossed the country and visited highly successful, innovative schools. It tapped into experts, read research and investigated different school models. Ultimately, the team was exposed to and discovered effective environments that empowered learners to learn. This team helped us hone in on the things that we want for our learners and teachers: Real tools. Authentic audiences. Projects with meaning.

Personalized learning. As our team began to assimilate what we had learned, we began to reimagine education for our students in Liberty. The question arose: How could we step outside the box and incorporate our new learning to create a different kind of school?

EPiC is not just a school, but rather an idea, a philosophy, a journey for every person.

“Every Person Inspired to Create, hence the acronym, EPiC, was born. EPiC is not just a school, but rather an idea, a philosophy, a journey for every person. So what does that look like in a school? How will we infuse this idea into each and every day? We believe that children learn in different ways and at different paces. Moreover, we also believe it is essential that all our learners are engaged at a deep level of learning. And we know that learning becomes real when students are able to take their learning beyond the classroom walls and engage with parents and community experts.

EPiC re-imagines education by encouraging the in-depth exploration of topics as students participate in the adventures of learning. Our learners apply their new knowledge by creating and exhibiting their own learning to multiple audiences. Learners engage in daily personalized learning--learning at their own level, leveraging the power of quality adaptive technology platforms and learner voice and choice. Through project-based learning and dynamic teacher instruction, EPiC learners will explore real challenges and create solutions and share in front of authentic audiences.



EMPOWERING INDIVIDUAL LEARNING STYLES

Empower Creativity: EPiC provides a learning environment where students discover, embrace, and integrate authentic learning experiences to create and design real-world applications of their knowledge.

Equip Students: EPiC provides a learning environment through a personalized education where learners become collaborators, critical and creative thinkers, and communicators.



Before: Professional Library



Before: District Office Admin. Center



Before: District Office Admin. Center



After: 3rd Grade Classroom



After: 4th + 5th Grade Collaborative Area



After: 4th + 5th Grade Collaborative Area

COMMUNITY ENVIRONMENT:

Adding Value and Impacting Learning by Re-purposing Space + Using Less Square Footage

“You took the time to capture the vision and communicate what you were doing to support it. The board, teachers and the community are happy with the results.”

—Dr. Jeremy Tucker, Superintendent.



EPiC Elementary 3rd Grade Area



EPiC Elementary 4th + 5th Grade Individual Area



EPiC Elementary 4th + 5th Grade Individual Area



EPiC Elementary 4th + 5th Grade Individual Area

LEARNING ENVIRONMENT: Empowering Creativity with Real Tools

Our goal was to ensure that learning happens all the time...anywhere. EPiC's learning environment includes 1:1 iPads, flexible learning spaces, community partnerships, personalized learning paths, and real world work. To deepen that experience for all learners, each studio has created a unique learning lens within our larger learning community.

Studio K: We are Builders

Studio 1: We are Leaders

Studio 2: We are Storytellers

Studio 3: We are Connectors

Studio 4: We are Changemakers

Studio 5: We are Designers

The school's goal for all learners to become expert learners and as a part of this community they have the opportunity to be active in their own learning process. Children seek to understand how they learn best and begin to design own learning opportunities, scaffolding experiences to provide purpose and drive for learning.

LEARNING ENVIRONMENT: Personalized Learning Model.

Epic Elementary is on a journey to inspire change in education, encouraging educators to re-think, re-frame and re-imagine education. The teachers and learners are a catalyst to help people SEE that change is GOOD. Matching the learners experience to the outside world is necessary and ENGAGING the learner is IMPERATIVE! We believe we can no longer deliver education the same way that we did yesterday, as learners need to experience their learning at their own pace with their talents.



EPiC Elementary 4th Grade Learning Lab



EPiC Elementary 5th Grade Learning Lab



EPiC Elementary 4th + 5th Grade Collaborative Area

FLEXIBLE TEACHING + COLLABORATIVE SPACES: Helping Students Find Their Individual Strengths

For years, the school district made students sit in a seat and use one model to solve fake challenges. But this did not set up learners for success. If we are truly preparing our learners to be successful in life for now and the future, we need to allow them to develop their strengths in a personalized way.



*EPiC Elementary 3rd Grade Small Group +
Individual Learning and Collaborative Area*

LEARNING ENVIRONMENT: Personalized Learning Model

As we harness the power of technology in a learner-facilitated environment, personalized learning permeates our everyday. Developing a personalized mindset is definitely a learning continuum for our lead learners at EPiC. We know that personalized environment is optimal for our learners; we are still growing as lead learners in that direction. Depending on the time of the day and the content, you can see personalization, differentiation and individualization. Our school is becoming a transformative place for both the teacher and the learners. As learners are able to participate in more personalized learning opportunities, they desire to have a more innovative personalized learning environment. The learners experience success and are able to show their learning through their strengths.

Learning Modalities Used Throughout EPiC Elementary:

- Independent Study
- Peer Tutoring
- Small Group Collaboration (2-6)
- One-on-One Teacher + Student
- Project Based
- Technology Base Learning Distance
- Research via the Internet
- Student Presentations
- Performance + Music based
- Seminar Style Instruction
- Naturalist Learning
- Social + Emotional Learning
- Art-based Learning
- Storytelling (floor seating)
- Hands on Learning



PHYSICAL ENVIRONMENT: Creating Wow Moments

Learners are able to talk using academic and expert vocabulary, taking information and transforming it in more complex ways in the context of the real world. Learners of all levels are no longer isolated or defined by their inefficiencies or efficiencies, but rather are able to follow personalized pathways for learning.



EPiC Elementary 2nd Grade Learning Lab



*EPiC Elementary 4th + 5th
Grade Individual Cave Space*



EPiC Elementary 4th + 5th Grade Individual Cave Space

PHYSICAL ENVIRONMENT: Changing Mindsets

We have the ability to transform education as we know it, with every person who is a part of EPiC. We are changing mindsets. Learners embrace the growth mindset -- "I can do it!"

There is no ceiling on my learning. I can show my learning in a way that is best for me. "Our challenge was to do much more, with much less. As programming and curriculum writing happened simultaneously, it became clear to everyone that we needed more than the original scope of only new carpet and paint. We needed flexible, multi-purpose environments to support the vision.



EPiC Elementary 4th + 5th Grade Collaborative Area

PHYSICAL ENVIRONMENT: Materials

With the tightest schedule and budget of all the Liberty bond projects, the team re-used everything they could to stretch the dollars. Much of the casework is reused and all doors and frames were cataloged and re-used to keep the project as efficient as possible. Existing restrooms were left untouched and the only exterior work completed was reworking the parking lot for parent drop off and some play equipment.





PHYSICAL ENVIRONMENT: Graphics

EPiC provides a learning environment where learners, families, educators, and experts are fully engaged in authentic learning experiences designed to inspire kids. Hands-on learning was the key design rationale. As well, the school wanted promote creativity and the arts.

EPiC Elementary Welcome Area



PHYSICAL ENVIRONMENT: Graphics

Thought-provoking learning tools, such as text and graphics were incorporated into the design and placed throughout the new building to reinforce the mission and vision and were used to help enhance the focus on creativity, collaboration and inspire curiosity. It was based off of the EPIc logo we designed. Innovative and inspiring imagery to promote hands-on learning.

PLANNING: Challenges We Identified Together With the School District

Our team was involved in bi-weekly construction meetings, in charge of punch lists and we specified and managed furniture installations up until the day the school opened. Our one-year warranty is scheduled for July 2015.



Those involved in the planning included:

- Dr. John Jungman, Former Superintendent
- Carol Embree, Former CFO
- Board of Education
- Dr. Schmitz
- Top Teaching Staff
- Design & Construction Team

“Repurposing space is always something that intrigues me,” said Steve Anderson, Liberty Public Schools’ Director of Operations. “Knowing that we needed to rethink the square footage per student, we’re glad you were able to explore possibilities”

Liberty's District leadership understands this should not be viewed as a challenge to our success but instead as a new opportunity for growth and further success!



Expectations of Liberty Schools are always high Regardless of the size of the challenge, this does not change.

Maintaining our past success is not good enough...We need to grow Liberty to be even better!



PLANNING: Additional Challenges We Identified Together With the School District

Liberty School District wanted to ensure that the district did everything in its power to ensure an effective and sustainable school system. A part of this planning featured the following: (1) Guarantee students are prepared for the future when they graduate; (2) Recruit, hire, develop and retain high quality educators; (3) Use space, time and technology in effective and efficient ways so we can focus resources on high quality educators and support staff.

Our design team supported these goals and curriculum choices by meeting frequently with individual instructors to ensure we were supporting their every dream in the learning spaces.

PLANNING:

District Challenged Us to Help it Enhance Financial Stability. This Drove A Key Decision to Lower the Square Footage Per Student.

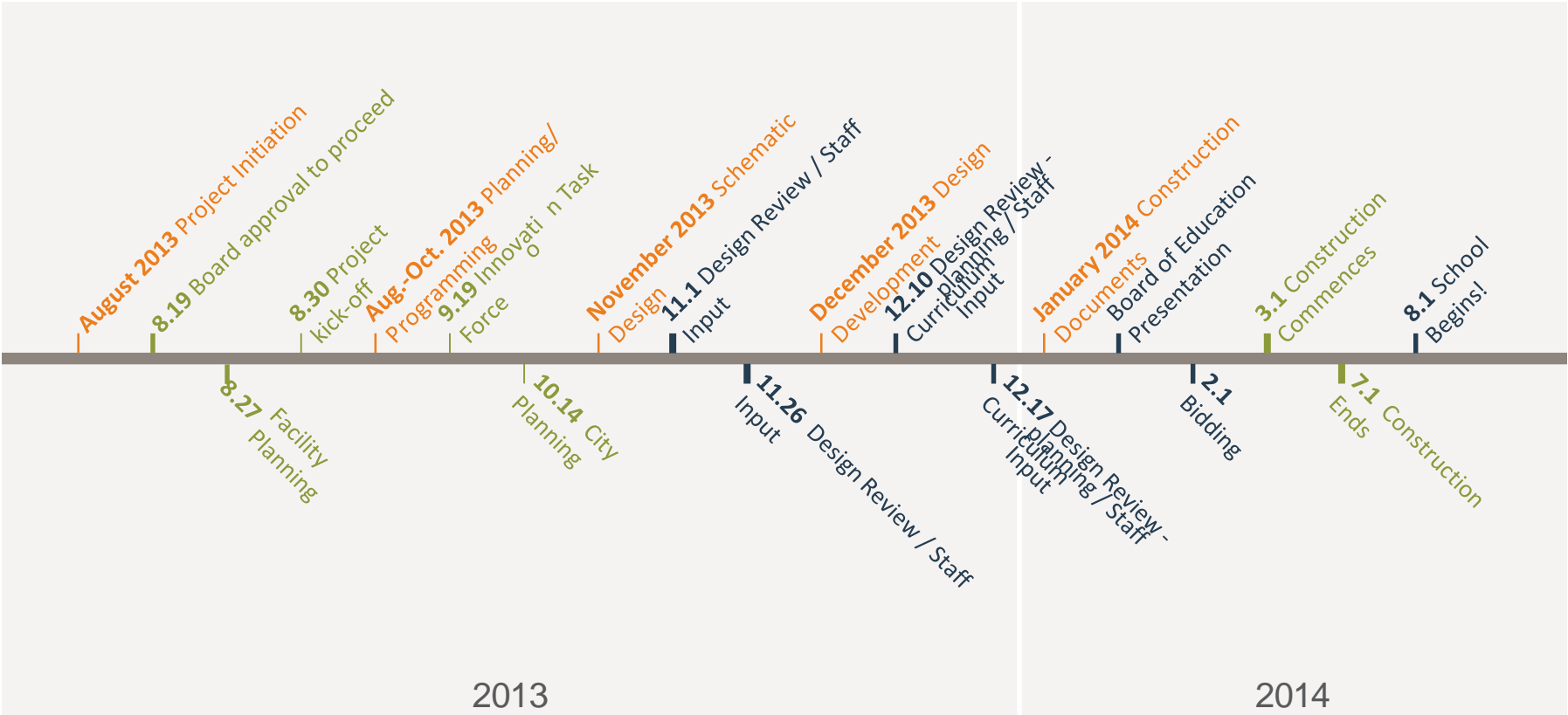
Our planning effort was a global effort that included EPiC and 8 other projects designed to do more with less and encourage educational and operational efficiencies throughout out the district while providing customized learning.



Finding a Sustainable Solution



PLANNING: Major Milestones – In a Condensed Project Schedule



- Key Dates
- Design Efforts + Client
- Collaboration Community Engagement

EXHIBITION OF SCHOOL PLANNING AND ARCHITECTURE: Project Data

Submitting Firm	HOLLIS + MILLER ARCHITECTS
Project Role	Architecture + Structural + Interior + Graphic Design Firm
Project Contact	Kirk Horner, AIA
Title	Partner-In-Charge
Address	8205 W. 108th Terrace, Ste. 200
City, State or Province, Country	Overland Park, KS 66210
Phone	913.451.8886
Construction Firm	UNIVERSAL CONSTRUCTION
Project Role	Construction
Project Contact	Archie Smith
Title	Project Manager
Address	11200 W. 79th Street
City, State or Province, Country	Lenexa, KS 66214
Phone	913.342.1150

EXHIBITION OF SCHOOL PLANNING AND ARCHITECTURE: Project Details

Project Name	EPIC ELEMENTARY SCHOOL
City	Liberty
State	Missouri
District Name	Liberty School District
Supt/President	Dr. Jeremy Tucker
Occupancy Date	August 1, 2014
Grades Housed	K-5
Capacity(Students)	300
Site Size (acres)	6 total acres
Gross Area (sq. ft.)	28,800 sq. ft.
Per Occupant(pupil)	93 sq. ft.
gross/net please indicate	

Design and Build?	No
If yes, Total Cost:	
Includes:	
If no,	
Site Development:	\$62,933
Building Construction:	\$198,5737
Fixed Equipment:	20%
Other: Furniture	\$255,633
TOTAL:	\$2,214,303

**THANK
YOU!**

LEIPIC