

# 2015 Exhibition of School Planning and Architecture

## Ballou High School

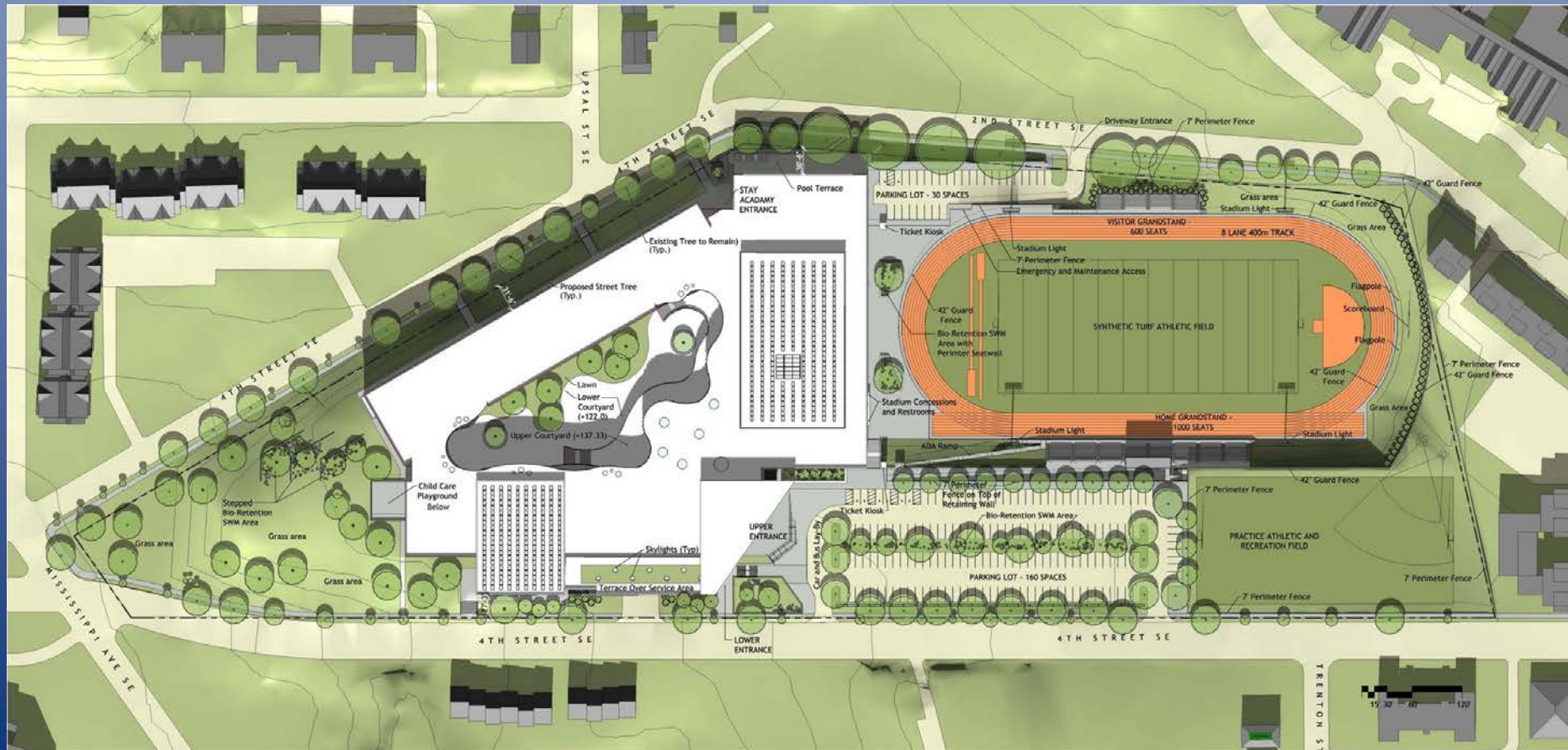
Category: New Construction

District of Columbia Public Schools  
Washington, DC

# Ballou High School

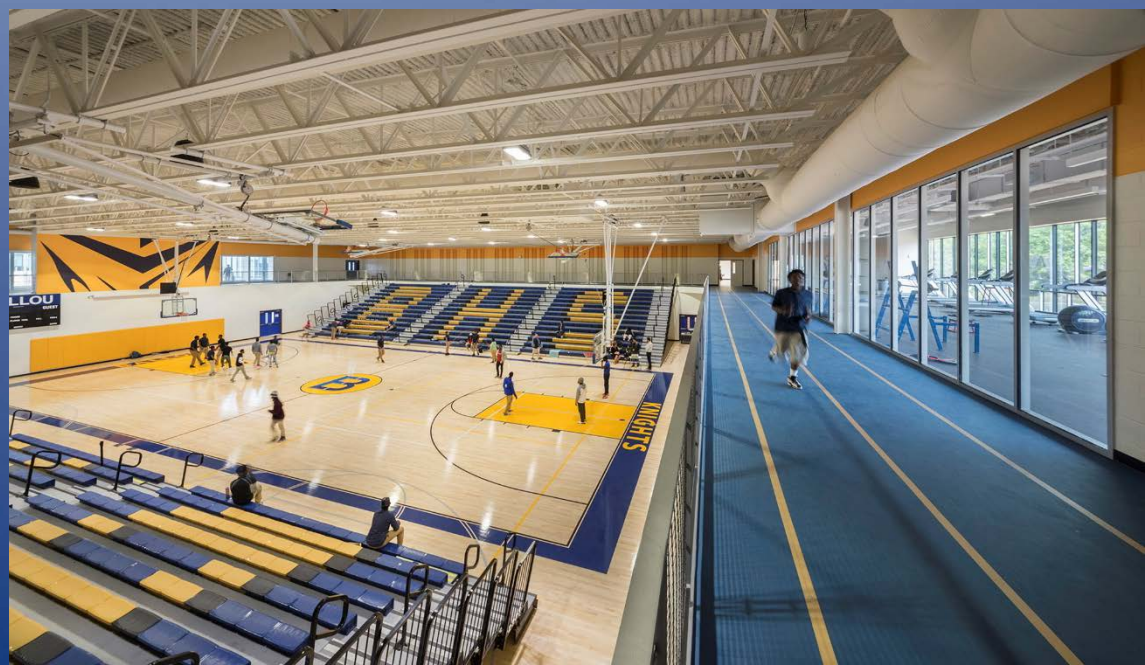


# Ballou High School



## Ballou High School *Aquatics Center, Above* *Fitness Center, Below*

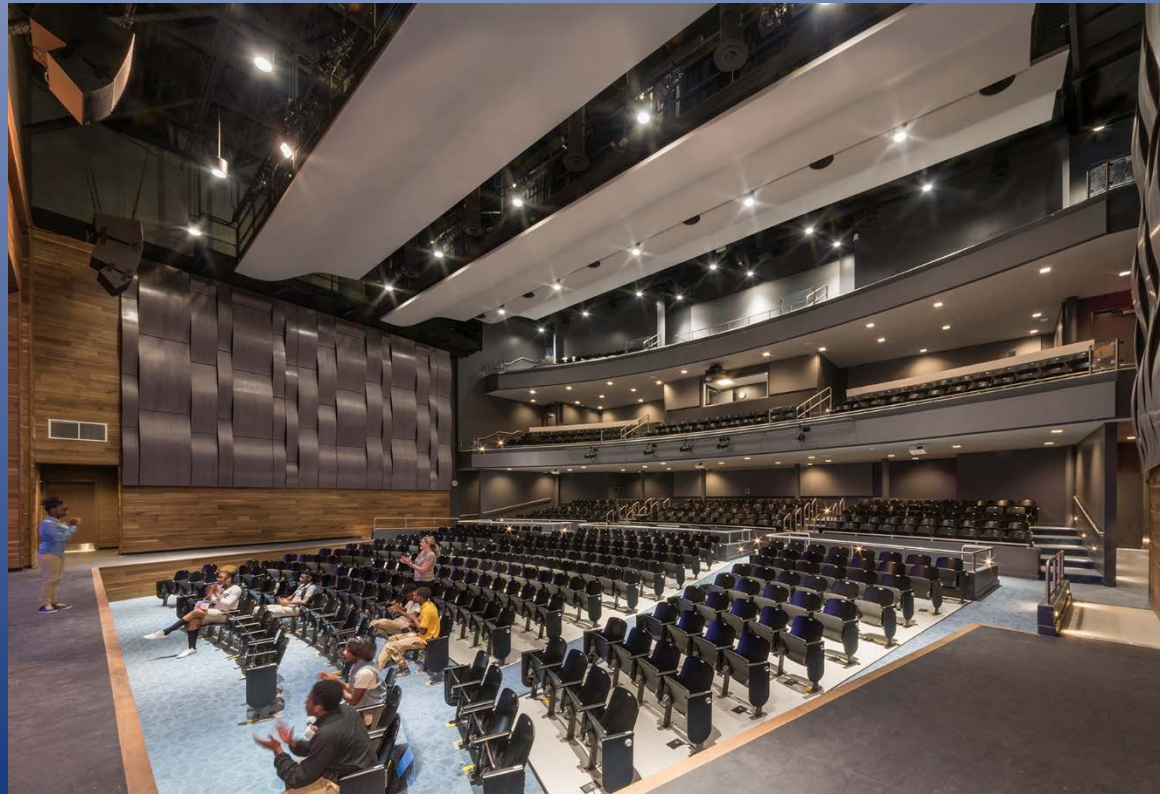
**Community Environment** - Designed to accommodate 1,400 students plus 900 STAY academy students, this new facility needed to meet the needs of its diverse student body while also serving as a community anchor and providing long-awaited upgrades to Ballou's academic areas. The STAY facility and daycare are separate, with their own entrance and associated parking, also serving as a community entrance to the aquatic center and athletic facilities.



## Ballou High School *Band Room, Above Auditorium, Below*

### Community Environment, Continued -

Also contained in the new school is a full-service automotive shop and a rehearsal and recording space for the nationally-recognized marching band. An outdoor stair leads from the entry canopy to the field level of the new stadium. Additionally, a state-of-the-art performing arts theater, athletic and fitness complex, 8-lane swimming pool, health center, day care center and library are all positioned for easy community access.

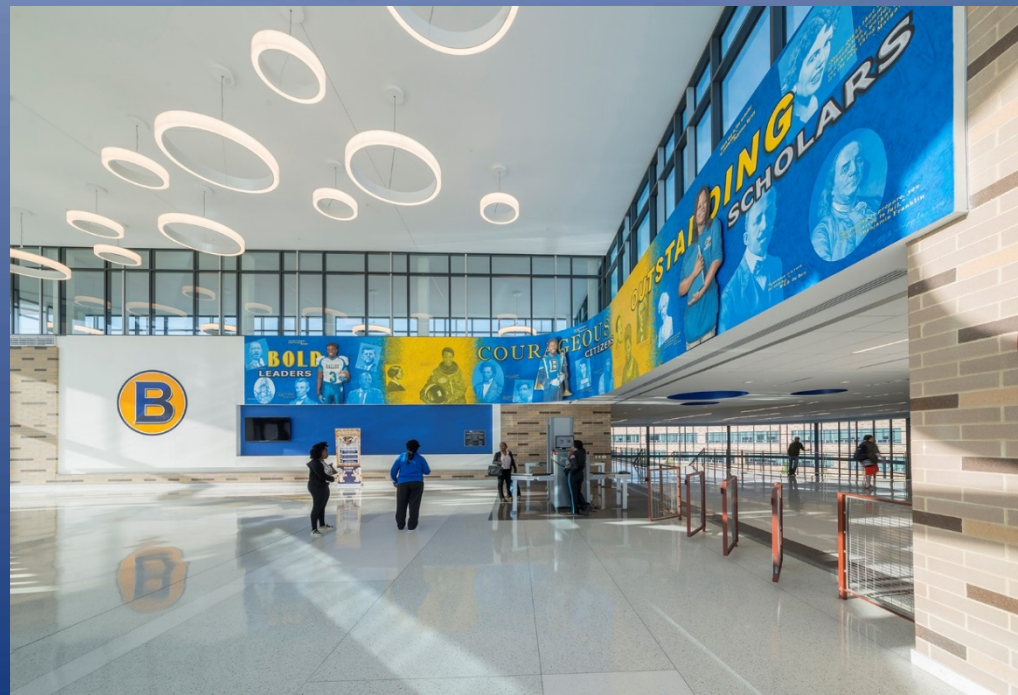


# Ballou High School

## *Entry Pavilion, Above*

## *Lobby, Below*

**Learning Environment** - Interior spaces were designed for a variety of unique purposes while being flexible for the ever-changing demands of education. Beginning with an entrance canopy, students and visitors enter the building into a secure, double height lobby from which a glass, light-filled “Main Street” extends.



# Ballou High School

## *Academic/Arts Hall of Fame, Above Multimedia Center, Below*

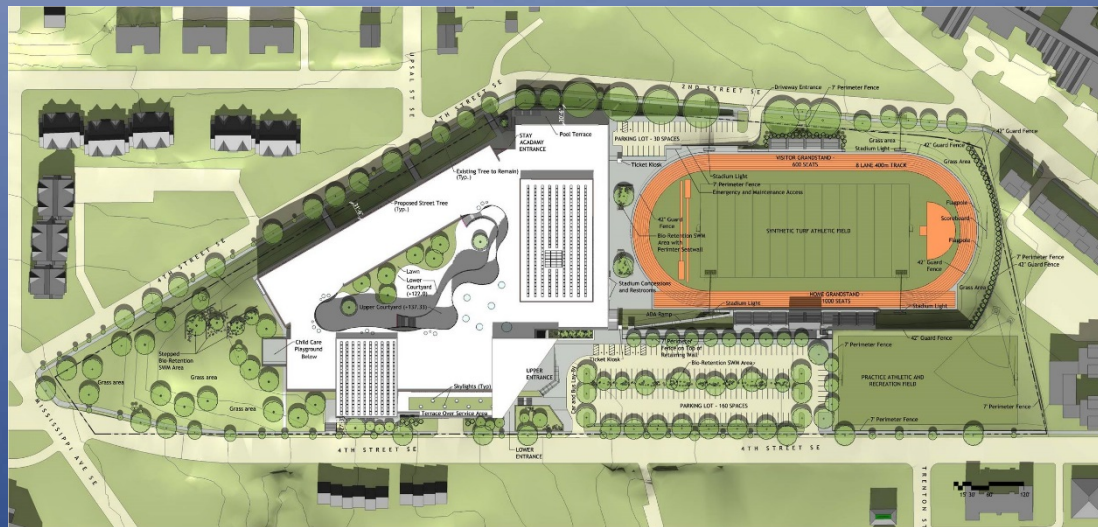
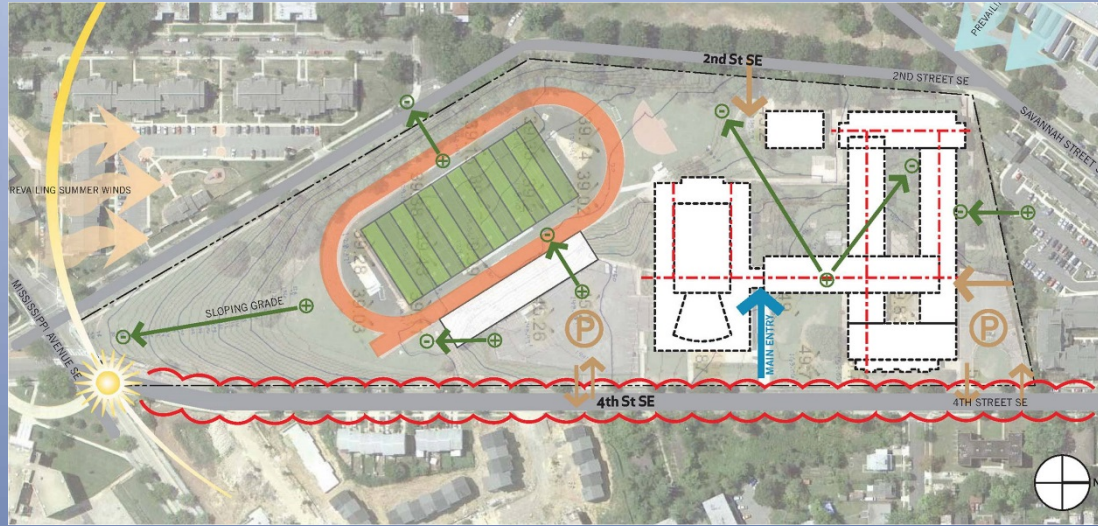
### **Learning Environment, Continued -**

The “Main Street” design features all major programs including arts, athletics, student services, and the cafeteria. This “Main Street” design also incorporates an “academic and arts hall of fame” as well as an “athletic hall of fame.” A spacious, light-filled Multimedia Center at the entrance is available both during and after academic hours for continued learning and community use. Generous common spaces promote collaboration for an interdisciplinary curriculum and collegial learning environment. State-of-the-art new athletic facilities, both indoors and out, were designed to inspire the students and community members alike.



**Existing Site Plan, Above  
New Site Plan, Below**

**Physical Environment** - To minimize costs and disruption of relocating the existing school population, the new school was constructed in 2 phases, first building the new school on the site of the existing football stadium, then demolishing the existing school and constructing the new stadium in its location. The existing site presented both challenges and unique opportunities for the New Ballou High School, but the building design ultimately exploited the steeply sloping grade, creating a variety of entrances including a main north entrance along 4<sup>th</sup> street and a quieter, western entrance along 2<sup>nd</sup> street.



# Ballou High School

## *Courtyard*

### **Physical Environment, Continued -**

Sustainable design is a key feature of the project, designed to achieve a LEED Gold certification or higher. Notable sustainable strategies include exterior shading, high efficiency glazing, photovoltaic arrays, LED lighting, and enhanced lighting controls.



# Ballou High School

## *Entry Pavilion*

**Planning Process** – As part of an understanding of the importance of community engagement, the design team partnered with America Speaks, a Washington, D.C.-based non-profit organization whose mission is to engage citizens in the public decisions that affect their lives. This commitment began in the fall of 2011, during the design competition, with an informal gathering of the architectural team and members of the Congress Heights community to hear input on what was important for the new Ballou. Goals and specifics were discussed for the future of the school and the community's hopes, needs, and aspirations.



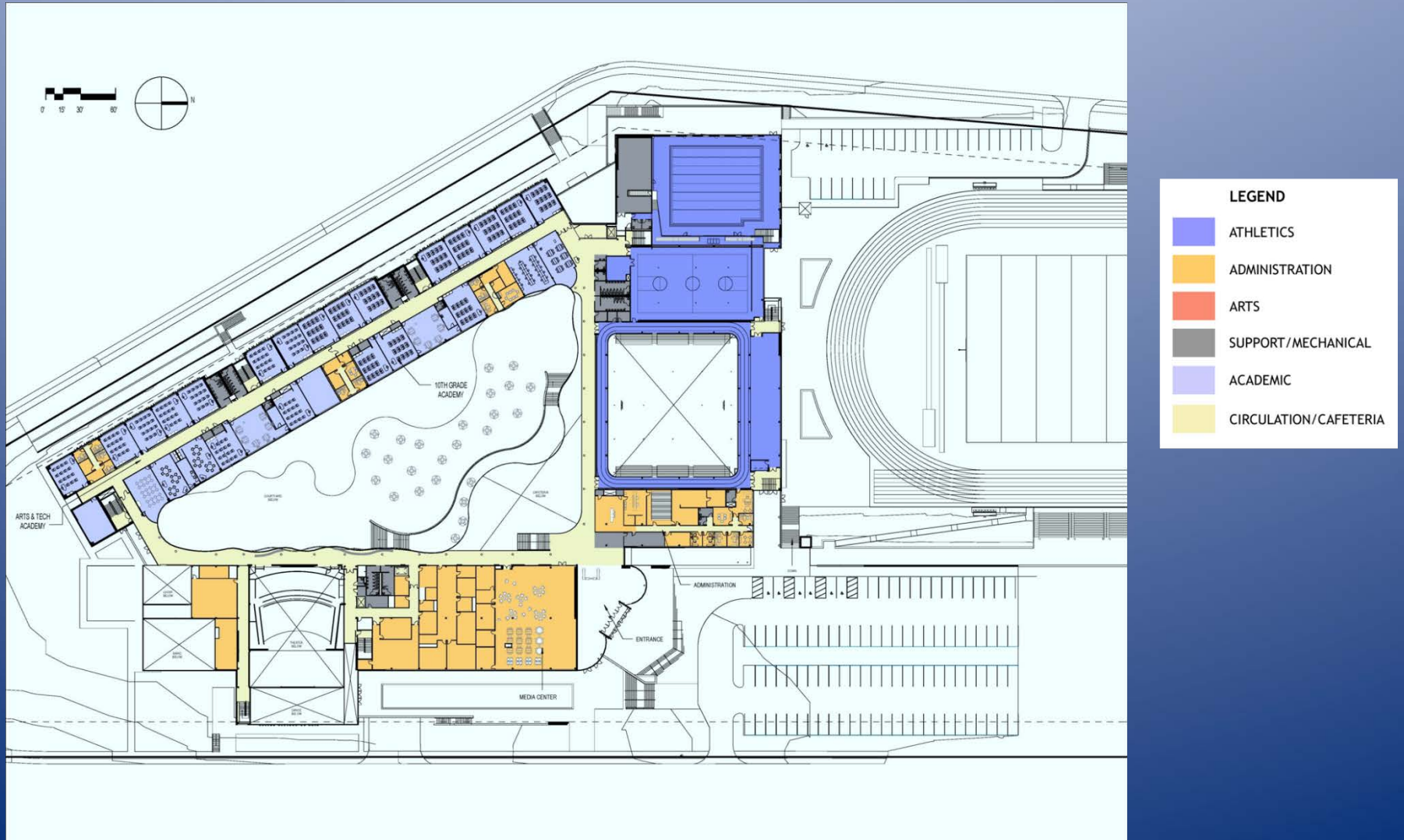
# Wakefield High School

## *Courtyard*

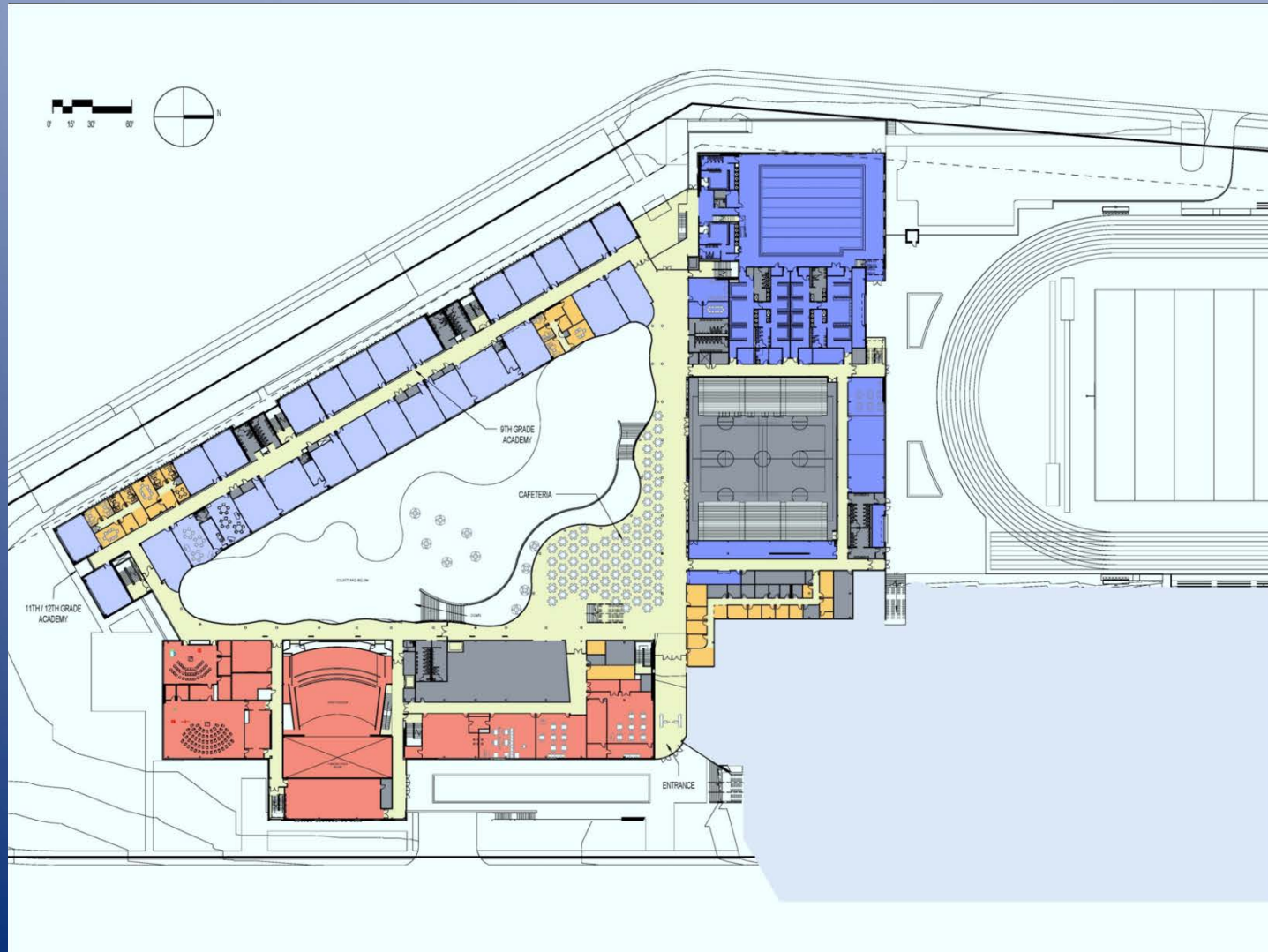
**Planning Process, Continued** – During the project, the community engagement process informed, without impeding, the project delivery schedule—and ultimately helped achieve the best possible outcome for the community. After many meetings, the architectural team understood that the community valued easy and safe access to community amenities, direct access to the athletic facilities, and the future possibility of facility use by UDC community college.



# 3<sup>rd</sup> Floor plan (Entry Level, 4<sup>th</sup> Street Entry)



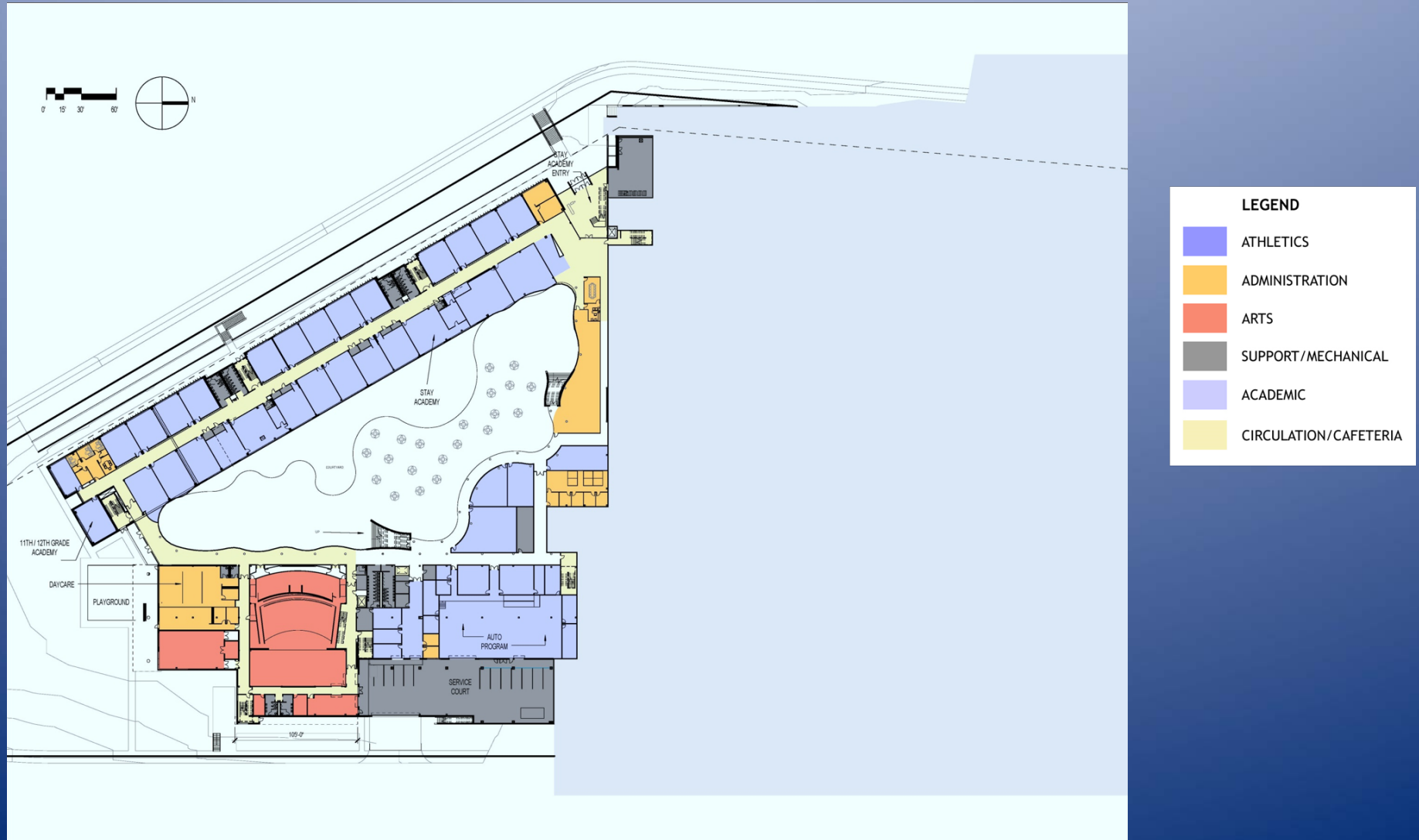
# 2<sup>nd</sup> Floor plan



## LEGEND

- ATHLETICS
- ADMINISTRATION
- ARTS
- SUPPORT/MECHANICAL
- ACADEMIC
- CIRCULATION/CAFETERIA

# 1<sup>st</sup> Floor plan (Courtyard Level, 2<sup>nd</sup> Street Entry)



# Exhibition of School Planning and Architecture

## Project Data

Submitting Firm :	Bowie Gridley Architects
Project Role	Architect/Joint Venture
Project Contact	Calvert S. Bowie
Title	Principal-in-charge
Address	1010 Wisconsin Ave, NW Suite 400
City, State or Province, Country	Washington, DC 20007
Phone	202.337.0888

Joint Partner Firm:	Perkins + Will
Project Role	Architect/Joint Venture
Project Contact	Jerry Johnson and Steve Turckes
Title	Principals, K-12 Education
Address	330 North Wabash Avenue, Suite 3600
City, State or Province, Country	Chicago, IL 60611
Phone	312.755.0770

Other Firm:	N/A
Project Role	N/A
Project Contact	N/A
Title	N/A
Address	N/A
City, State or Province, Country	N/A
Phone	N/A

Construction Firm:	Hess Construction Company
Project Role	Construction Contractor
Project Contact	Todd Ward
Title	Division Vice President
Address	804 West Diamond Avenue, Suite 300
City, State or Province, Country	Gaithersburg, MD 20878
Phone	301.670.9000

# Exhibition of School Planning and Architecture

## Project Details

<b>Project Name</b>	Ballou High School
<b>City</b>	Washington
<b>State</b>	District of Columbia
<b>District Name</b>	District of Columbia Public Schools
<b>Supt/President</b>	Kaya Henderson, Chancellor
<b>Occupancy Date</b>	January 2015
<b>Grades Housed</b>	9-12
<b>Capacity(Students)</b>	1,400 plus 900 STAY academy students
<b>Site Size (acres)</b>	8.38
<b>Gross Area (sq. ft.)</b>	365,000 gsf
<b>Per Occupant(pupil)</b>	158.7 gsf/pupil
<b>gross/net please indicate</b>	
<b>Design and Build?</b>	Yes
<b>If yes, Total Cost:</b>	\$135,000,000
<b>Includes:</b>	
<b>If no,</b>	
<b>Site Development:</b>	
<b>Building Construction:</b>	
<b>Fixed Equipment:</b>	
<b>Other:</b>	
<b>Total:</b>	

# Supporting/Supplemental files/Images



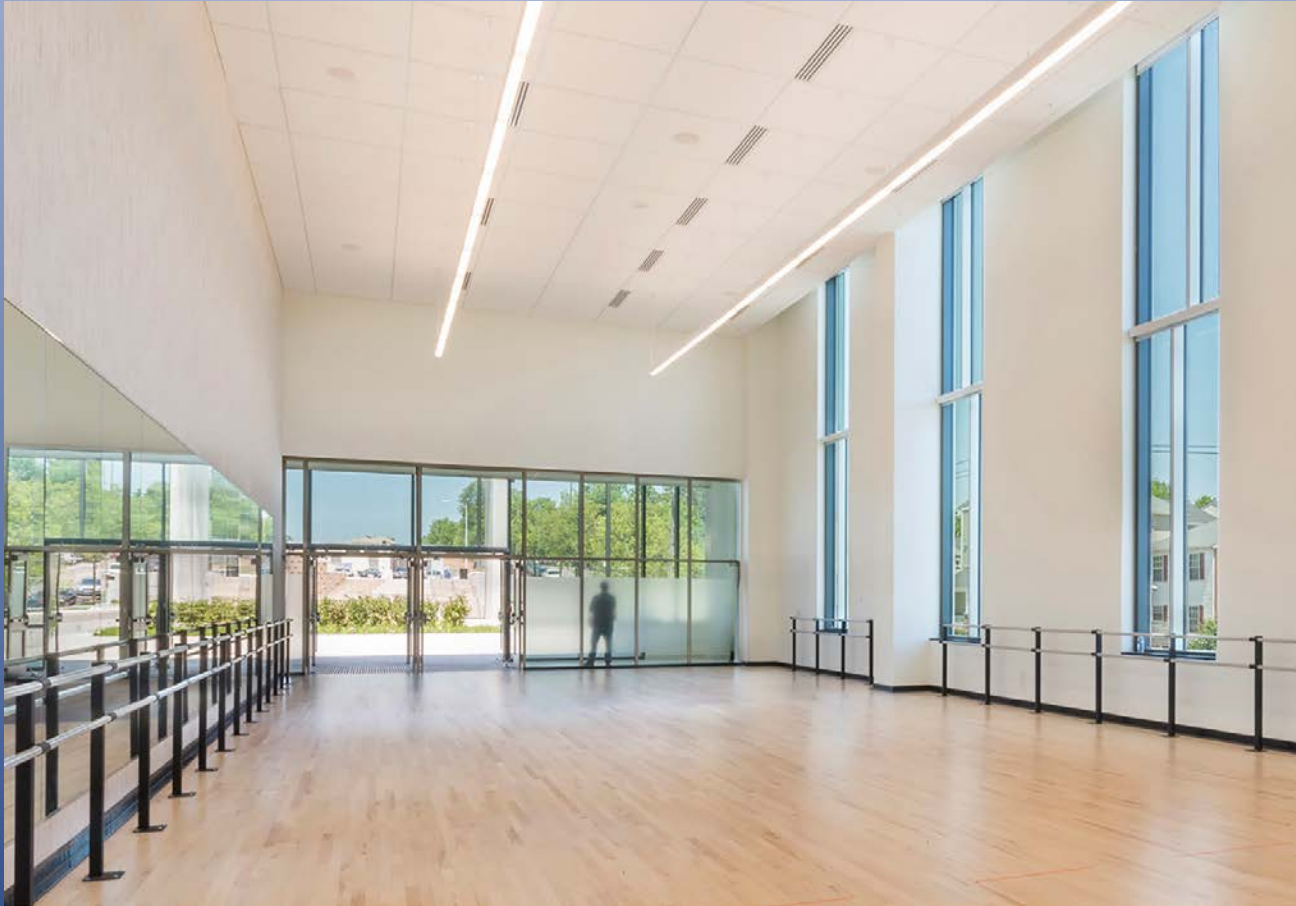
Two-level Cafeteria allows an open meeting area that opens to the adjacent courtyard.

# Supporting/Supplemental files/Images



Science Laboratory

# Supporting/Supplemental files/Images



Dance studio is available for community use

# Supporting/Supplemental files/Images



Interior courtyard allows for a secure meeting area for students