

2014 Exhibition of School Planning and Architecture

Sunnyside Elementary School

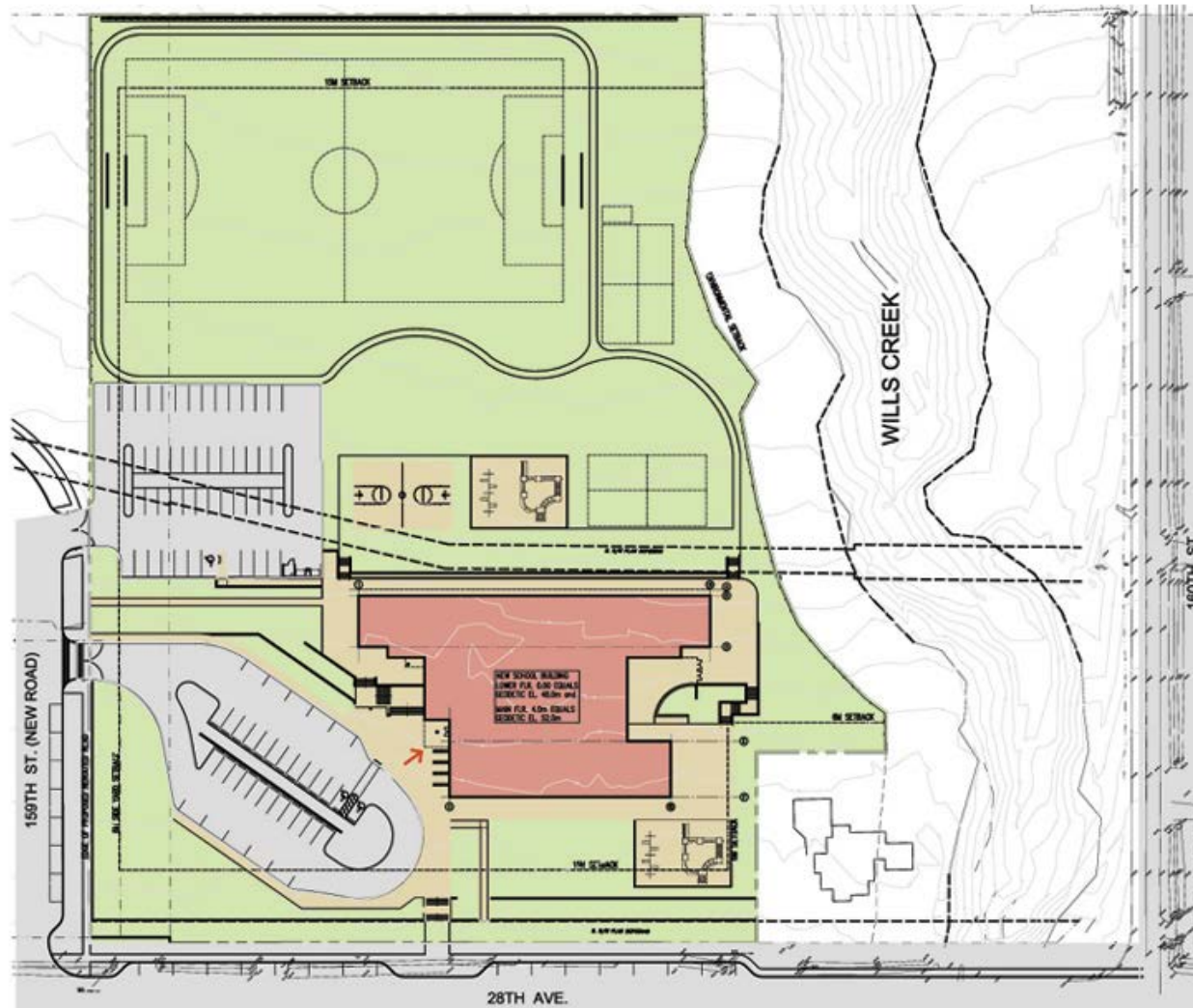
Surrey School District #36

Surrey, BC, Canada

Sunnyside Elementary School



Sunnyside Elementary School



Visual Connection

Community Environment:

At Sunnyside Elementary School (Sunnyside), the central transparent gymnasium concept surfaced in response to the stated need to provide a heart for the many educational streams and the anticipated public use opportunities. The sloping site afforded the team to design a community gathering space in the centre of the facility that is naturally lit, and visually connected to all components of the building. The design sets out to invite user participation through transparency and ease of access. Each of these spaces results in a broader cross section of activities available to all users.



A Space for Everyone

Community Environment:

Sunnyside achieves community goals by allowing the largest volume of space (the gymnasium) to be used as a public gathering space for a broad spectrum of activities. The finished facility has proven to be popular, being used by community arts, cultural, and sports groups. It has been earmarked as a community gathering space in a large developing family neighbourhood.

The light-filled transparent, well ventilated core of the project brings a smile to everybody's face. You always know where you are and almost all destinations are connected by line of sight. Students and staff alike want to be there. The sense of welcome is inspiring.



Learning Happens Here

Learning Environment:

The project includes 19 classrooms, a library, two multi-purpose rooms, a Montessori program, a full day Kindergarten program and a variety of spaces to be shared with the community which are funded by the Ministry of Education's Neighbourhood Learning Centre (NLC) program. The NLC spaces include two Early Learning Education classrooms, a Before and After School Care classroom and a community room that can support a variety of functions by both the community and school.

Sunnyside allows for a multitude of future educational options and is planned for a minimal interruptive expansion, an inevitable plan given the population growth in School District No.36 (SD36).



Classroom with a View

Learning Environment:

One of the challenges of designing Sunnyside was how to incorporate a Montessori program within a traditional curriculum. Montessori classrooms are required to be larger than the Ministry of Education's Area Standards mandate for elementary schools. As a result, the Montessori classrooms were placed on the upper level, benefitting from the classroom stacking concept and natural sloping topography. This created a nice overhang for the lower level classrooms which lead directly to the outdoors. To encourage student interaction from both curriculums, the library, gymnasium and multi-purpose components were built in the centre of the school.



A Place to Learn, A Place to Play

Physical Environment - Sunnyside is a new school designed for 375 students, with the capacity to expand to 500. It replaces the original elementary school that had been a community landmark since 1949.

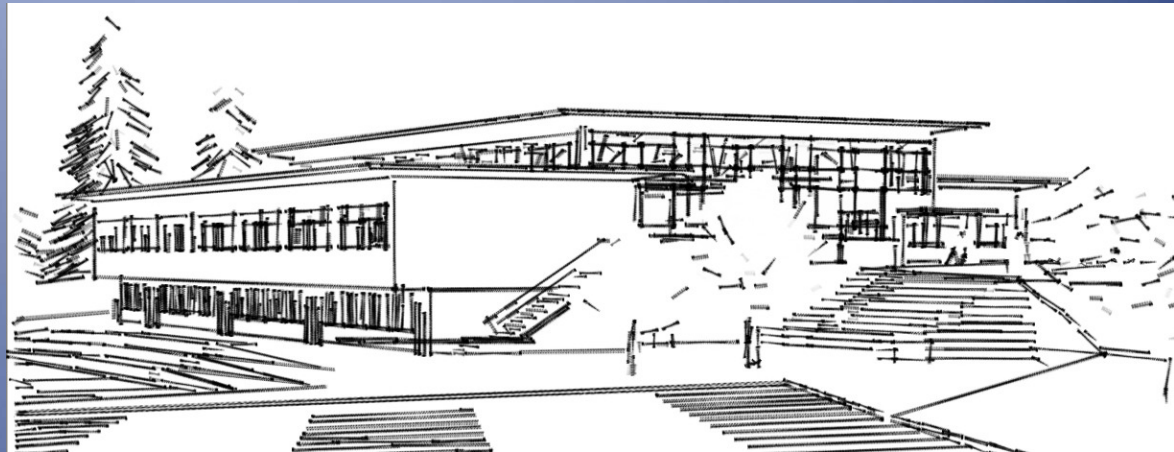
The school was designed to be flooded with natural light. All the classrooms face north and have oversized windows which maximize the natural light. The central gathering space features a clerestory on all four sides which not only floods the space with light but gives the occupants uninterrupted views to the tree tops. Surrounding the gymnasium with a galleria provides tons of light to the corridors which feature a playful floor pattern. Wood paneling finish in the corridors provides warmth to the school, as well as a feature wall where it is finished with a contrasting colour.



North-West Sketch

Physical Environment:

The sloping site also afforded the team to design a community gathering space in the centre of the facility that is naturally lit, and visually connected to all components of the building. The finished facility has proven to be very popular for use by community arts, cultural, and sports groups. It has already been earmarked as a community gathering space in a large developing family neighbourhood.

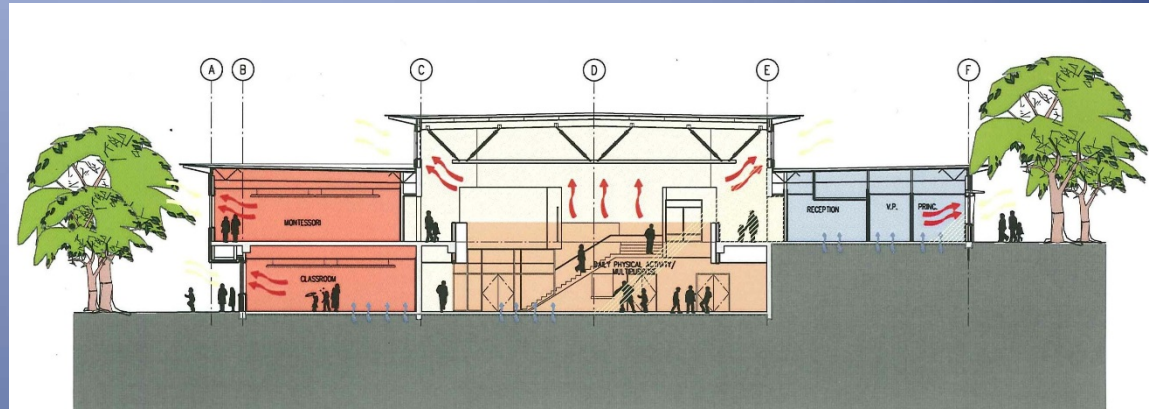


Conceptual Building Section

Planning Process:

Stakeholders for Sunnyside include SD36's Program and Design Committee, the school Principal, Parent Advisory Committee, and various community, cultural and sport user groups. These groups were consulted frequently during the design process. Traffic, site access and safety were objectives identified early in the process and this school delivered on all counts.

There were remarkably few challenges with respect to community acceptance of the new school. Surrey is the fastest growing school district in the Lower Mainland of BC and, by the time Sunnyside opened, it was surrounded by many multi-family residential projects.



Sloping Site

Planning Process:

The sloping site required that the entrance of the school be lower than the fronting street. We took advantage of the southern exposure to develop a stramp consisting of sitting terraces intercepted by a gentle access ramp with affords the opportunity for outdoor use, impromptu performances and waiting space.

Existing conditions included a growing student population in a rapidly developing community and a forward looking Client who was prepared to try something different.

The public process was orchestrated through SD36 and was publicly presented through the Board of Trustees.



Main Floor Plan



Exhibition of School Planning and Architecture

Project Data

Submitting Firm :	Omicron Canada Inc. (project delivered by Grant + Sinclair Architects Ltd. Omicron acquired Grant + Sinclair Architects Ltd. In 2013)
Project Role	Architecture
Project Contact	Paul A. Grant
Title	Architectural Lead
Address	Fifth Floor, Three Bentall Centre, 595 Burrard Street
City, State or Province, Country	Vancouver, BC Canada
Phone	1 877 632 3350
Joint Partner Firm:	
Project Role	
Project Contact	
Title	
Address	
City, State or Province, Country	
Phone	
Other Firm:	
Project Role	
Project Contact	
Title	
Address	
City, State or Province, Country	
Phone	
Construction Firm:	Boygues Building Canada
Project Role	Contractor
Project Contact	Ray Burns
Title	Project Manager
Address	Suite 1060-1500 West Georgia Street
City, State or Province, Country	Vancouver, BC Canada
Phone	604 688 9255

Exhibition of School Planning and Architecture

Project Details

Project Name	Sunnyside Elementary School
City	Surrey
State	British Columbia
District Name	Surrey School District #36
Supt/President	Dr. Jordan Tinney
Occupancy Date	August 2013
Grades Housed	Kindergarten to Grade 7
Capacity(Students)	500
Site Size (acres)	6.4 acres
Gross Area (sq. ft.)	51,020 sq.ft.
Per Occupant(pupil)	93 sq.ft.
gross/net please indicate	51,020 sq.ft. / 7,525 sq.ft.
Design and Build?	
If yes, Total Cost:	
Includes:	
If no,	
Site Development:	\$2.6 million
Building Construction:	\$10.2 million
Fixed Equipment:	\$460,000
Other:	
Total:	\$13,260,000

Supporting/Supplemental Files/Images



Student pick up area

Supporting/Supplemental Files/Images



Main Entrance