

2014 Exhibition of School Planning and Architecture

P.K. Yonge Developmental Research Middle-High School

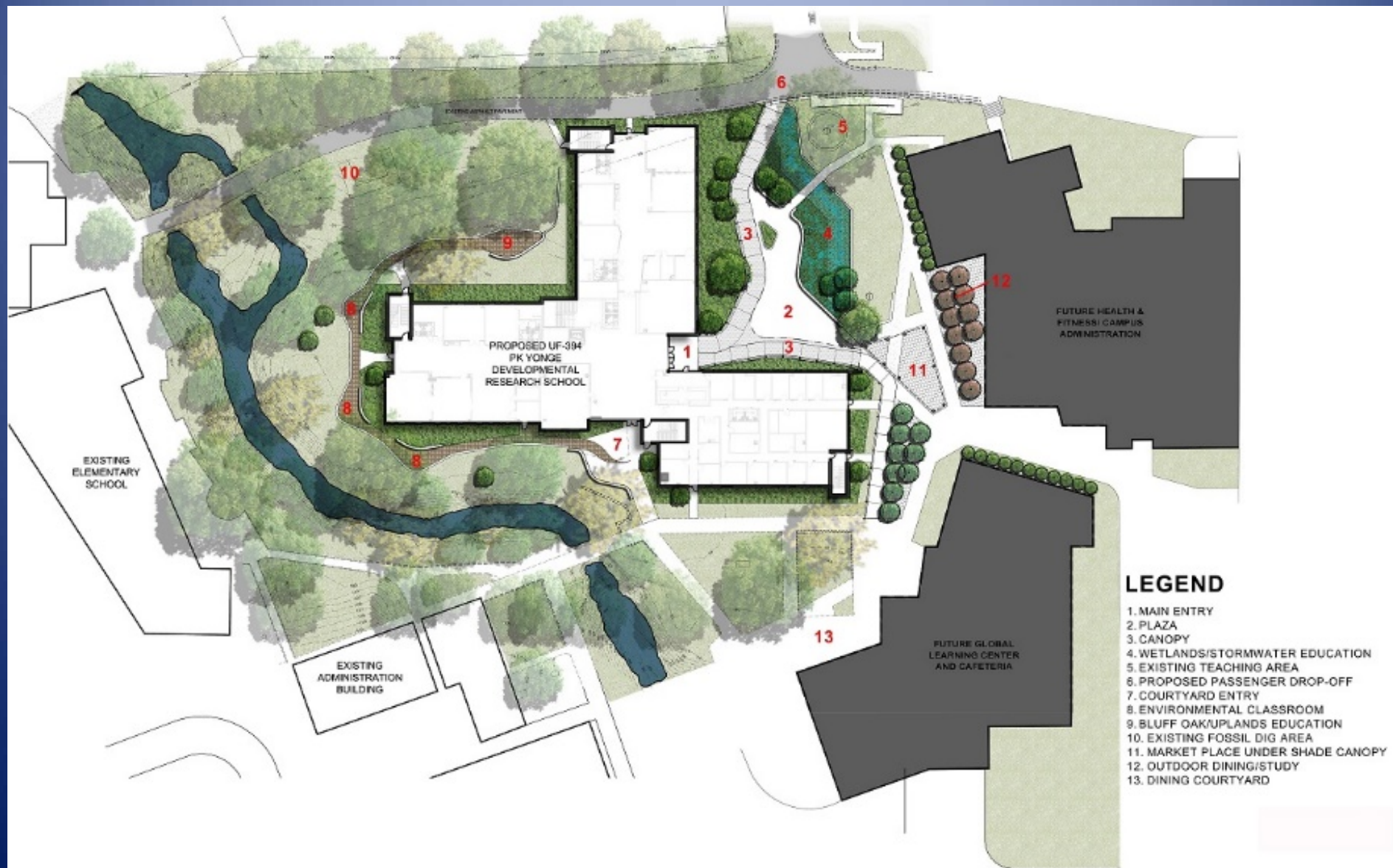
University of Florida
Gainesville, FL



P.K. Yonge Developmental Research Middle-High School



P.K. Yonge Developmental Research Middle-High School Site Plan



Community Environment

The P.K. Yonge Developmental Research School is a public K-12 school that is affiliated with the University of Florida's College of Education. The school's focus is on developing innovative educational programs that create an optimized learning environment for every student.

In order to align with the school's mission and vision, P.K. Yonge embarked on a phased replacement of their existing facilities that will transform the facilities into a modern campus and a student focused 21st Century Learning Environment.

This model promotes interaction among school students and faculty that results in creating a sense of community and ownership.



Common Space

The design of the new, Middle-High School Building creates a student centered learning environment that is flexible, technology-rich and provides opportunities for collaboration to occur everywhere.

As the approach to successful education design evolves, the focus of the learning environment has shifted from the teacher driven model of the past to a student centered model that will carry students into the future.



Common Space-First Floor



Common Space-Second Floor

Learning Environment

The academic learning neighborhoods at P.K. Yonge are a unique and innovative feature of this 21st century design. Each learning neighborhood includes STEM (Science, Technology, Engineering & Math) labs, open collaboration areas, learning studios, distance learning labs, teacher planning/collaboration and small group break-out spaces.

The new middle-high school building for P.K. Yonge embraces this evolution by creating learning neighborhoods in which no two spaces are the same size. This innovative design feature creates a variety of spaces that support different modes of learning.



Educational Neighborhood

At P.K. Yonge, a team of teachers have ownership of a learning neighborhood. Inside each neighborhood is a teacher planning space, with windows looking out into the collaboration area, where the team of teachers can plan and determine space usage based on the teachings of that day.

The result is a collaborative and inquiry driven learning environment, enhanced by state-of-the-art technology that can support a variety of teaching methods within each learning community.



Physical Environment

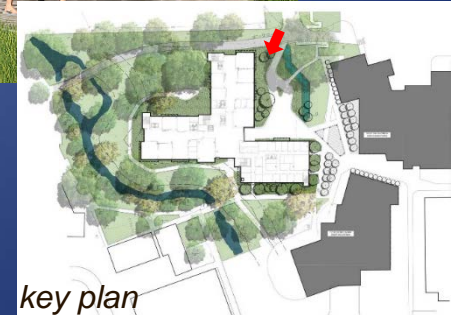
The design of the new, 3-story Middle-High School Building aligns with the campus master plan.

Each of the grade level neighborhoods are different. The variety of spaces, in different sizes and configurations, provides teachers with the versatility to teach in a space that is more conducive to the curriculum being taught each day. This approach is in stark contrast to that of a traditional school where teachers have ownership of a specific classroom.

In addition to the innovative 21st century learning environment indoors, the school is situated on a 31-acre site of both wooded and open terrain that provides opportunities for outdoor learning.



Exterior View



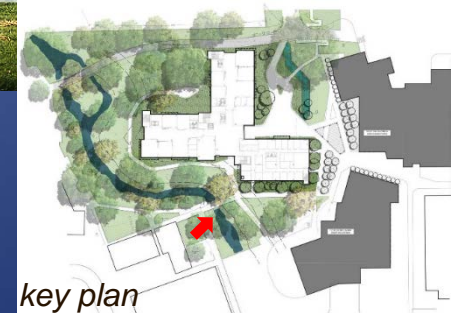
key plan

The school has a direct connection with Tumblin Creek which runs west to east through the campus and is a protected wetland and a major focal point of the site.

The site design for the building incorporates a meandering pathway and outdoor seating wall that allows students to engage with the site. The school, which is designed to achieve LEED® Gold, takes advantage of the outdoors by creating teaching opportunities through environmental classrooms, a wetlands / stormwater education area, outdoor classrooms and a fossil dig area.

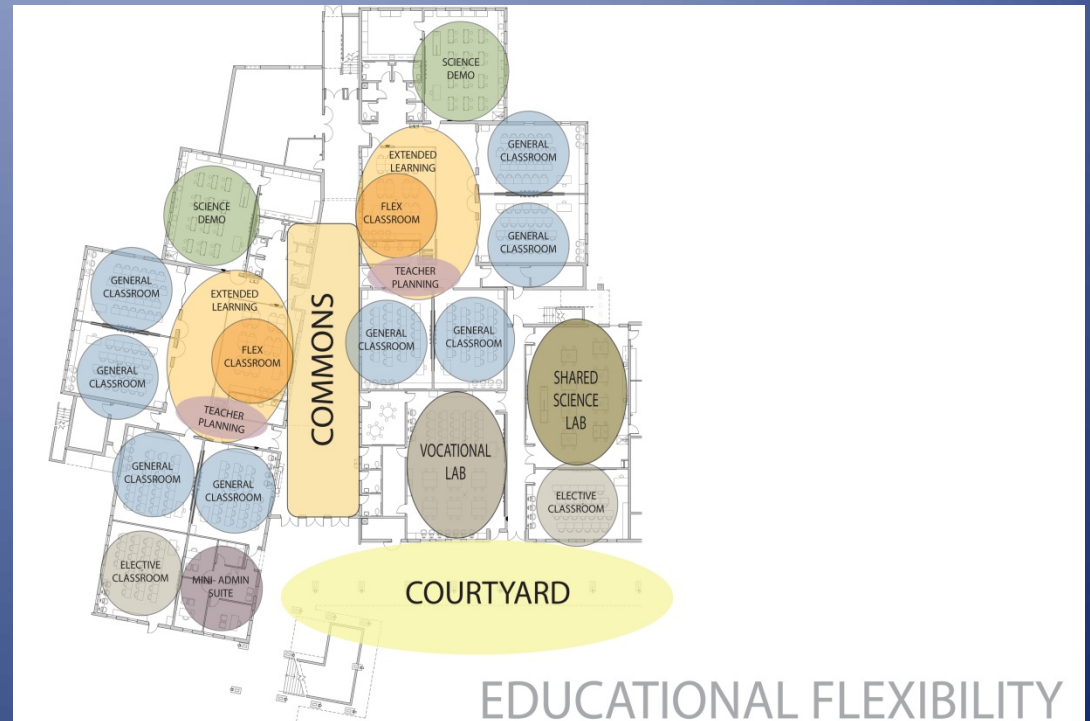


Exterior View facing Tumblin Creek



Planning Process

The design team utilized the online survey tool, Survey Monkey, to create specific questionnaires to help make informed decisions throughout the entire design process. The surveys began with general questions and became more specific based on the design phase to get insight on everything from specific requirements for built-in teaching aids to the instructional methodologies used by each teacher to furniture preferences.



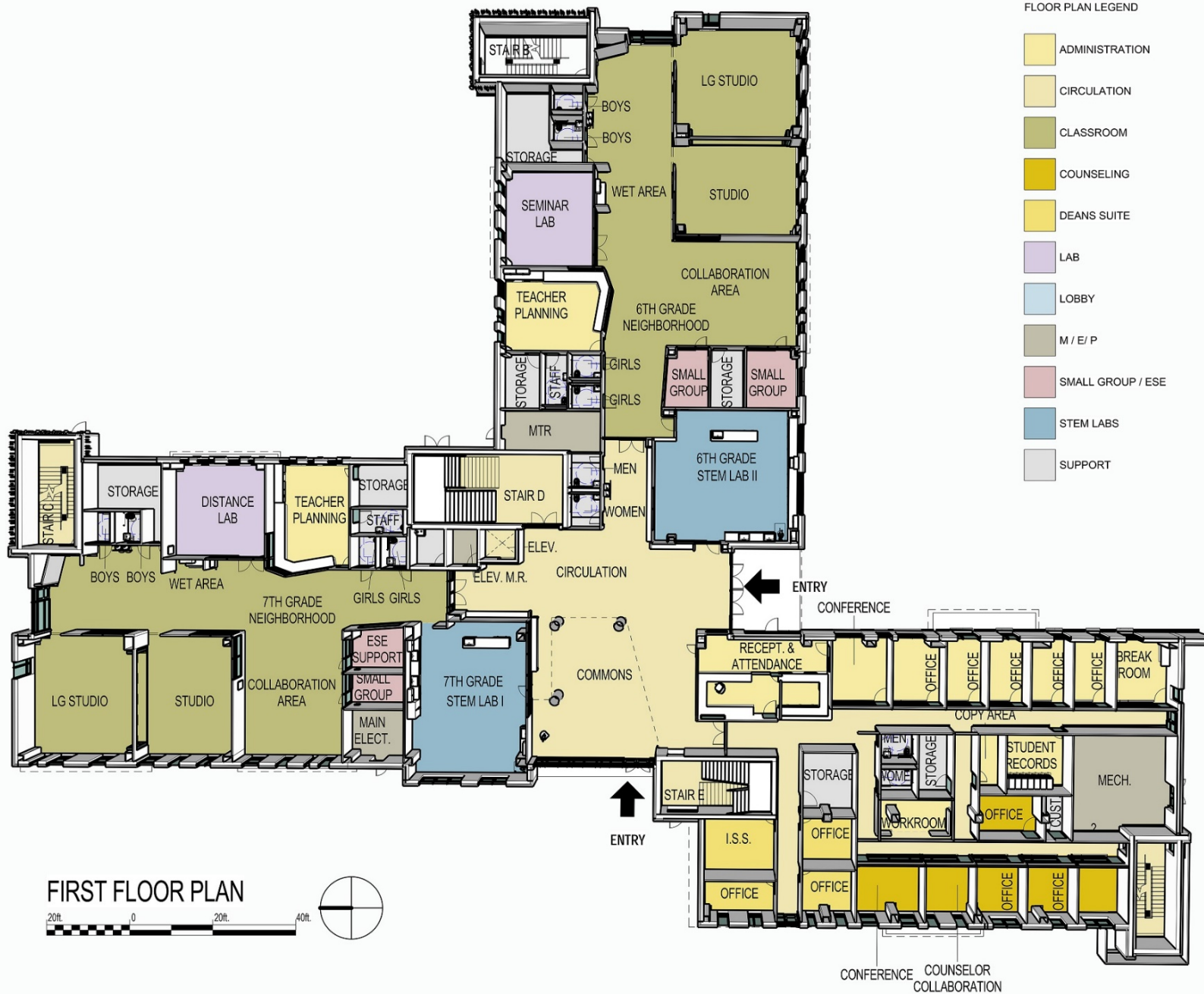
The result of this collaboration has enhanced and refined the initial concepts established in the school's master plan and transformed the school's vision of an optimized learning environment for every student into a reality.



Initial Design Concepts

FLOOR PLAN LEGEND

- ADMINISTRATION
- CIRCULATION
- CLASSROOM
- COUNSELING
- DEANS SUITE
- LAB
- LOBBY
- M / E / P
- SMALL GROUP / ESE
- STEM LABS
- SUPPORT



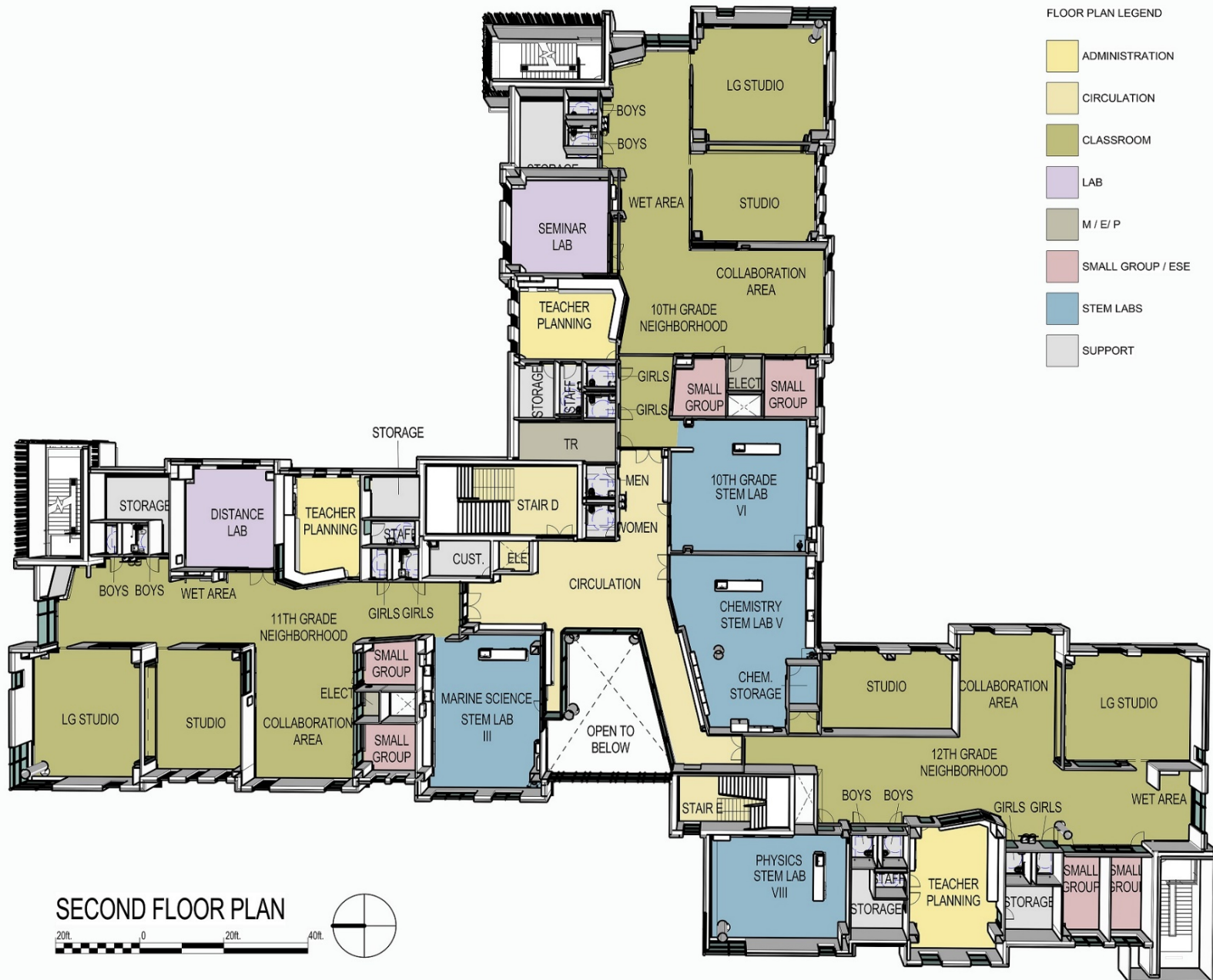
FIRST FLOOR PLAN

20ft. 0 20ft. 40ft.



FLOOR PLAN LEGEND

- ADMINISTRATION
- CIRCULATION
- CLASSROOM
- LAB
- M / E / P
- SMALL GROUP / ESE
- STEM LABS
- SUPPORT



SECOND FLOOR PLAN

20ft. 0 20ft. 40ft.





Exhibition of School Planning and Architecture

Project Data

Submitting Firm :	SchenkelShultz Architecture
Project Role	Architect
Project Contact	Daniel M. Tarczynski, AIA
Title	Partner
Address	200 East Robinson Street, Suite 300
City, State or Province, Country	Orlando, FL. 32801
Phone	407-872-3322

Joint Partner Firm:	
Project Role	N/A
Project Contact	
Title	
Address	
City, State or Province, Country	
Phone	

Other Firm:	
Project Role	N/A
Project Contact	
Title	
Address	
City, State or Province, Country	
Phone	

Construction Firm:	
Project Role	N/A – TBD
Project Contact	
Title	
Address	
City, State or Province, Country	
Phone	

Exhibition of School Planning and Architecture

Project Details

Project Name	P.K. Yonge Developmental Research Middle-High School
City	Gainesville
State	Florida
District Name	University of Florida
Supt/President	Dr. Lynda Hayes
Occupancy Date	TBD – Design completion 2014
Grades Housed	6-12
Capacity(Students)	826 Students
Site Size (acres)	31-acres
Gross Area (sq. ft.)	79,991 SF
Per Occupant(pupil)	96.84 sq./ft.
gross/net please indicate	
Design and Build?	Yes
If yes, Total Cost:	\$18,830,800
Includes:	Land, building, landscaping fees, furniture and equipment
If no,	
Site Development:	
Building Construction:	
Fixed Equipment:	
Other:	
Total:	