

2014 Exhibition of School Planning and Architecture

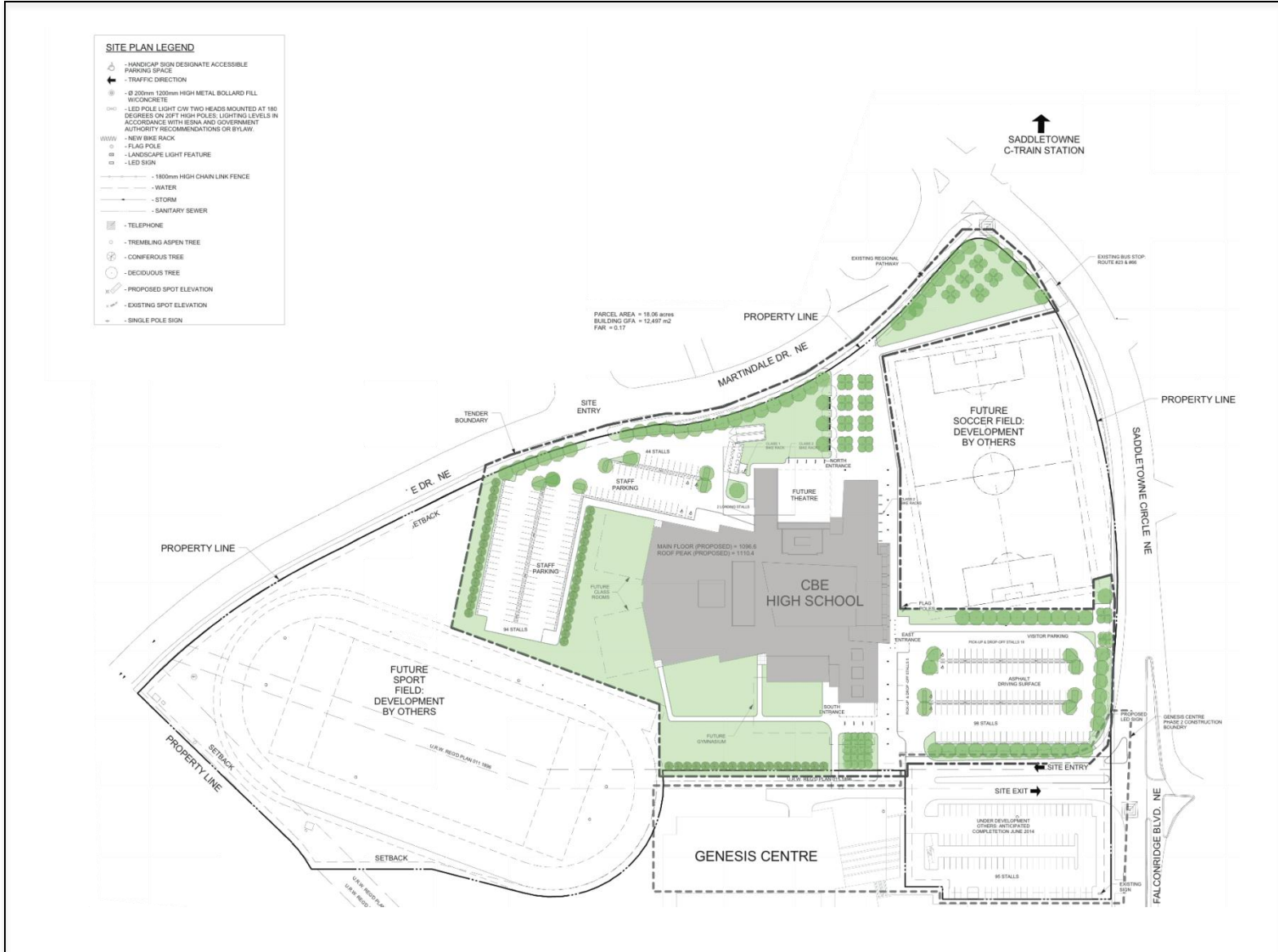
North East Calgary High School

Calgary Board of Education

Calgary, Alberta



North East Calgary High School Site Plan



An innovative development in the Martindale community

The new Northeast High School project is located within the Community of Martindale and faces Martindale Drive to the north and northwest and Falconridge Blvd to the east. Service and vehicular site access is provided from both of these bounding streets.

The site arrangement is largely determined by the relationship with the Genesis Center to the south of the site and the public transportation link with the Saddletowne C-train station to the North. The school and the Genesis recreational center were planned as a development that would foster a relationship between the two developments, sharing parking as well as amenities the facilities create a sense of community and integration fostering a sharing of not only space but innovative ideas creating a community educational and recreational hub.



*Image of the adjacent Genesis center

An innovative school typology

The new North East Calgary high school will serve 1500 students from grades 10-12 and be comprised of 12,497m² over 2 stories. In addition to the core learning areas present in a typical CBE high school, considerable Career and Technology Studies (CTS) spaces will be developed including aviation, electro tech, culinary arts, etc.

The emphasis on new, innovative career and technology spaces sets the school apart as a leader in innovative technology, as well as a redefined prototype for high school in Alberta.

Furthermore, the design of the high school has strived to address sustainability on multiple levels, both through the sharing of spaces as well as through the use of sustainable materials.



An innovative school typology

The school will operate in partnership with the Genesis Centre utilizing the center's gymnasiums. The school's career and technology study (CTS) spaces in turn are accessible during nights and evenings for classes being offered by the Genesis Centre.

This innovative high school has prioritized the development of career and technology studies. Deviating from the typical amenities offered at prototype high schools, the North East Calgary High school strives to be a leader in innovative technology activities such as aviation and culinary arts, this dynamic learning environment ensures development across multiple academic as well as technological disciplines.



*Image depicting library and central congregation space

A dynamic Learning Environment

The planning process not only addressed the current school requirements but laid a clear plan for future expansion over time and will eventually house a black box theatre as well as additional classroom spaces.

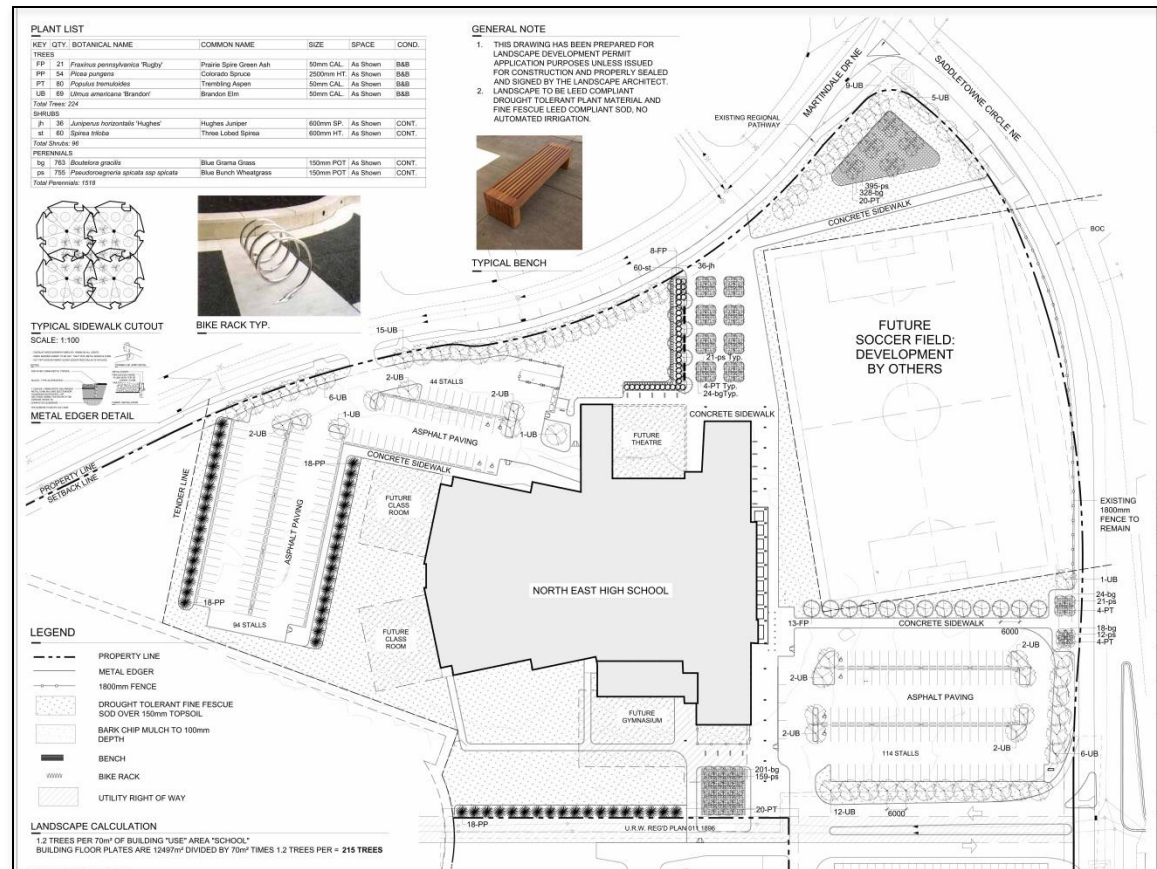
Through rigorous planning, and development, the new North East high school design process has been able to meet the requirements for the various stakeholders. This collaborative design process ensures multiple shareholders requests are brought to the table and later addressed.

Thus, development of the school, has created a strong senses of community involvement as well as created an organized process for future development endeavors.



The physical environment of the North East Calgary high school goes beyond internal programming but rather focuses on an architectural theme that integrates two significant developments in the Martindale community, the Genesis center located in the south and the new North east Calgary high school. This rigorous planning also takes into account outdoor activity's and ensures sustainability through shared use of facilities, the project is pursuing LEED silver.

Furthermore, the edge of the site facing vehicular traffic will be shielded by rows of trees. All major walkways from the perimeter of the site to the building will be lined with trees and landscape features. Overall, a total of 213 trees will be provided to satisfy zoning requirements.



Physical environment

The physical layout of the North East Calgary High School, supports the learning environment through the integration of site activities on the greater land parcel.

This sharing of amenities by the existing genesis center and the New North East Calgary High school create a sense of community as well as dynamism in the built physical environment.



Planning

North East Calgary High School employed a rigorous planning process which required both the input of the educators, the community as well as from design professionals. The early stages of the design process involved the input of community members from the Martindale neighborhood. The community in association with the genesis center were asked to provide input as to what facilities they desired in the school. Through this dialogue, the community expressed interest in a theatre which was later added to the program deliverables.

Preliminary design charrettes (preliminary)
Participants: Educators/ Calgary board of education, Martindale community

Design public hearings (Intermittent)
Multiple public hearings throughout the course of the project development.
Participants: Educators, Design team, the general public.



[illegible]

Second Floor Plan



Exhibition of School Planning and Architecture

Project Data

Submitting Firm :	Zeidler Partnership Architects
Project Role	Design Bridging Architect
Project Contact	Micheal Cojocar
Title	Principal
Address	300 - 640 8 Avenue SW
City, State or Province, Country	Calgary, Canada
Phone	403 233 2525

Joint Partner Firm:	ACI Architects
Project Role	Client Standards, Interior Design, Millwork
Project Contact	Darryl Rewniak
Title	Principal
Address	17225 102 Ave NW, Edmonton, AB Canada T5S 1J8
City, State or Province, Country	Edmonton
Phone	
Other Firm:	
Project Role	N/A
Project Contact	
Title	
Address	
City, State or Province, Country	
Phone	

Construction Firm:	Bird Construction
Project Role	Construction
Project Contact	Construction
Title	
Address	106, 12142-40 th street SE
City, State or Province, Country	Calgary, Alberta
Phone	403.319.0470

Exhibition of School Planning and Architecture

Project Details

Project Name	North East Calgary High School
City	Calgary
State	Alberta
District Name	Calgary Board of Education
Supt/President	n/a
Occupancy Date	2016
Grades Housed	10-12
Capacity(Students)	1500
Site Size (acres)	18.06 acres
Gross Area (sq. ft.)	134, 517 sf
Per Occupant(pupil)	89.67
gross/net please indicate	134, 517 sf
Design and Build?	design build
If yes, Total Cost:	32 million
Includes:	includes all site related costs
If no,	
Site Development:	
Building Construction:	
Fixed Equipment:	
Other:	
Total:	32 million