

# 2014 Exhibition of School Planning and Architecture

## Mountain View Community Learning Center

Salt Lake City School District

Salt Lake City, Utah

# Mountain View Community Learning Center





# Mountain View Community Learning Center Site Plan





## Community Environment:

Nestled adjacent to the existing neighborhood elementary school, this remarkable facility provides a unique program to serve the local community. Part school, part clinic, part adult education facility, the aim of Mountain View Community Learning Center is to address the holistic needs of its constituents.

The center is divided into two interdependent blocks. The north provides five kindergarten classrooms, four early learning/pre-K classrooms with observation rooms, a collaborative core, and administrative space. The south block includes a fully functioning health clinic, optometry and dentistry services, and a counseling center. Also in the south portion of the building are two large classrooms and a large divisible multi-propose room that can be used for anything from zumba to nutrition to cooking classes for the large immigrant population in the area.



**Collaboration Space**

A large volume of collaborative multi-activity space connecting all kindergarten classrooms acts as a warm and dynamic space for group work. The yellow picture frame and blue wall beyond beckon to Early Childhood students.

## Community Environment: *Continued...*

Both blocks focus on teaching English in an area where English is often not spoken in the home. Three separate and securable entrances allow the childhood learning, adult education, and health services to be accessed on a stand-alone basis.

The Community Learning center is not only an expansion of the elementary school but also as a hub for the local neighborhood. Its in-depth and complex program was developed by a partnership between six unique stakeholders including Salt Lake City School District, Intermountain Healthcare and the University of Utah.

This facility was conceived as a result of the unique nature of a community where most children have never seen a dentist or had their eyes checked, and where their parents have no access to the type of support groups that many Americans enjoy. Mountain View serves as a critical center of this community.



**Dental Exam Room**



## Learning Environment:

Stakeholders goals and architectural solutions:

1. Create a space to house the Kindergartners from the adjacent elementary, allowing the District to remove the portable classrooms.
2. Develop Early Childhood classrooms in conjunction with the University of Utah School of Education to study methods of teaching, as well as educating the next generation of teachers.
3. Because many of the parents want to volunteer or be involved in their children's education, the idea of a "Parent's Lounge" was conceived; a place to meet and exchange information, as well as a place for resources to be located.

## Early Childhood & Kindergarten Classrooms

All classrooms have large exterior windows as well as large windows into the collaboration space. They are brightly colored to create a fun place to learn and aid wayfinding.





# Flexible Adult Classrooms

## Learning Environment: *Continued*

4.Design a space for a health care provider to provide free health care to the community. This grew from four exam rooms to five, one dedicated to prenatal care, plus reception, office and lab support spaces. Additionally, provide exam rooms for two dental chairs and an optometry exam room.

5.Another partner in the program staffs a center to assist constituents with their needs in terms of counseling. This includes counselors' offices and reception and support spaces.

6.The adult education program needed to be ultimately flexible, accommodating typical adult ed classes in computer use, ESL, exercise, art, etc. A program twist was the need for a demonstration and learning kitchen facility to allow the immigrant community to learn how to use American ingredients and appliances, including clothes washers and dryers.



## Physical Environment :

The building has multiple uses and entries but the design goal was to avoid fragmenting the mass. Three sheltering canopies were created, clad in rich red metal shingle, trimmed out and highlighted by large Alaskan cedar window systems and a warm trestle wood soffit that creates a dramatic yet inviting front facade.

To create a center that the entire community would not only be proud of but use to its fullest potential, the design team needed to work with the service providers and stakeholders to identify the greatest needs of the community and design a facility that would fill those needs in the most effective, functional way possible. Once those needs were discovered, a program was developed to best meet them within a very tight budget that left no room for “architectural fluff”.



Entry Portals at night



## Physical Environment – Continued

However, it was very important to the stakeholders to create an attractive building, something that that would shine in the community, a center that the residents would be proud to call their own but yet still fit within the context of the surrounding buildings and stay within budget.

The design team used a number of products and methods that are either new or measurable to see how best to implement or modify them in future projects. Namely; the metal panel “scales” system on the front facade, the rainwater harvesting system, the location and positioning of the rooftop PV solar panel array, the AV systems including “smartboard” technology in each classroom, and the daylight harvesting system controlling the LED lighting used exclusively in the building. The team will be monitoring the state of the salt impregnated trestle-wood soffit and fascia as the seasons pass.



**Entry Lobby to Clinics with  
Art Gallery beyond**



## Planning Process:

Mountain View Community Learning Center's in-depth and complex program was developed by a partnership between six unique stakeholders including Salt Lake City School District, Intermountain Healthcare and the University of Utah. The planning process took place over a period of a year, and also included meetings with local community members, the administration and staff at the adjacent Mountain View Elementary, multiple School District curriculum experts and teachers, volunteer eye doctors and dentists, and the District Community Development Director, who orchestrated the project from conception to conclusion. These stakeholders were represented in the planning process in order to outline the goals.

This process resulted in a facility with three distinct and welcoming Entry Points, state-of-the-art learning spaces, and a remarkable transparency within the building.



**Counseling Center Reception**



## Planning Process: Continued

In order to ensure that the final product was aligned with the Vision and Goals set during the planning phase, stakeholders participated in multiple design meetings, specifically tailored to each group. This allowed everyone to verify that their original concerns and needs, documented during the planning phase of the project, were being addressed, and that the solutions proposed were ideal for each group, as well as the whole.

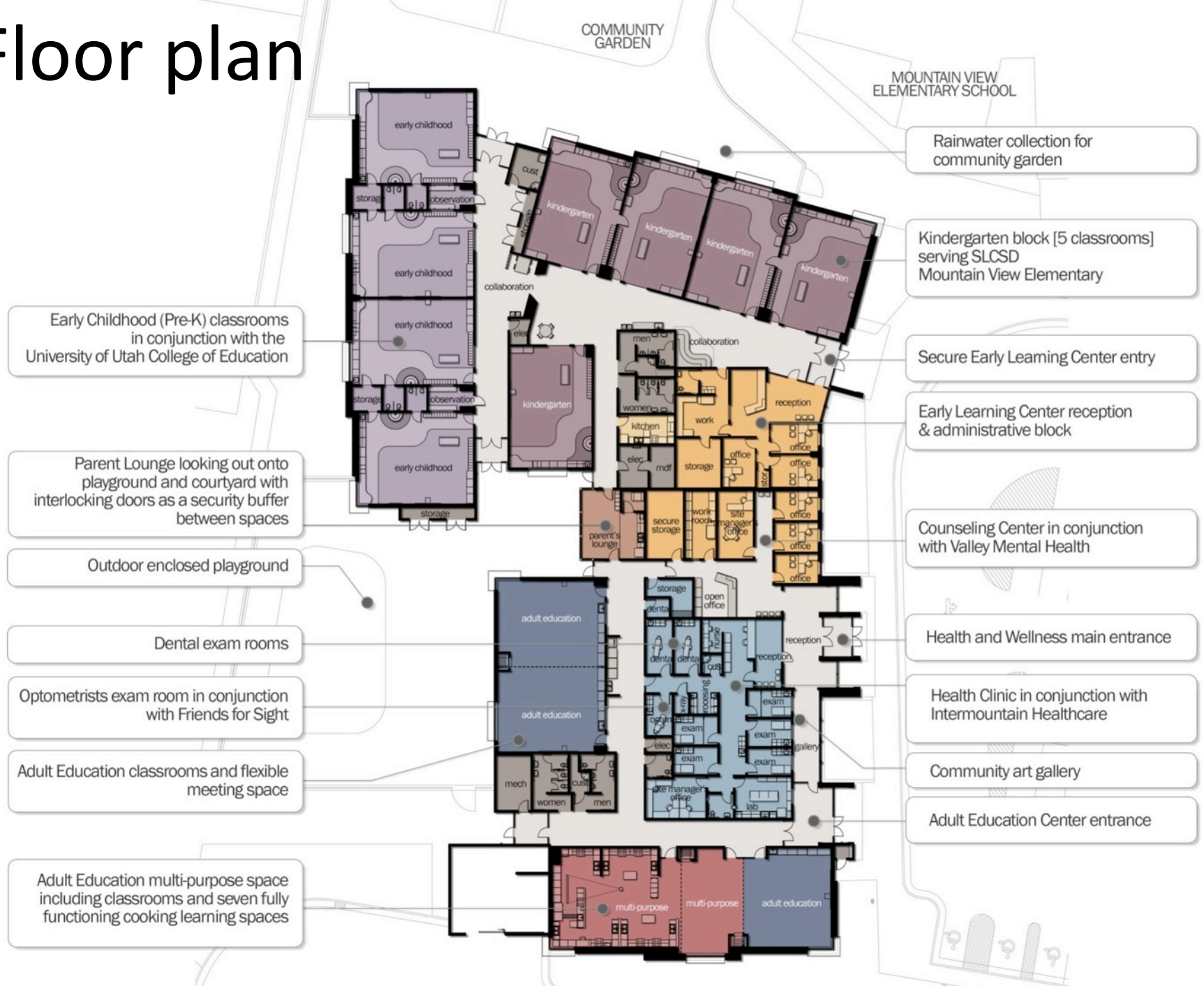
The Planning team continued to be involved heavily in the design phase, sharing input on color selection and in the FF& E selection portions of the project, and touring the project during construction to fine tune programmatic elements of the areas in which they were specifically involved.

Rainwater is collected into a cistern used for watering the adjacent Community Garden, and acts as a teaching tool for the Kindergartners, who can watch the water falling into the cistern when it rains.

## Rainwater collection with Cistern



# Floor plan





# Exhibition of School Planning and Architecture

## Project Data

Submitting Firm :	VCBO Architecture
Project Role	Design/Project Architect
Project Contact	Jeanne Jackson, FAIA, LEED AP
Title	Project Architect
Address	524 South 600 East
City, State or Province, Country	Salt Lake City, Utah, 84102
Phone	801.575.8800

Joint Partner Firm:	N/A
Project Role	
Project Contact	
Title	
Address	
City, State or Province, Country	
Phone	

Other Firm:	N/A
Project Role	
Project Contact	
Title	
Address	
City, State or Province, Country	
Phone	

Construction Firm:	Paulsen Construction
Project Role	General Contractor
Project Contact	John Paulsen
Title	Owner / Project Manager
Address	3075 South 230 West
City, State or Province, Country	Salt Lake City, Utah 84115
Phone	801.484.5545

# Exhibition of School Planning and Architecture

## Project Details

<b>Project Name</b>	Mountain View Community Learning Center
<b>City</b>	Salt Lake City
<b>State</b>	Utah
<b>District Name</b>	Salt Lake City School District
<b>Supt/President</b>	Dr. McKell Withers
<b>Occupancy Date</b>	August 2013
<b>Grades Housed</b>	Pre-K, Kindergarten, Adult Community Education
<b>Capacity(Students)</b>	225 in Early Learning, Adult Community Learning is undetermined, due to the variety and changing nature of Programs offered, and full day capability
<b>Site Size (acres)</b>	2.25 acres
<b>Gross Area (sq. ft.)</b>	29,565 s.f.
<b>Per Occupant(pupil)</b>	79 s.f./student
<b>gross/net please indicate</b>	29,565/4,852 = 6.09
<b>Design and Build?</b>	No
<b>If yes, Total Cost:</b>	
<b>Includes:</b>	
<b>If no,</b>	
<b>Site Development:</b>	\$ 641,463
<b>Building Construction:</b>	\$ 4,378,103
<b>Fixed Equipment:</b>	\$ 150,000
<b>Other:</b>	
<b>Total:</b>	\$ 5,169,566



A large solar array, purchased partly with grants from the local Electrical utility, covers most of Mountain View Community Learning Center's roof.





The Parents' Lounge works as a resting place for parent volunteers who need a break from classes. It overlooks the outdoor play areas. The Lounge also acts as a security buffer between Adult Ed and Clinic areas and the Children's classes.





Secured play area for the children at Mountain View Community Learning Center.





Dental exam room



Optometry exam room





Fun Quotations tailored to children are featured on the glazing throughout the project

