

# 2014 Exhibition of School Planning and Architecture

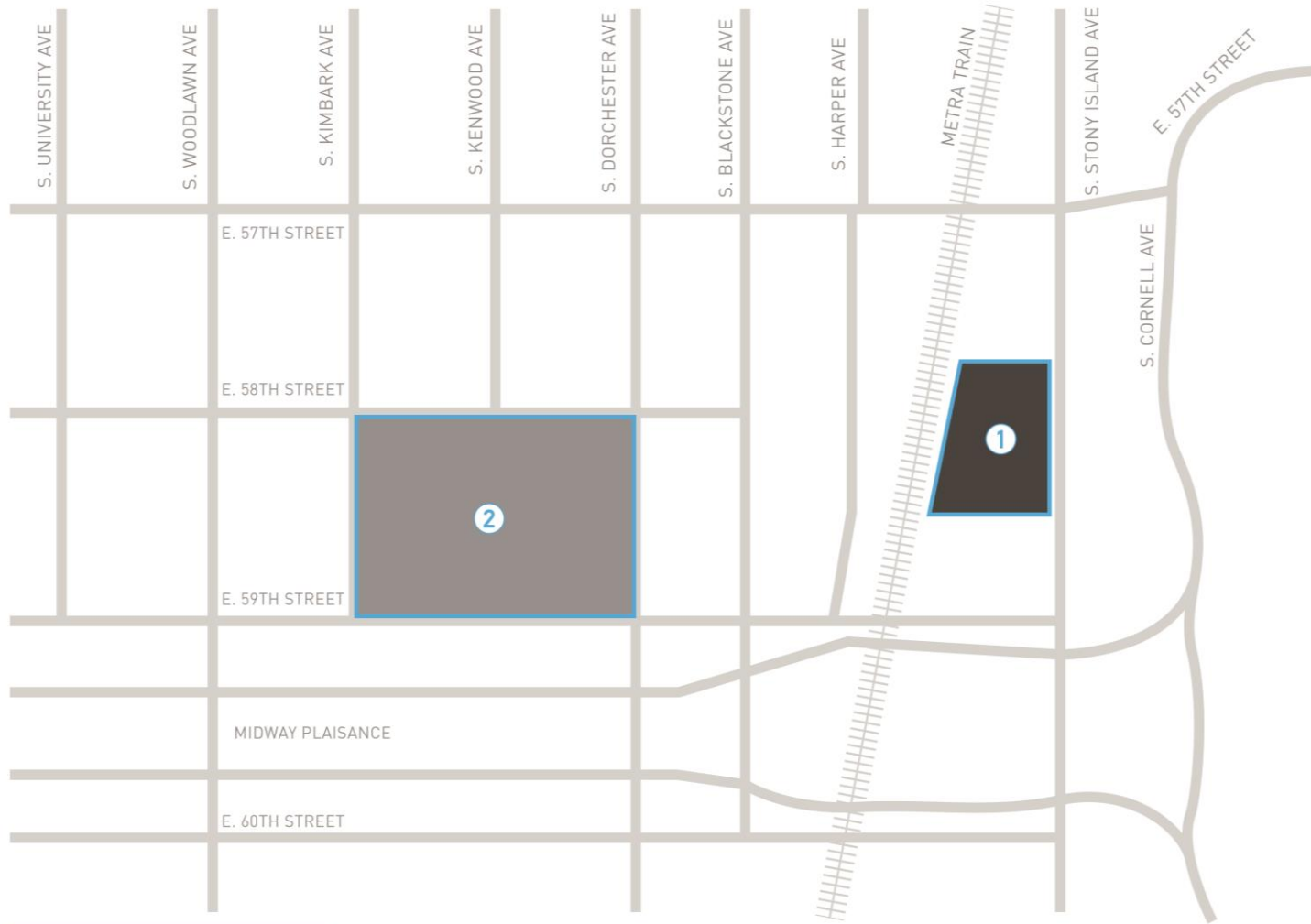
Earl Shapiro Hall

University of Chicago Laboratory Schools  
Chicago, Illinois

# Earl Shapiro Hall



# Earl Shapiro Hall



## Earl Shapiro Hall Site Plan

(not to scale)

Chicago, IL

### PLAN KEY

- ① Earl Shapiro Hall
- ② Existing Lab Campus





## Community Involvement

The design team employed an extensive research program to initiate the project, beginning with an immersion in the daily activity in the life of the University of Chicago Laboratory School (UCLS). Stakeholders, including teachers, parents, administration and members of the extended community, were interviewed regarding both the current culture of learning and community at the school and their vision for the school. Once the vision was in place, the site was selected for the development of Earl Shapiro Hall (ESH).

Originally planned for a vacant site on the Lab Schools' existing campus, the ESH was moved off-campus when a superior site across from Chicago's Jackson Park and the Museum of Science & Industry (MSI) became available. The project received a warm welcome from the community as the existing site contained a hospital which had been abandoned for many years. Beyond improving the neighborhood presence, selecting this site allowed for a significant amount of outdoor space, which was identified as a critical feature for the young students' education.



## Community Involvement *Continued*

The natural beauty of the park is especially visible to students, as the design features numerous views to the park. The location also offers proximity to the lakefront, the park and a major cultural institution, the Museum of Science and Industry (MSI). Earl Shapiro Hall represents the first physical dialogue between the University of Chicago and the MSI. By also selecting a site within the community, a better flow of traffic was able to be planned, whether students were arriving by transit, bus, car, bike or foot.

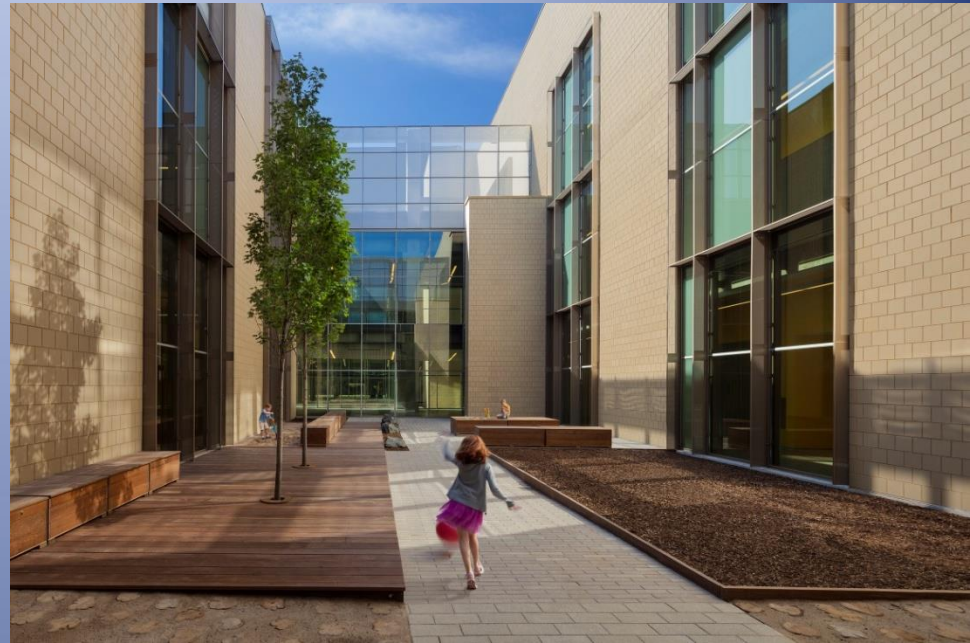
The overall building design itself features a transparent main lobby and cantilevered library reaching out to the park, welcoming students and community members. The public spaces promote the gathering of children, including the use the lobby for the tradition of the “lobby sing” or the arrangement of classrooms around interior and exterior (courtyard) learning laboratories. The large group spaces are also used for special events with parents or with other Lab students. The building design truly allows the Laboratory Schools the opportunity to grow and maintain their heritage of offering a high quality education to a diverse group of students.





## Learning Environment

Founded by John Dewey in 1886, the University of Chicago Laboratory Schools have been a successful experiment in teaching theory and practice for students nursery through 12th grade. The new Earl Shapiro Hall (ESH) is 130,000 sf located on Stony Island Avenue across from Chicago's Jackson Park and the Museum of Science and Industry. ESH provides 34 classrooms and learning labs for students three years old through second grade. The design relates to Dewey's philosophies by emphasizing outdoor spaces, learning labs and other in-between spaces as breakout, work and collaborative learning areas adjacent to the classrooms. Every space is designed to promote the spark of learning, foster interaction and have flexibility to support many types of learning, from group to individual. The classrooms are designed to be flexible and to encourage the teaching philosophies of the Reggio Emilia approach to early childhood education.



## Learning Environment *Continued*

This approach's principles aim to place the child within a larger learning community, guide them in learning, allow them to interact with curriculum and ensure that learning and play is accessible in every part of the building. Giving the students some control over their environment enables them to engage with and direct their own learning, helping them succeed.

The classrooms themselves are designed to be flexible and to encourage interaction with adjacent classrooms and shared breakout rooms. Classrooms are organized around a central open air courtyard and adjacent circulation that students move through during the entire day, seeing themselves in the larger community of the school. Among the building's innovations is the incorporation of un-programmed learning labs at the center of the school, offering even more flexibility. Outdoor play spaces, the gym, art and music rooms and the dramatically cantilevering library are important destinations for students outside the classroom. The furniture and space configurations are designed to be flexible, accommodating future growth.





# Physical Environment

Earl Shapiro Hall is a prominent new civic building at the east edge of the University of Chicago Campus. Early in the project, a Laboratory School teacher challenged the design team to make a building that engaged the intelligence and creativity of the students inviting them to discover a complex and wide-ranging world. At each step of the process, the team strived to create a building that is complex, legible and beautiful.

The building itself was designed as a teaching tool, using exposed materials and exposed mechanical systems to spark the curiosity of how buildings function and are constructed. The Fibonacci series is used as a proportioning and rhythmic device in the design of the exterior facades and is literally incorporated into wall coverings in public spaces. The large group spaces are also used for special events with parents or with other Lab students.





## Physical Environment *Continued*

The main street façade of the building was developed as a series of vertical pylons that echo the neo-gothic towers of the historic campus. The library's south glass face is tipped towards the sun, reducing the solar gain and energy required to heat and cool the building. It was quickly discovered that the children love leaning against the outward tipping glass of the library. The space is a floating treehouse, where they can hold a book in their hands, or sit with a group of students in the treehouse overlooking the park that is the story telling space.



## Process

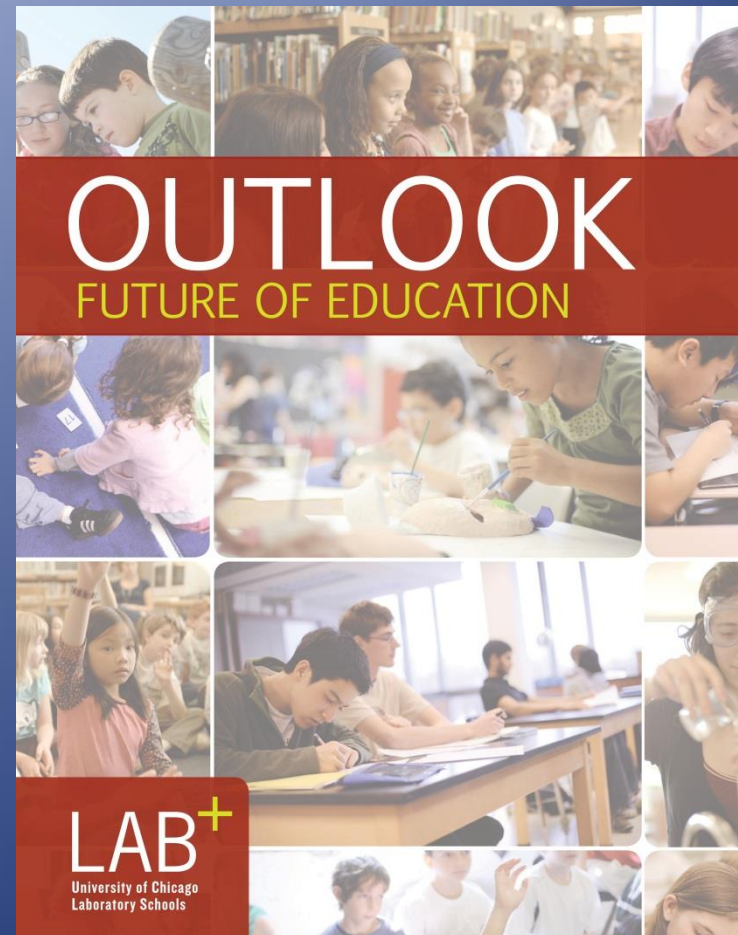
An extensive research program initiated the project beginning in 2008 with the design team's immersion in the daily activity in the life of the school. Stakeholders, including teachers, parents, administration and members of the extended community, were interviewed regarding both the current culture of learning and community at the school and visions for education ten or 20 years in the future. The process mirrors the learning environment by its use of group discussions, stakeholder input and the shared commitment to John Dewey's educational principles that strongly guide the Lab Schools' curriculum. The building's planning is based on the incorporation of outdoor spaces, learning labs and other in-between spaces as breakout, work and collaborative learning areas adjacent to the classrooms. The planning process organically led the team to extend the conversation, identifying key questions that were asked of thought leaders in education in a series of interviews. The design team experienced classes, school traditions and daily UCLS activities to learn all they could about the school.





## Process Continued

The design team's research findings were brought back to a stakeholder group in an extended workshop with the design team to evaluate the findings and set a vision for the future of the Lab School. The process was documented in a publication, "The Future of Education," which was widely circulated. As students and teachers are now using the building, they provide input on how they are using the spaces and how they align with learning outcomes, helping inform how goals were met. Those involved the planning process included UCLS faculty, administrators, board members, the steering committee, top educational thought leaders, the planning and design team and other UCLS staff.



# Floor 01



## FLOOR 01

EARL SHAPIRO HALL  
UNIVERSITY OF CHICAGO LAB SCHOOLS

- |                                    |                        |
|------------------------------------|------------------------|
| 1 Front Plaza                      | 8 Outdoor Playspace    |
| 2 Main Lobby                       | 9 South Lobby          |
| 3 Nursery / Kindergarten Admin     | 10 Drop-Off            |
| 4 Nursery / Kindergarten Classroom | 11 Receiving / Loading |
| 5 Breakout Room                    |                        |
| 6 Learning Lab                     |                        |
| 7 Courtyard                        |                        |





# Floor 02



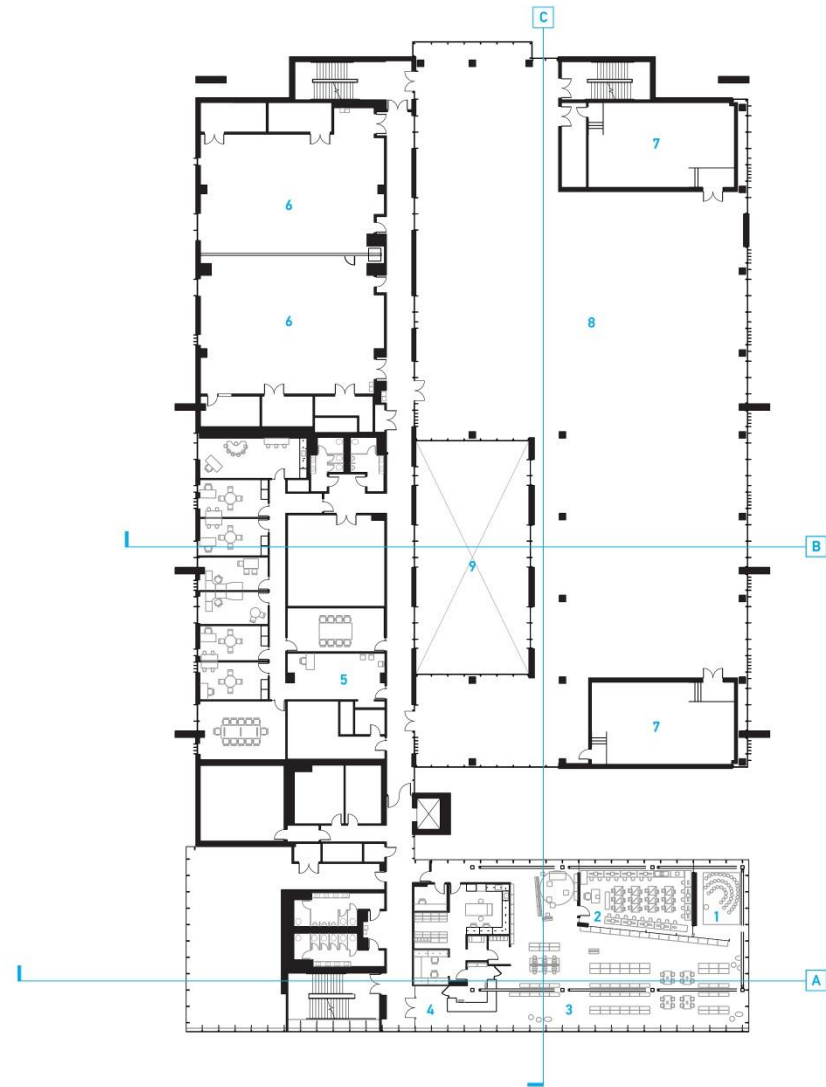
## FLOOR 02

EARL SHAPIRO HALL  
UNIVERSITY OF CHICAGO LAB SCHOOLS

- |                                    |                         |
|------------------------------------|-------------------------|
| 1 First and Second Grade Admin     | 8 After School Programs |
| 2 Faculty                          | 9 Learning Lab          |
| 3 Outdoor Playspace                | 10 Open to Below        |
| 4 Art Classroom                    | 11 South Lobby          |
| 5 Music Classroom                  |                         |
| 6 First and Second Grade Classroom |                         |
| 7 Breakout Room                    |                         |



# Floor 03



## FLOOR 03

EARL SHAPIRO HALL  
UNIVERSITY OF CHICAGO LAB SCHOOLS

- 1 Story Telling Room
- 2 Computer Lab
- 3 Library
- 4 Circulation Desk
- 5 Office / Reception Area
- 6 Gymnasium
- 7 Mechanical

- 8 Outdoor Playspace
- 9 Open to Below





# Exhibition of School Planning and Architecture

## Project Data

Submitting Firm :	FGM Architects, Inc.
Project Role	Architect of Record
Project Contact	Jim Woods, AIA, CEFP, LEED AP BD+C
Title	Director, PK-12 Education
Address	1211 West 22 <sup>nd</sup> Street, Suite 705
City, State or Province, Country	Oak Brook, Illinois 60523
Phone	630.574.8711

Joint Partner Firm:	Valerio Dewalt Train Associates
Project Role	Design Architect
Project Contact	Randy Mattheis
Title	Principal
Address	500 North Dearborn Street, 9 <sup>th</sup> Floor
City, State or Province, Country	Chicago, Illinois 60610
Phone	312.260.7300

Other Firm:	
Project Role	
Project Contact	
Title	
Address	
City, State or Province, Country	
Phone	

Construction Firm:	Lend Lease, Inc.
Project Role	Construction Management
Project Contact	Jeff Riemer
Title	Executive Vice President
Address	1 North Wacker, Suite 850
City, State or Province, Country	Chicago, Illinois 60606
Phone	312.245.1392

# Exhibition of School Planning and Architecture

## Project Details

<b>Project Name</b>	University of Chicago Lab Schools - Earl Shapiro Hall
<b>City</b>	Chicago
<b>State</b>	Illinois
<b>District Name</b>	University of Chicago Laboratory Schools
<b>Supt/President</b>	David Magill, Director
<b>Occupancy Date</b>	August 2013
<b>Grades Housed</b>	PK-2
<b>Capacity(Students)</b>	600
<b>Site Size (acres)</b>	17
<b>Gross Area (sq. ft.)</b>	130,000
<b>Per Occupant(pupil)</b>	216.67
<b>gross/net please indicate</b>	gross
<b>Design and Build?</b>	No
<b>If yes, Total Cost:</b>	N/A
<b>Includes:</b>	N/A
<b>If no,</b>	
<b>Site Development:</b>	\$1,200,000
<b>Building Construction:</b>	\$50,800,000
<b>Fixed Equipment:</b>	\$1,500,000
<b>Other:</b>	\$6,500,000
<b>Total:</b>	\$60,000,000



# Supplemental Images













