

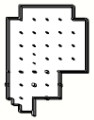
2014 Exhibition of School Planning and Architecture

e3 Civic High

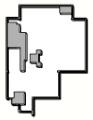
San Diego Unified School District

San Diego, CA

e3 Civic High School



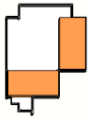
STRUCTURE



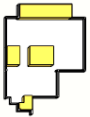
BUILDING CORE



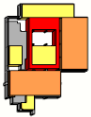
CIRCULATION



VILLAGES



SPECIALTY



INTEGRATED



E3 Civic High School
is located on
the 6th + 7th
floor of the
San Diego
Downtown
Public Library

e3 Civic High School



01

06

07



School in a Library

/ Community Environment

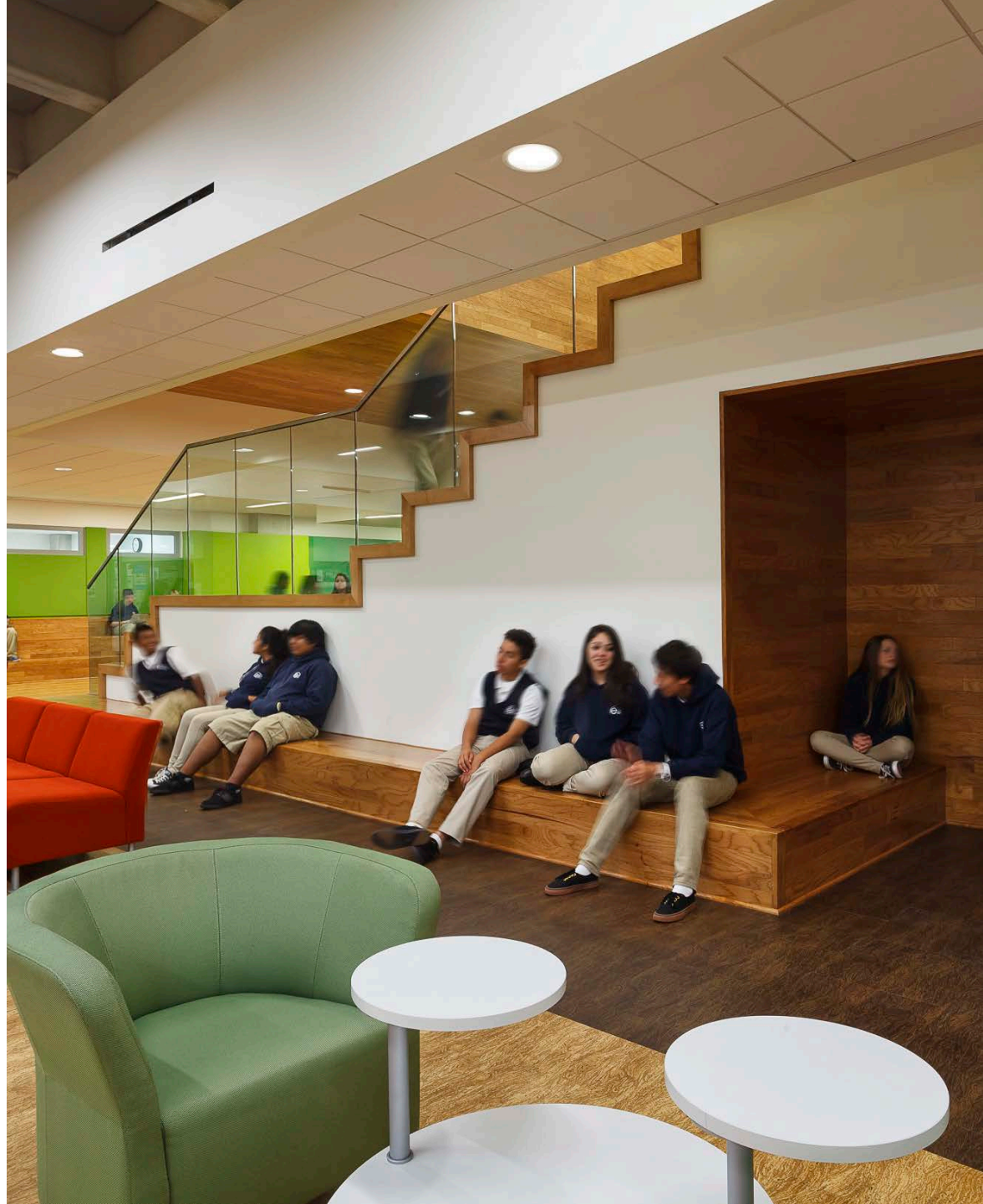
The co-location of a high school within a public library offers extensive opportunities for collaboration and engagement, as both organizations support a mission of lifelong learning and digital literacy. While the primary focus is the education of the students, the new design will support the partnered venture between the school and a community based organization. Downtown San Diego is considered an extension of the learning environment, with internships for third and fourth year high school students. This design demonstrates the mutual benefit of going beyond simply sharing a space, to sharing a common purpose.



Learning Villages

/ Community Environment

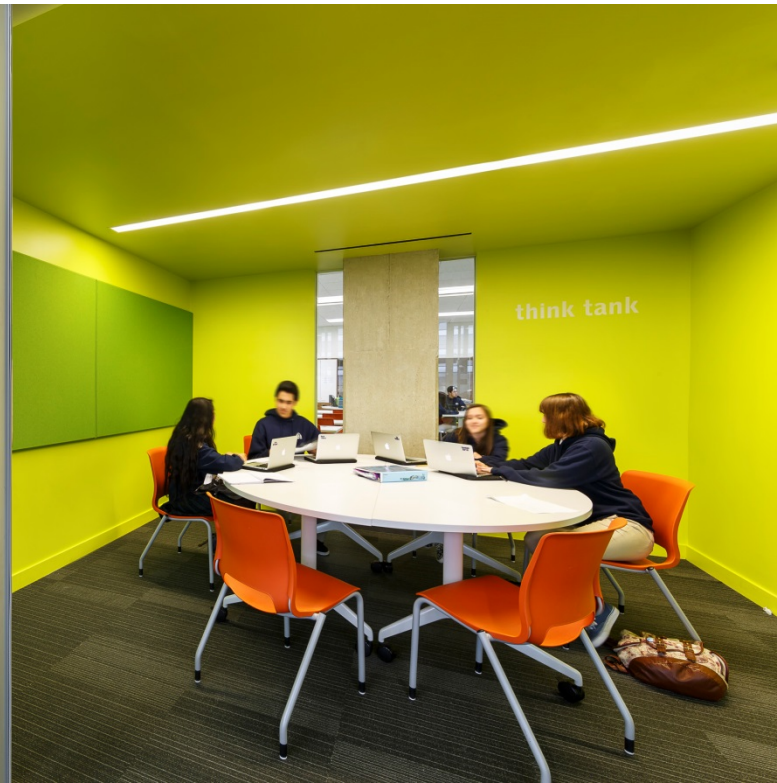
Establishing a college and career preparatory high school that serves the San Diego Urban Community, this new charter school aims to provide an environment where students learn, create and excel through community partnerships and social relationships. The entrance to the school is not a lobby, but the common “Park” with collaborative spaces to engage community, parents and students alike. The Entry Park for the charter school communicates to students and visitors the open and collaborative educational focus of the school. The school will create and provide an **engaging and personalized learning partnership** for each student, both at school and in the community.



Project Based Learning

/ Learning Environment

Understanding the curriculum was a primary focus of the design process. The Learning Environment space will support the project based curriculum and personalize the learning experience. Creating a student owned space helps increase the social and collaborative connections by giving various locations for students to gather independently or as a team - based on learning preferences. The space design intentionally looks for ways to create a collision-rich school, where conversations and shared knowledge creates community and allows for mentorship in the new educational learning environment. The learning studios are clustered around a shared commons with Team Rooms (Think-Tanks) for brainstorming.



Personalized Spaces

/ Learning Environment

The new charter school uses the city as a classroom. Therefore, the interaction that occurs inside of the school's walls is dedicated to project based learning & collaboration. Every space, every corner, and every surface allows for students to pause and learn, share or focus.

Specialty Labs include an environmental science lab, a multi-media studio, and an innovation lab. These spaces are designed in a way that allows for mobility and meaningful exploration for the students.

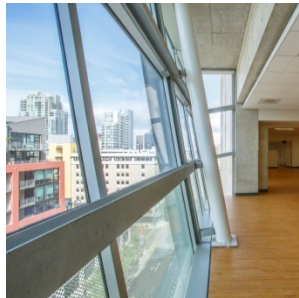
Transparency and writable wall surfaces create an environment that celebrates student activity and inspires innovation, students are the curators.



Sustainable Learning

Physical Environment:

The context of the school within an existing LEED Silver building set a high bar for e3 Civic High. The integration of facilities established a sustainable expectation for the school, also tracking LEED Silver. The design that supports a transparent curriculum also supports a sustainable learning environment with the classrooms along the perimeter of the building to bring in natural daylight and views. Sustainable strategies are illustrated throughout with signage, allowing students to participate in and understand the story. The building is a teaching tool in ways that celebrate sustainability, construction and engineering, and learning. The physical space is transparent, inviting and engaging.



Next Generation Learning Spaces

Physical Environment :

The school is a student-centered, and digitally transparent learning environment where the physical space is directly connected to students learning preferences and curriculum. The design is flexible and allows the user to re-configure spaces for an authentic personalization. Learning Studios, Labs and Circulation spaces have multiple 'learning walls', movable furniture, a variety of flooring surfaces and utilities. The studios and wet labs are clustered around the commons for shared learning opportunities, break out and project development or presentation. The inclusion of small think-tanks allows for a smaller scaled discussion to occur.



Urban Planning for Education

/ Planning Process

Through a relationship between The City of San Diego, San Diego Unified School District and the San Diego Public Library Foundation, e3 Civic High School successfully links education into the urban culture. With a goal to enhance 21st Century learning opportunities in an urban environment, a series of workshops composed of curriculum discussions, image sharing, building tours, and qualitative charettes defined the planning process. Given the unique location, collaboration with stakeholders was key; that list included:

- SDUSD Officials
- Charter School Leadership
- San Diego Library Foundation
- The City of San Diego
- Students from neighboring schools



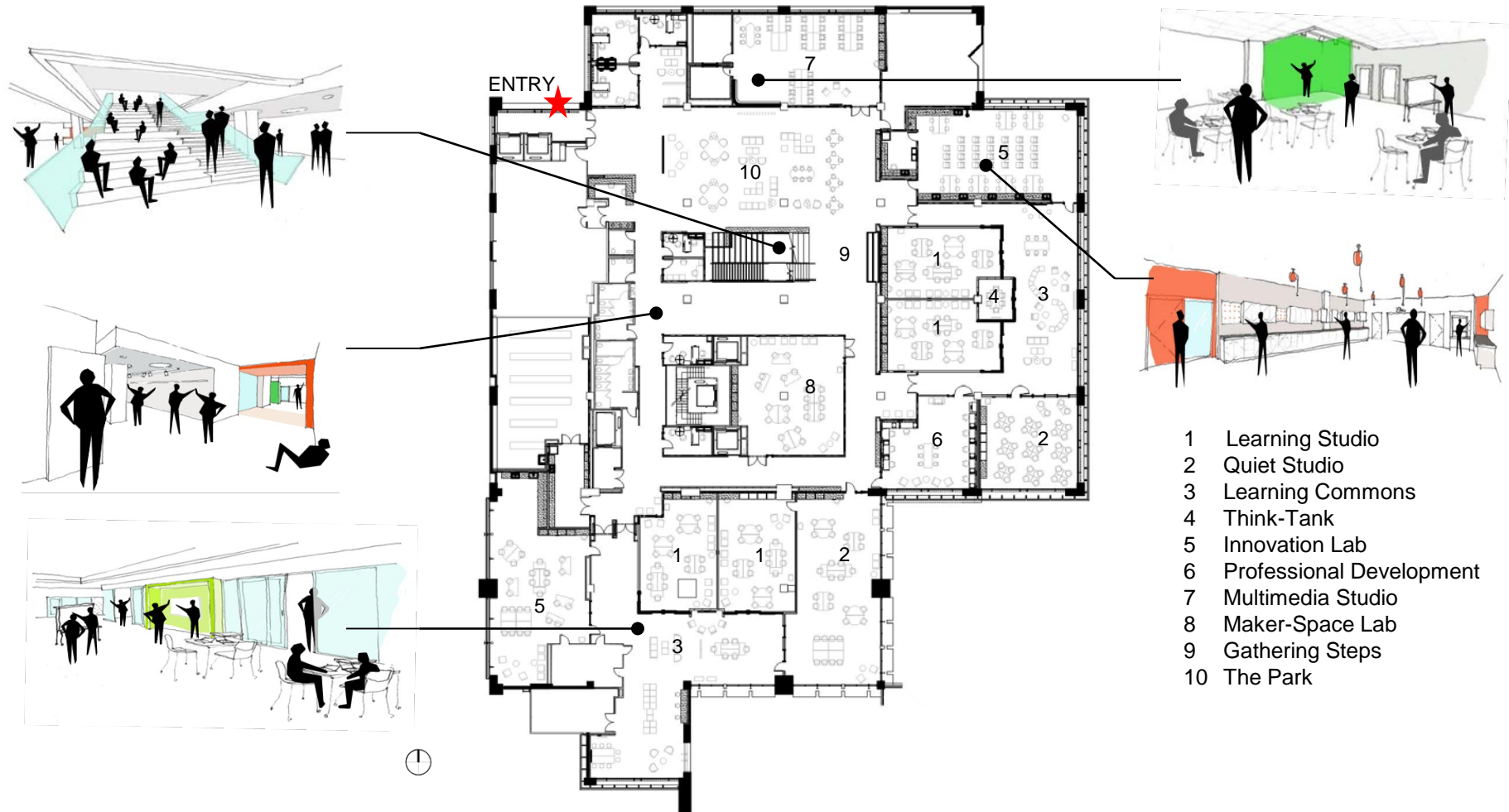
Pedagogy + Place

/ Planning Process

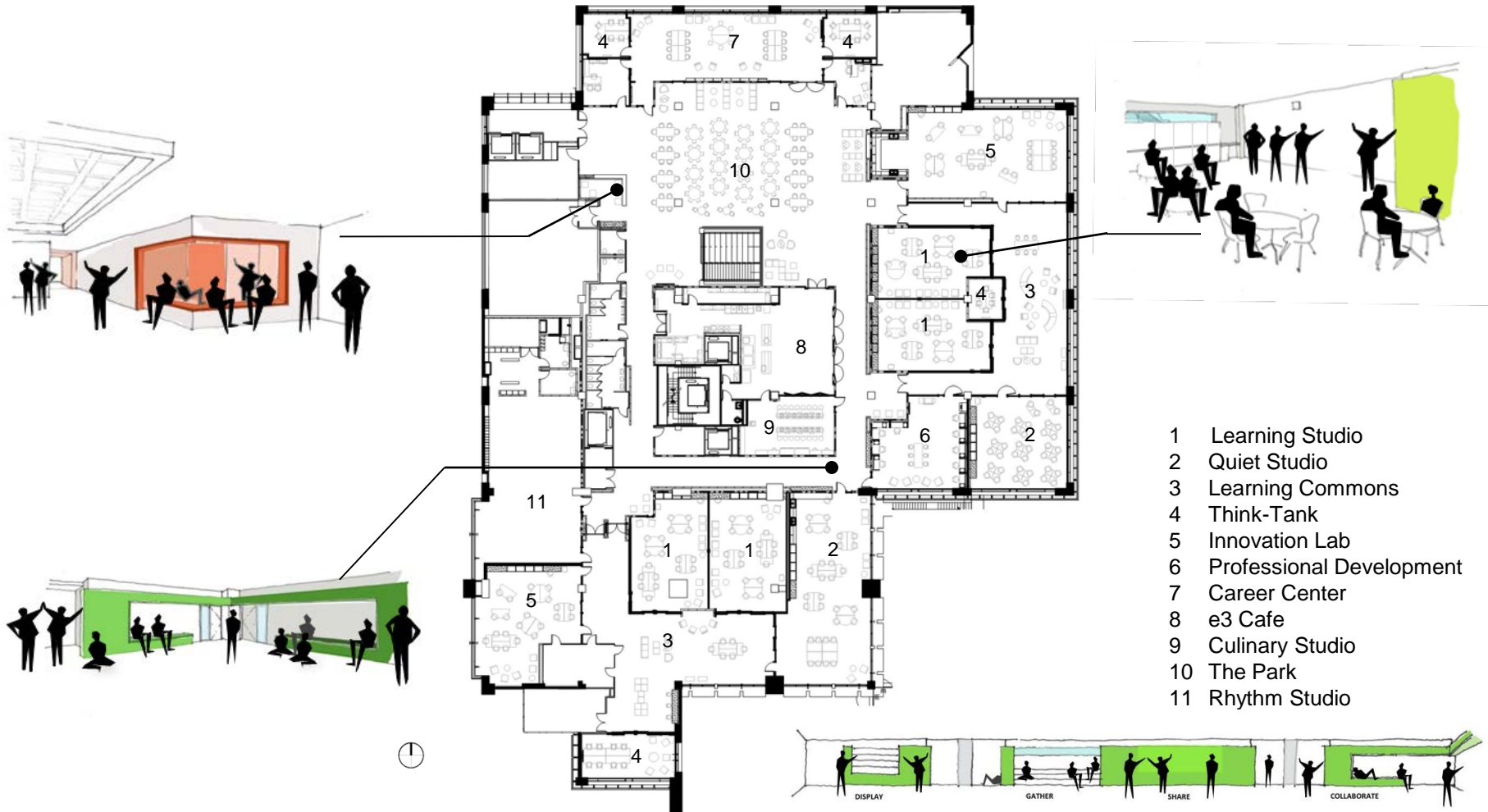
The process behind designing e3 Civic High is apparent in the outcome. The team believed that the space would create and encourage a lifelong learning culture. As a new school, without staff on hand, the team created research-based methods for planning. Using students from neighboring schools and teachers throughout the district, e3 is the result of an exploration in planning to define the spatial needs for a project based curriculum. The design team facilitated experience mapping exercises, persona development theories, and exercises in programming for sociological groupings and spatial characteristics. This process is now influencing the way the school district programs their schools.



6th Floor Plan



7th Floor Plan



Exhibition of School Planning and Architecture

Project Data

Submitting Firm :	LPA, Inc.
Project Role	Architecture
Project Contact	Wendy Rogers, FAIA
Title	Architect of Record
Address	131 14 th Street
City, State or Province, Country	San Diego, CA 92101, USA
Phone	949-701-4151

Joint Partner Firm:	N/A
Project Role	
Project Contact	
Title	
Address	
City, State or Province, Country	
Phone	

Other Firm:	N/A
Project Role	
Project Contact	
Title	
Address	
City, State or Province, Country	
Phone	

Construction Firm:	Triton Construction
Project Role	Contractor
Project Contact	Jamie Kimball
Title	Project Manager
Address	15435 Innovation Drive, Suite 100
City, State or Province, Country	San Diego, CA 92128
Phone	858-558-1800

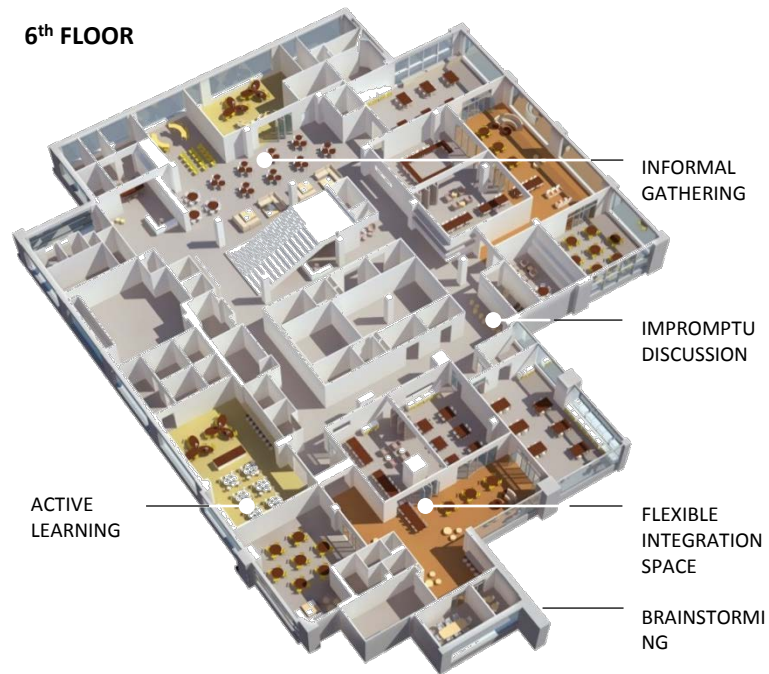
Exhibition of School Planning and Architecture

Project Details

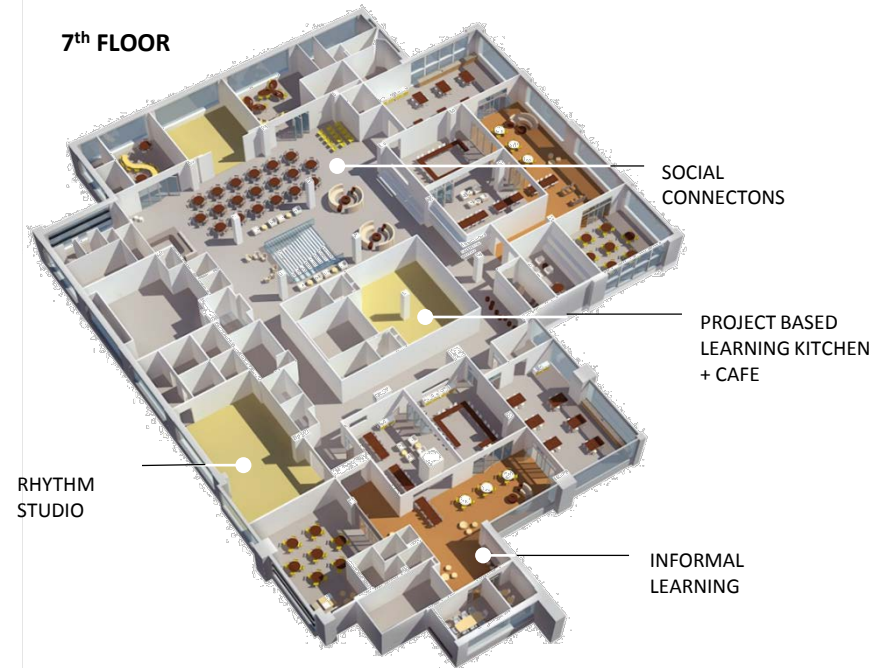
Project Name	e3 Civic High School
City	San Diego
State	California
District Name	San Diego Unified School District
Supt/President	Cindy Marten
Occupancy Date	August 2013
Grades Housed	9-12 High School
Capacity(Students)	500
Site Size (acres)	n/a
Gross Area (sq. ft.)	64,000 sq ft
Per Occupant(pupil)	120
gross/net please indicate	
Design and Build?	Design, Bid, Build
If yes, Total Cost:	
Includes:	
If no,	
Site Development:	\$0
Building Construction:	\$7.6 M
Fixed Equipment:	\$400K
Other:	\$300K (FF&E)
Total:	\$8.3 M

Supporting/Supplemental files/Images

6th FLOOR



7th FLOOR



Supporting/Supplemental files/Images



Supporting/Supplemental files/Images



Supporting/Supplemental files/Images

