

# 2013 Exhibition of School Planning and Architecture

## Concord Elementary Schools:

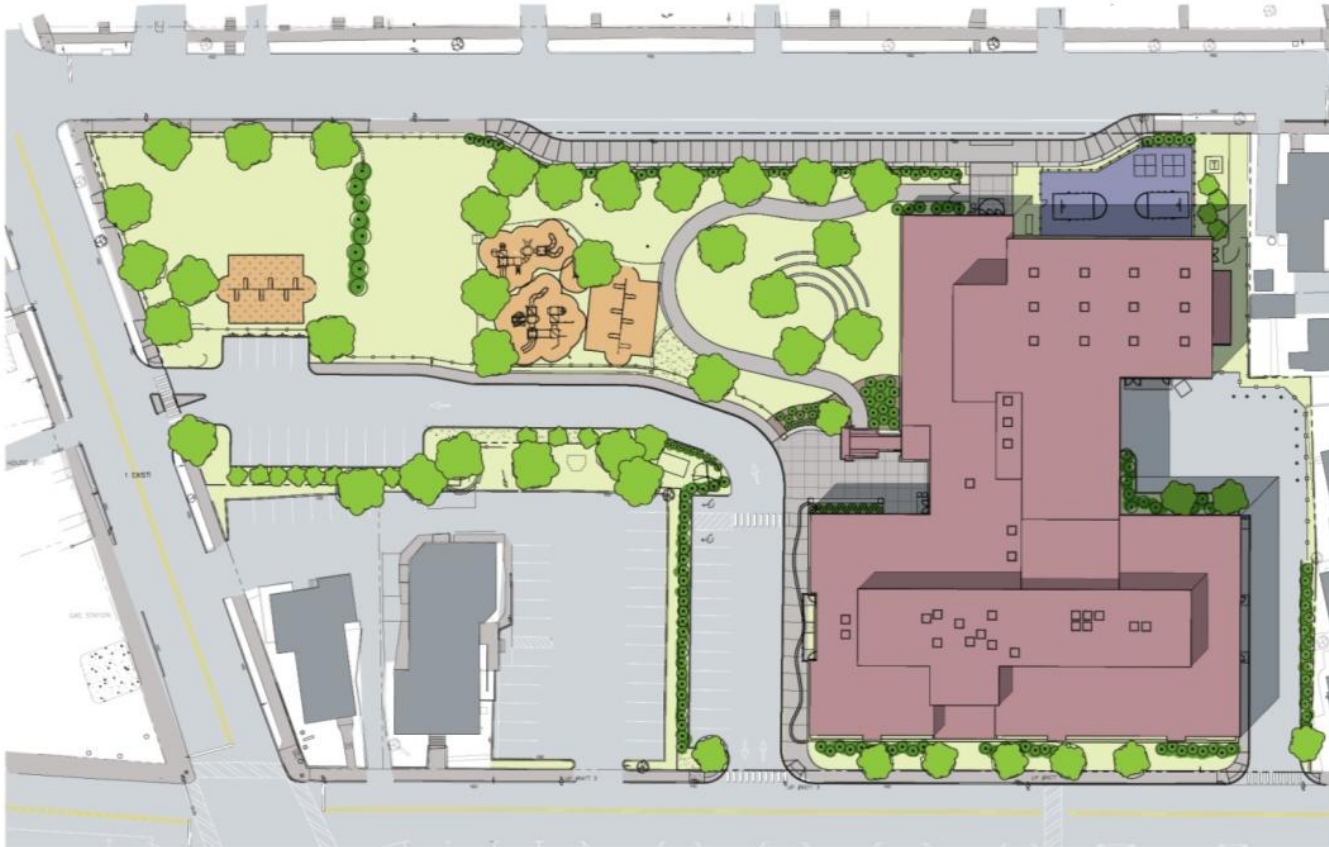
Abbot-Downing, Christa McAuliffe and Mill Brook Primary

Concord, New Hampshire  
Elementary School  
New Construction

# Concord Elementary Schools



# Concord Elementary Schools: Christa McAuliffe



Christa McAuliffe School

Concord, NH

Site Plan



\*We have used the Christa McAuliffe School site and floor plans to represent all three Concord Schools



## Reuse of Signature Elements

**Community Environment:** While community members knew that the original Kimball and Conant Schools were in need of replacement, there was still strong attachment to the character of the original buildings. When designing the new Christa McAuliffe to replace Kimball and Abbot-Downing to replace Conant, elements from the original buildings were salvaged and incorporated into the new facilities to honor each school's history and significance.

Historic granite from the original Kimball School is prominently incorporated into the McAuliffe School's entryway, while the Abbot-Downing School is topped with the signature cupola from the former Conant School.



## Neighborhood Context

**Community Environment:** During the planning process, the designers carefully considered options for keeping McAuliffe's predecessor on its urban site to maintain its role as a downtown neighborhood school. The original four-story Kimball School was replaced with a two-story building, scaled to fit the residential context while retaining the historic feel of the original building.





## The Learning Corridor

**Learning Environment:** The design, which grew from observations and research about the ways students learn, integrates a central “Learning Corridor” into the heart of the school. Accessible just outside classroom doors, these spaces support differentiated instruction with a variety of learning environments, from an amphitheater for group performances or full class work, to project-based areas with wireless access and flexible furniture for small group collaboration. The open plans of the school are defined by subdivisions that create implied nooks, enabling learning to happen anytime and anywhere. Adaptable spaces with a range of moveable furniture, interactive whiteboards and sinks foster hands-on exploration and inquiry to support 21<sup>st</sup> century teaching and learning.



## Making Learning Visible

**Learning Environment:** Transparency and sight lines break down the physical boundary of the spaces in the Learning Corridor, cultivating community and a sense of belonging. In areas where privacy and isolation are necessary, such as specialized classrooms and offices, ample glazing both on the exterior wall and into the central Learning Corridor maintains visual connections. The high level of visibility allows teachers to easily supervise students working independently in any of the project areas, and lets students see other students at work, promoting inquiry and observation and strengthening the connections among the school community.





## Sensory-Rich

**Physical Environment:** The use of bold, bright colors throughout the schools creates inviting, stimulating spaces for students. In the school's interior spaces, daylight from skylights and interior glazing often renders artificial light unnecessary. In addition to color, textures and patterns encourage creativity, exploration and reflection, while helping with wayfinding.

"The colors are very bright and fun, it's the opposite of boring."

*Student, Abbot-Downing  
Elementary School*





## Varied Environments

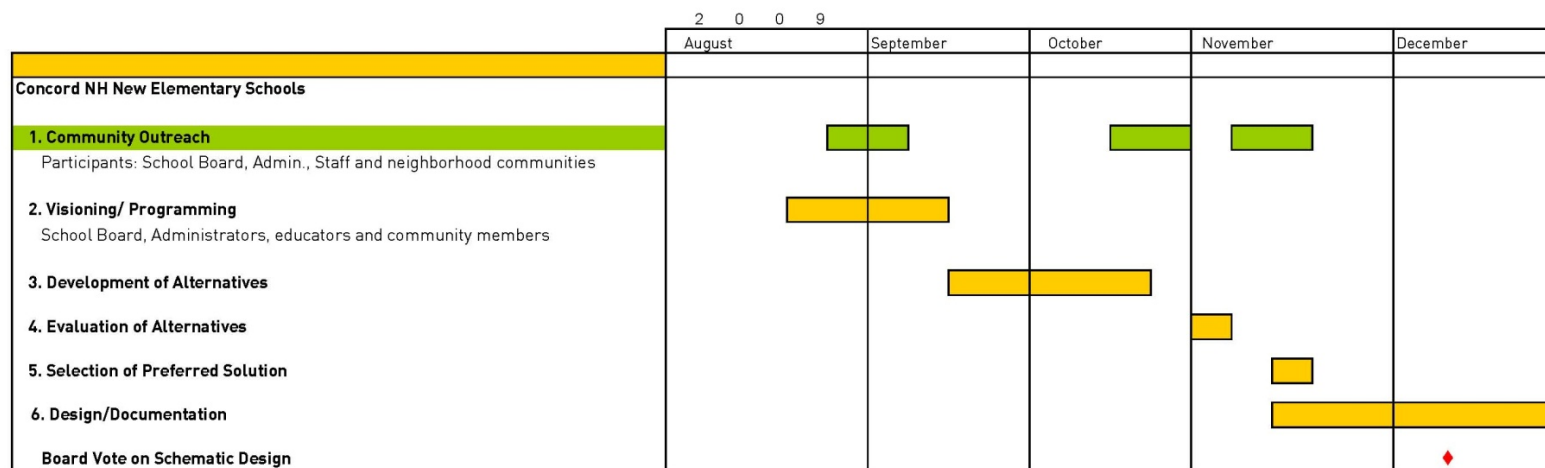
**Physical Environment:** Varied spaces in the Learning Corridor support physical health and engagement by providing opportunities for a range of activities. The design supports simultaneous activities with effective acoustics and daylighting so that a teacher may work one-on-one with a student while an adjacent inter-grade small group reads together. The flexible space, with media resources and wireless access throughout, allows easy access to information and permits a high level of interaction in which students can actively shape an environment conducive to their learning style.



# Community Vision

**Planning Process:** The design solution grew from discussions with the Superintendent, educators, the School Board, Administration and members of neighborhood communities. The visioning and programming process included:

- Meetings to define the educational goals
- Presentation of current concepts in education
- School tours with principals and visioning team
- Green integrated design meetings
- Faculty workshops
- Workshops to define instructional technology, security & site development
- Public forums

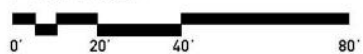




## Planning for Flexibility

**Planning Process:** In addition to visioning and planning sessions with educators and the community, the designers met with Inspectional Services and the Fire Department throughout the process to come up with a solution that provides clear easy egress while maintaining a flexible learning environment. This was accomplished by separating activity zones with low banks of lockers to delineate project areas from circulation.









- Classroom
- Learning Commons
- Shared Spaces
- Circulation
- Administrative
- Support
- Toilet

Christa McAuliffe School  
Concord, NH  
Second Floor



# Exhibition of School Planning and Architecture

## 2013 Project Data

Submitting Firm :	HMFH Architects, Inc.
Project Role	Architect
Project Contact	Laura Wernick
Title	Principal
Address	130 Bishop Allen Drive
City, State or Province, Country	Cambridge, MA
Phone	617 492 2200

Joint Partner Firm:	
Project Role	
Project Contact	
Title	
Address	
City, State or Province, Country	
Phone	

Other Firm:	
Project Role	
Project Contact	
Title	
Address	
City, State or Province, Country	
Phone	

Construction Firm:	
Project Role	
Project Contact	
Title	
Address	
City, State or Province, Country	
Phone	



# Exhibition of School Planning and Architecture

## 2013 Project Details

<b>Project Name</b>	Concord Elementary Schools
<b>City</b>	Concord
<b>State</b>	New Hampshire
<b>District Name</b>	Concord, NH School District
<b>Supt/President</b>	Christine Rath
<b>Occupancy Date</b>	9/1/2012
<b>Grades Housed</b>	Abbot Downing K-5; McAuliffe K-5; Mill Brook PK-2
<b>Capacity(Students)</b>	Abbot-Downing 484; McAuliffe 484; Mill Brook 476
<b>Site Size (acres)</b>	Abbot-Downing 8.7; McAuliffe 2.8; Mill Brook 35.7
<b>Gross Area (sq. ft.)</b>	Abbot-Downing 73,446; McAuliffe 71,485; MB 64,580
<b>Per Occupant(pupil)</b>	Abbot-Downing 152; McAuliffe 148; MB 136
<b>gross/net please indicate</b>	
<b>Design and Build?</b>	
<b>If yes, Total Cost:</b>	
<b>Includes:</b>	
<b>If no,</b>	
<b>Site Development:</b>	A-D 2,179,401; McAuliffe 2,072,861; MB 1,601,804
<b>Building Construction:</b>	A-D 12,237,410; McAuliffe 12,861,715; MB 11,406,696
<b>Fixed Equipment:</b>	A-D 300,000; McAuliffe 300,000; MB 240,000
<b>Other:</b>	A-D 600,000; McAuliffe 600,000; MB 480,000
<b>Total:</b>	all three schools \$44,879,887
















"This space offers a lot of opportunity for a whole range of convocations of gatherings of kids... it creates a very public kind of experience of learning where there is transparency everywhere, where there's a visible sense, a palpable sense, of the learning that's going on here."

*David Stephen  
Architect and Educational Programmer, New Vista Design*

"The teachers are just naturally meeting in the spaces that are between their classrooms. And that's exactly what we wanted to have happen; it become part of the culture of the school that we stop and talk or... plan to meet or sit down and figure something out together. And it's in a space that is conducive to that... that just invites that kind of collaboration."

*Christine Rath  
Superintendent, Concord NH School District*

"It appears to be a school for kids...it even looks like it."

*Student  
Abbot-Downing School*

"We have little break-out rooms [with] Eno boards here, too. So it's the same set-up that we would have in the classroom but it gives that much more flexibility."

*Matt Cashman  
Director of Facilities and Planning,  
Concord Schools*