

2013 Exhibition of School Planning and Architecture

Columbus North High School and
Columbus East High School
Renovations and Additions

Columbus, Indiana

Columbus North High School and Columbus East High School

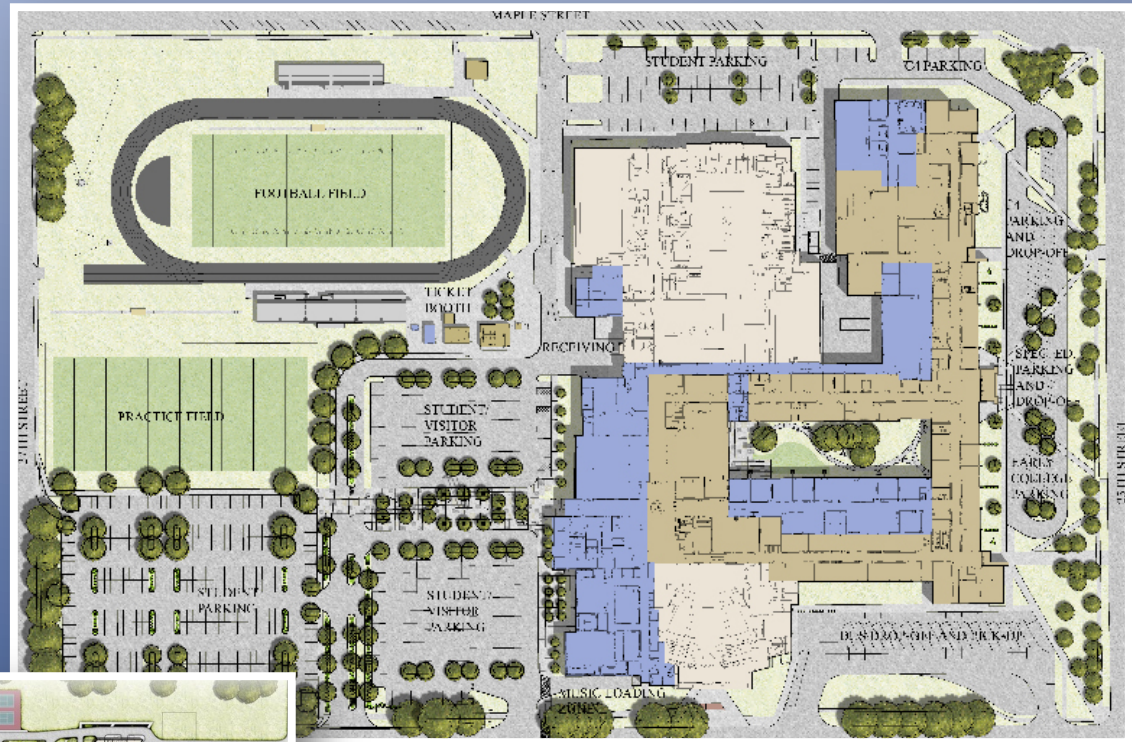


Columbus North High School

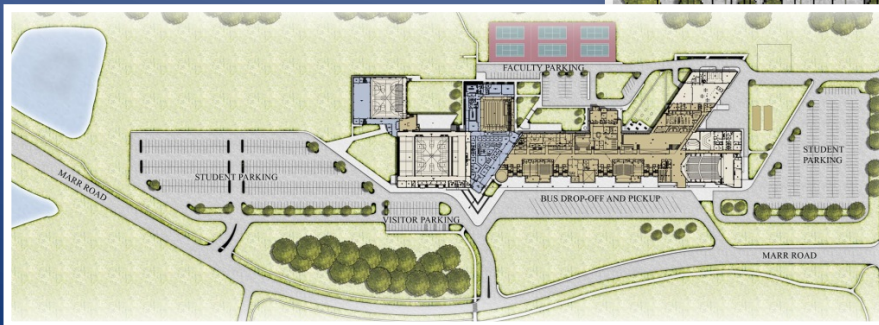


Columbus East High School

Columbus North High School and Columbus East High School



Columbus North High School



Columbus East High School

Community Environment:

The District has two comprehensive high schools within its boundaries and both were in need of remodeling to accommodate increased enrollment as well as address the needs for 21st Century Learning. It was critical to ensure that the community was in support of moving forward with projects at both schools to ensure that a bond referendum would be successful.

The District asked the firm to design and conduct a community outreach process in order to gain consensus in the community regarding the long term goals for the district. The process also involved the firm providing clear direction as to what would be required, in terms of changes to both of the high school facilities, in order to meet those goals.

The community outreach process, as designed and led by the firm, resulted in the successful passage of an \$89 million referendum to fund the expansion and renovation of both East and North High Schools.

As a part of the community process, all school and community facility resources were identified and opportunities to share facilities rather than replicate them were important to the process.



North Main Entry/Student Gathering Space



Community Input Workshop



Project Lead The Way Lab

Community Environment: *Continued*

The firm led a group of approximately 50 teachers, students, administrators, parents and community leaders through a 9 month process that focused on:

- common understanding of the facility needs for current high schools vs. high schools of the future
- thorough assessment of existing conditions
- community interest in utilizing all available facilities to achieve the educational purpose of the high schools
- community access to school facilities
- impact of curriculum on facilities

The resulting designs reflect the unique attributes of each building as intended by the original architect and by the culture of each building. In addition, the community prides itself on having two large comprehensive high schools each with its own distinct attributes. One follows a more traditional high school teaching and learning delivery system while the other follows a much more flexible model, with greater autonomy for students. Since there is open enrollment in the district, students and parents can choose which environment is best suited to their needs.



East Integrated Social Studies/Language Arts Room



North Choir Room



East Athletic Entrance

Learning Environment:

The community process developed a Vision that identified the following priorities:

- Create flexible facilities with integrated technology that meet current and future needs for teaching and learning
- Create space with the safety of all users in a modern public school environment in mind
- Acknowledge and embrace the diversity that exists between the schools
- Establish fair, efficient and successful art and athletic programs at each high school
- Promote curricular integration and authentic learning at and between both schools
- Evaluate and apply the best practices of sustainable design in all project phases
- Promote cooperative planning and teamwork among faculty and staff
- Facilitate partnerships with universities, community organizations and businesses
- Provide more learning alternatives for members of the community
- Create facilities that support both school and community activities



Resource Area built in former Courtyard Space



Computer Lab



Automotive Technology Lab

Learning Environment: *Continued*

It was important to keep this vision as the guide for the direction of the projects. Critical to the creation of flexible facilities was the creation of a variety of learning spaces.

In each building, the goal was to develop spaces that could adapt to the need for large group, individual classroom, practical lab and small group instruction. Providing adequate informal learning spaces for both group and individual study was also important to achieve the vision set by the community.

The district is working to incorporate one-to-one technology, so the design incorporated substantial and ubiquitous technology infrastructure. The use of flexible classroom furniture provides the ability to reconfigure classrooms to respond to a variety of teaching and learning styles.

The buildings are able to adapt from teacher led, learner passive environments to learner active, teacher facilitated environments. It is critical that the physical environment is able to respond to the need for active student learning while acknowledging that some types of traditional teacher led learning will still take place within the building.



East Science Lab



East Student Resource Area



East Conference Room/Classroom/Presentation Room

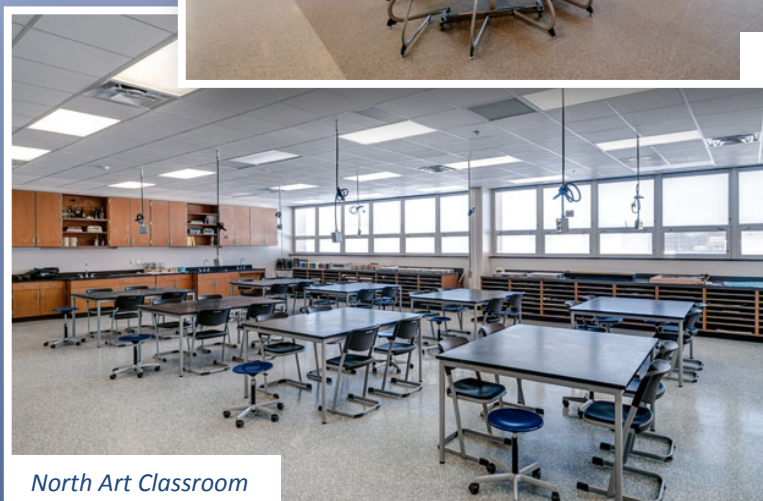
Physical Environment:

North was opened in the 1950's as the single high school in the city. Although there were several additions to the school, its footprint was virtually unchanged until this project.

As a part of the 125,000 square feet of new construction, the front door of the school was relocated to the north end of the complex and provides a secure and identifiable entry to the building with adjacent visitor parking. Administrative offices, cafeteria and kitchen, music and performing arts classrooms, media center, automotive laboratory, student resource areas and teacher resource areas were also part of the new construction. All remaining academic classrooms were renovated to include new lighting, technology and more efficient mechanical systems. The new construction was designed to LEED standards. This project has created a much more open, flexible academic space for learning.



North Cafeteria



North Art Classroom



North Media Center

Physical Environment: *Continued*

Columbus East High School was designed in 1970 as a high school whose curriculum was delivered through a large seminar, small group study process.

Over the years, the school moved to a more traditional schedule, but retained the culture of openness and flexibility. The current renovation includes a remodeling of the second floor classrooms, labs and large student resource areas.

A new administrative wing was designed to create a new “front door” for the school and to provide a secure entry. All of the buildings were connected through this addition. The swimming pool was completely renovated and wrestling and weight rooms were added to the athletic complex. An upgraded mechanical system allows improved zoning and year round heating and cooling. All of the materials and systems used in the project were examined for both efficiency and appropriateness to respect the original design of the building.

All of the additions are seamless enhancements to the original 1970 building. The open, daylight filled areas provide an uplifting educational environment on all floors of the building.



East Student Resource Area



East Teacher Workspaces



East Entry Hallway

Planning Process:

In the Spring of 2005, a group of school and community leaders gathered to begin a process that examined the future of education and educational facilities, the current status of the two high school facilities, and the appropriate path forward that created the necessary educational environment for students in the community. Participants included the following:

- 14 members of the community
- 4 school board members
- 7 parents with representatives from each school
- 18 representatives of the school district that included administration, staff and teachers
- 2 students
- 2 educational programmers from the design team



Community Input Workshop



Community Input Workshop



Student Resource Area

Planning Process: *Continued*

In January of 2006, the committee unanimously endorsed an \$89 million renovation and addition project for both high schools and the school board approved moving forward with a conceptual design that would hold true to the vision and priorities developed by the community group.

With that approval, design teams were set up at each of the high schools that included school district administration, school administration, school faculty and staff and design professionals.

Throughout the 2006-2007 school year, the teams worked together to develop the most efficient and effective conceptual designs for each high school. The concepts were shared with the initial community group, parents and staff from each individual high school and were then presented to the School Board for approval. The School Board voted to move ahead with a referendum for the \$89 million project on the November, 2008 ballot. The referendum was passed with 68 % of the voting in favor of the projects.

Construction on both projects began in December of 2009.

The projects were completed in the Fall of 2012.



North Main Entrance



East Media Center



East Lecture Hall

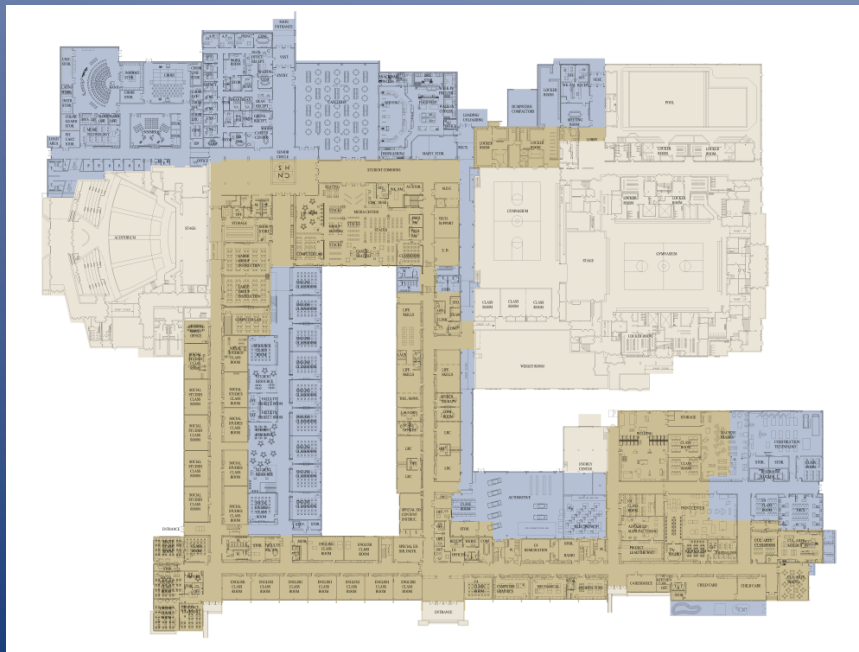
North Floor Plan

New
Construction

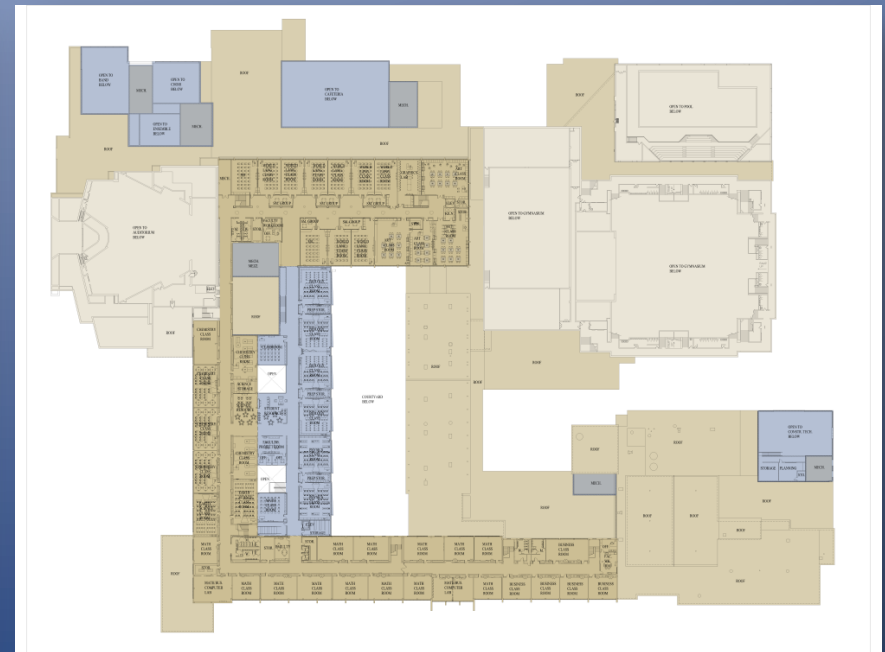
Renovation

No Work
(future phase)

Color legend



First Floor



Second Floor

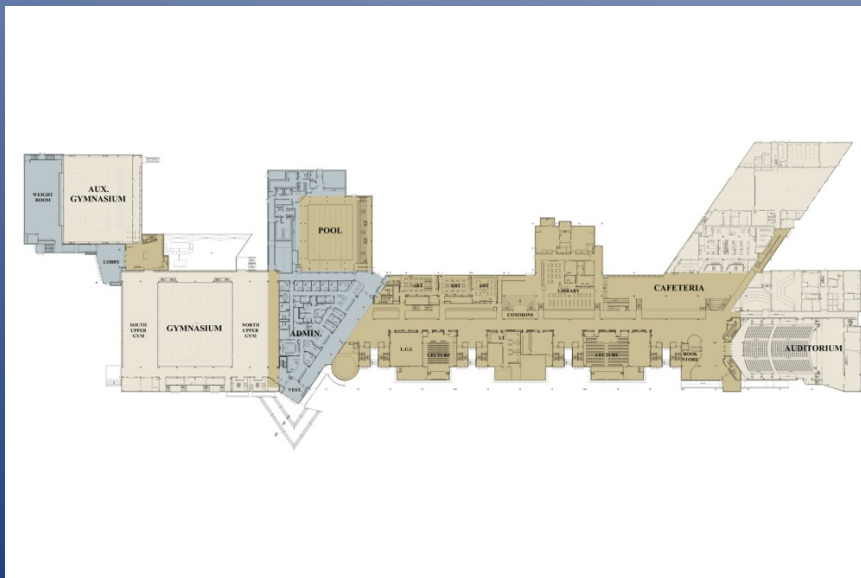
East Floor Plan

New
Construction

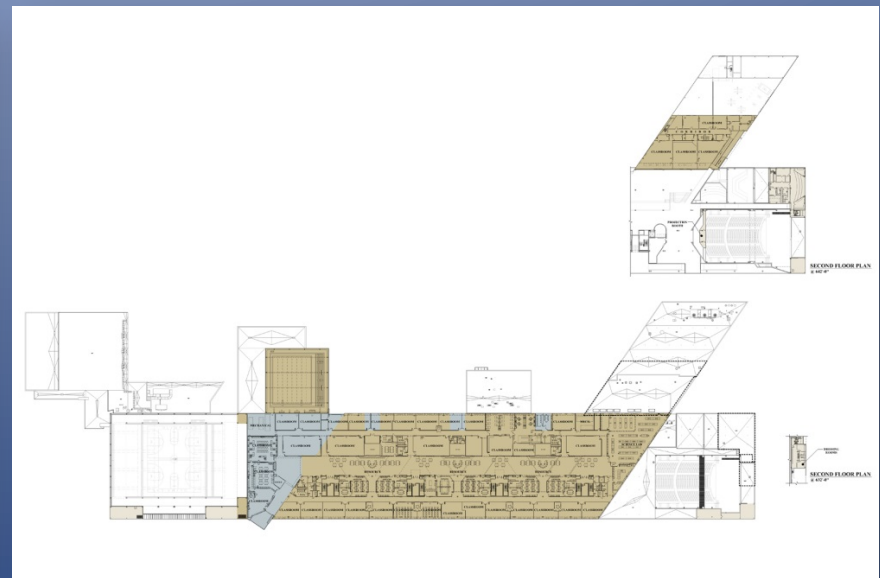
Renovation

No Work
(future phase)

Color legend



First Floor



Second Floor

Exhibition of School Planning and Architecture

Project Data

Project Name	Columbus North High School	Columbus East High School
Submitting Firm :	CSO Architects	CSO Architects
Project Role	Architecture, Interior Design, Master Planning, Programming	Architecture, Interior Design, Furniture Procurement
Project Contact	John Rigsbee	John Rigsbee
Title	Principal	Principal
Address	8831 Keystone Crossing	8831 Keystone Crossing
City, State	Indianapolis, IN 46240	Indianapolis, IN 46240
Phone	317-848-7800	317-848-7800
Joint Partner Firm:		
Project Role	n/a	n/a
Project Contact	--	--
Title	--	--
Address	--	--
City, State	--	--
Phone	--	--
Other Firm:		
Project Role	n/a	n/a
Project Contact	--	--
Title	--	--
Address	--	--
City, State	--	--
Phone	--	--
Construction Firm:		
Project Role	Bruns-Gutzwiller, Inc. (General Contractor)	Shiel Sexton (General Contractor)
Project Contact	Tom Bruns	Joe Shanahan
Title	Owner	Project Manager
Address	305 S John St	902 North Capital
City, State	Batesville, IN 47006	Indianapolis, Indiana 46204
Phone	812-934-2105	317-423-6300

Exhibition of School Planning and Architecture

Project Details

Project Name	Columbus North High School	Columbus East High School
City	Columbus	Columbus
State	Indiana	Indiana
District Name	Bartholomew Consolidated School Corporation	Bartholomew Consolidated School Corporation
Supt/President	Dr. John Quick	Dr. John Quick
Occupancy Date	Fall 2012	Fall 2012
Grades Housed	9-12	9-12
Capacity(Students)	1,600	1,559
Site Size (acres)	28.26	15.70
Gross Area (sq. ft.)	534,930	483,028
Per Occupant(pupil)	334 sq. ft.	310 sq. ft.
gross/net please indicate	--	--
Design and Build?	Design/Bid/Build, Multiple Prime Contractors	Design/Bid/Build, Multiple Prime Contractors
If yes, Total Cost:	Final construction cost \$38,831,737 (Hard cost only)	Final construction cost \$28,511,565 (hard cost only)
Includes:	Site, Building, Fixed Equipment	Site, Building, Fixed Equipment
If no,	n/a	n/a
Site Development:	--	--
Building Construction:	--	--
Fixed Equipment:	--	--
Other:	--	--
Total:	Final construction cost \$38,831,737 (Hard cost only)	Final construction cost \$28,511,565 (hard cost only)

Additional Information



The best way to sum up the overall effect of this process and its resulting projects is to simply quote the article from the local newspaper, [The Republic](#), August 6, 2012 edition.

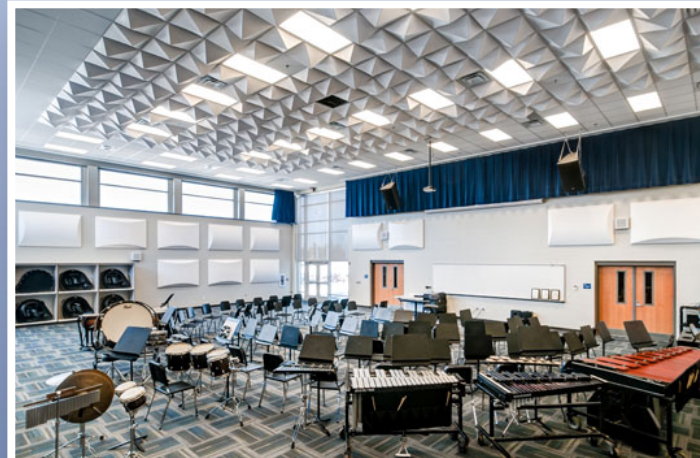
“ These much-needed renovations at the city’s two high schools were fully embraced by the community in a referendum issue on an election ballot. Just from a practical perspective, these improvements were long overdue. The Columbus North building, which was first used in the mid-1950s, still had some of its original infrastructure more than a half century later. The same held true at Columbus East. Although the building first went into use 40 years ago, it, too, had many of the same characteristics it did in 1972. But aging elements were only part of the demand for change. The East building also had some major imperfections that hadn’t been addressed until now. Equally important as these infrastructure elements are the improvements that brought both schools into the 21st century. They now are more adaptable to changes in teaching and technology. Students and teachers are in brighter environments that are much more conducive to the missions of each group. **While the education of children must always be seen as the main fruit that can be harvested from these renovations, the benefits actually spread out into the community. “**



Before and After



Before – Band Room



After – Band Room



Before – Lecture Hall



After – Lecture Hall

Before and After



Before – Old Main Entrance on
South Side of Building



After – New Main Entrance on
North Side of Building



Before – Library



After – Media Center

Before and After



Before – Art Room



After – Art Room



Before – Science Lab

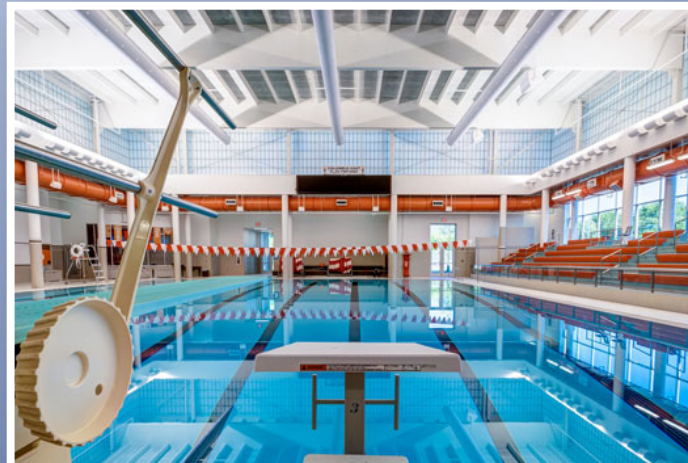


After – Science Lab

Before and After



Before – Pool



After – Pool



Before – Cafeteria



After – Cafeteria